

Flight Scientist Report
Thursday 02/27/2020 ACTIVATE RF09

Flight Type: Statistical Survey Flight - Clouds

Flight Route: ATLIC – ZIBUT - to the south

Special Notes: ATC issues changed flight plan to go south from ZIBUT rather than north

King Air

- 12:06 takeoff (10 mins after Falcon to adjust for the faster speed aloft for King Air vs Falcon)

Instruments:

Fine

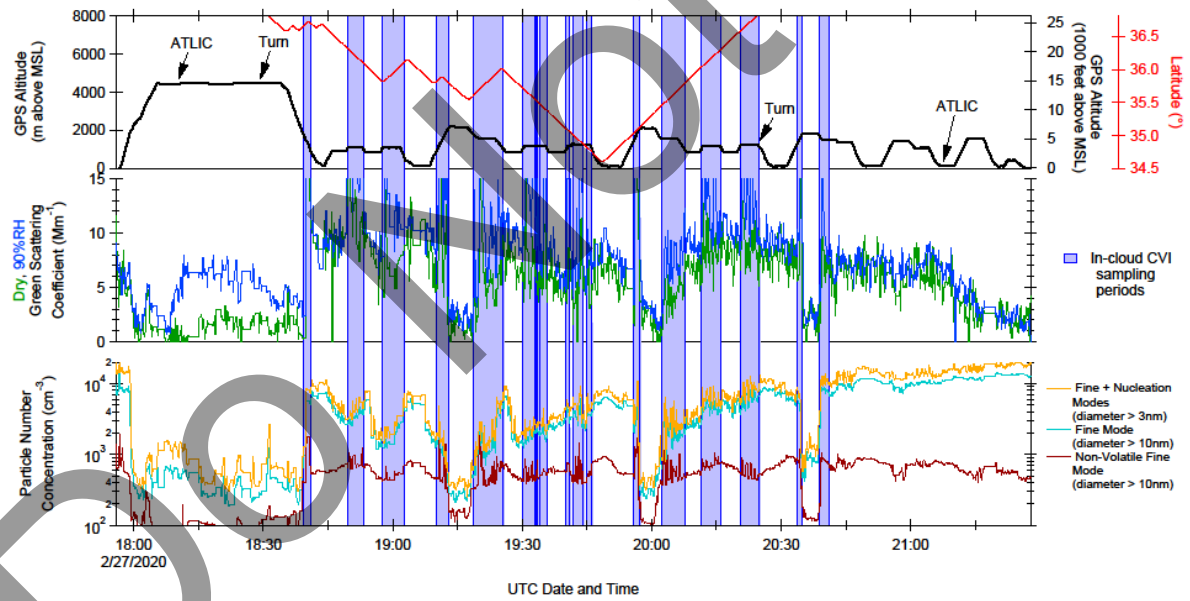
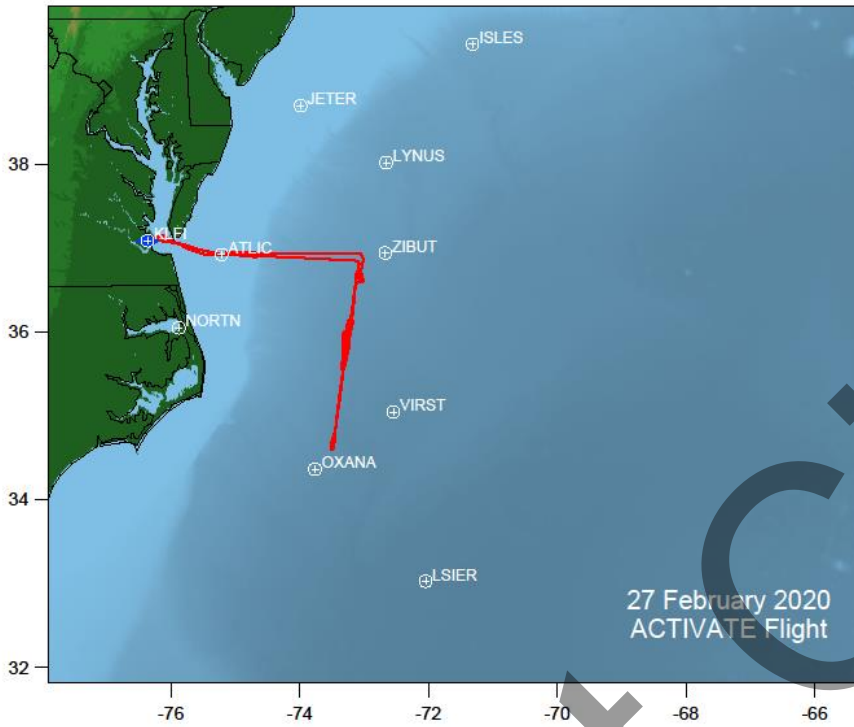
Falcon

- 11:56 takeoff
- ATC issues kept Falcon high (15K ft) a bit longer than planned; did spiral down after the ATC issues ended
- Decided to change plans and go south to do statistical surveys and did a number of racetracks to improve co-location with UC-12
- Noted to be a fairly straightforward day for ensembles

Instruments:

Fine

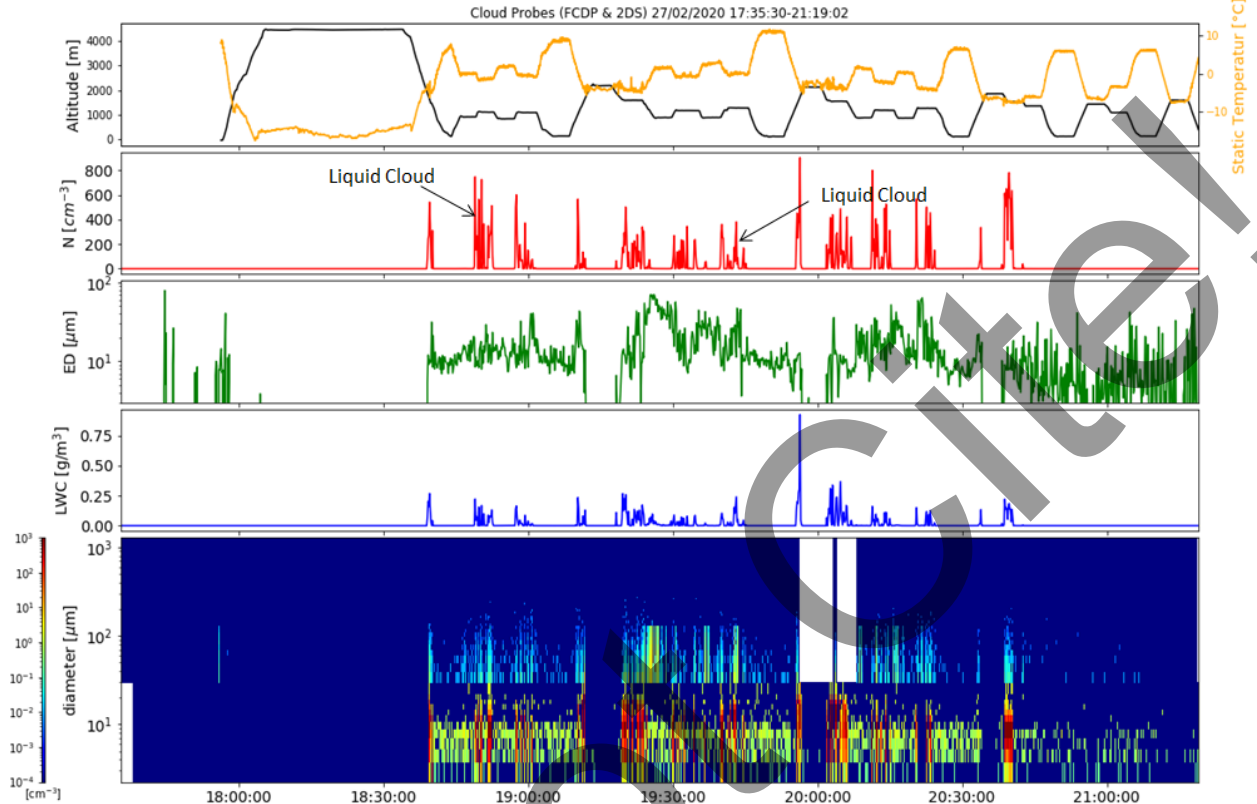
Rich Moore Quicklook Images:



Quicklook ACTIVATE Cloud Probes (FCDP & 2DS)

preliminary data, only for quicklook use

Simon Kirschler, Christiane Voigt, Richard Moore, Ewan Crosbie



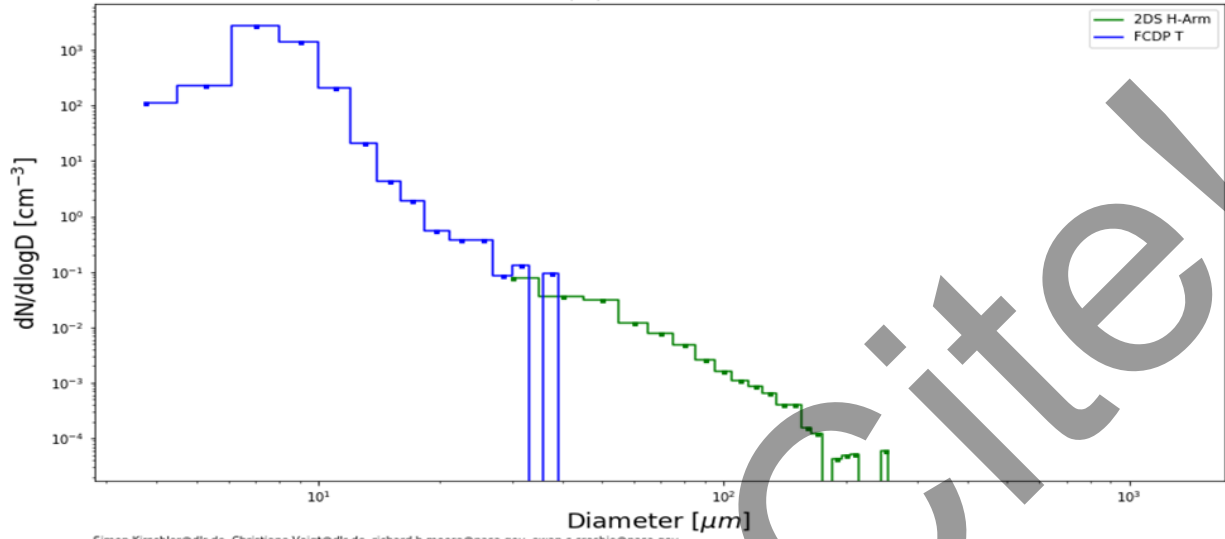
Simon.Kirschler@dlr.de, Christiane.Voigt@dlr.de, richard.h.moore@nasa.gov, ewan.c.crosbie@nasa.gov

PSD ACTIVATE

preliminary data, only for quicklook use
Simon Kirschler, Christiane Voigt, Richard Moore, Ewan Crosbie

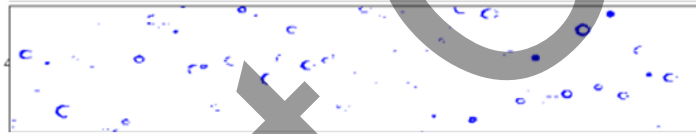


PSD 27/02/2020 20:38:50-20:40:30

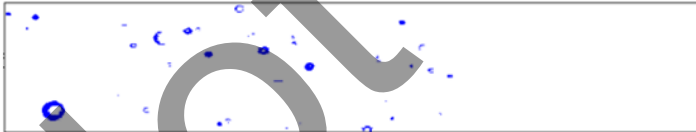


Simon.Kirschler@dlr.de, Christiane.Voigt@dlr.de, richard.h.moore@nasa.gov, ewan.c.crosbie@nasa.gov

Liquid Cloud: 18:52:24



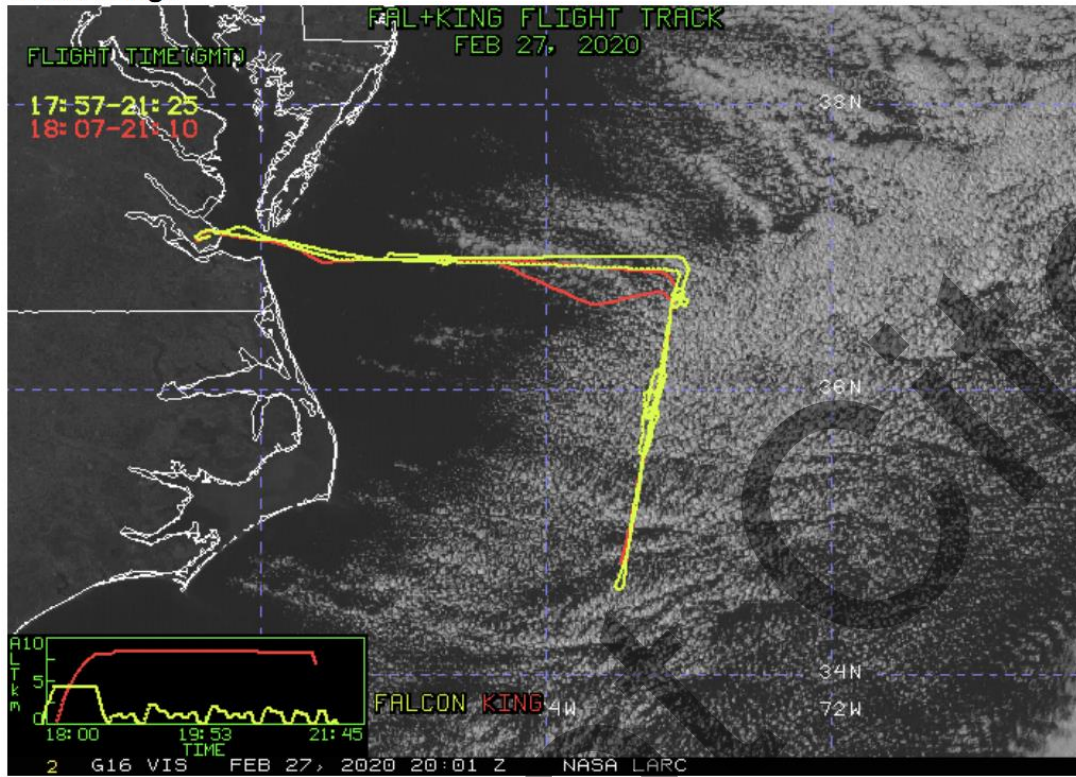
Liquid Cloud: 19:40:15



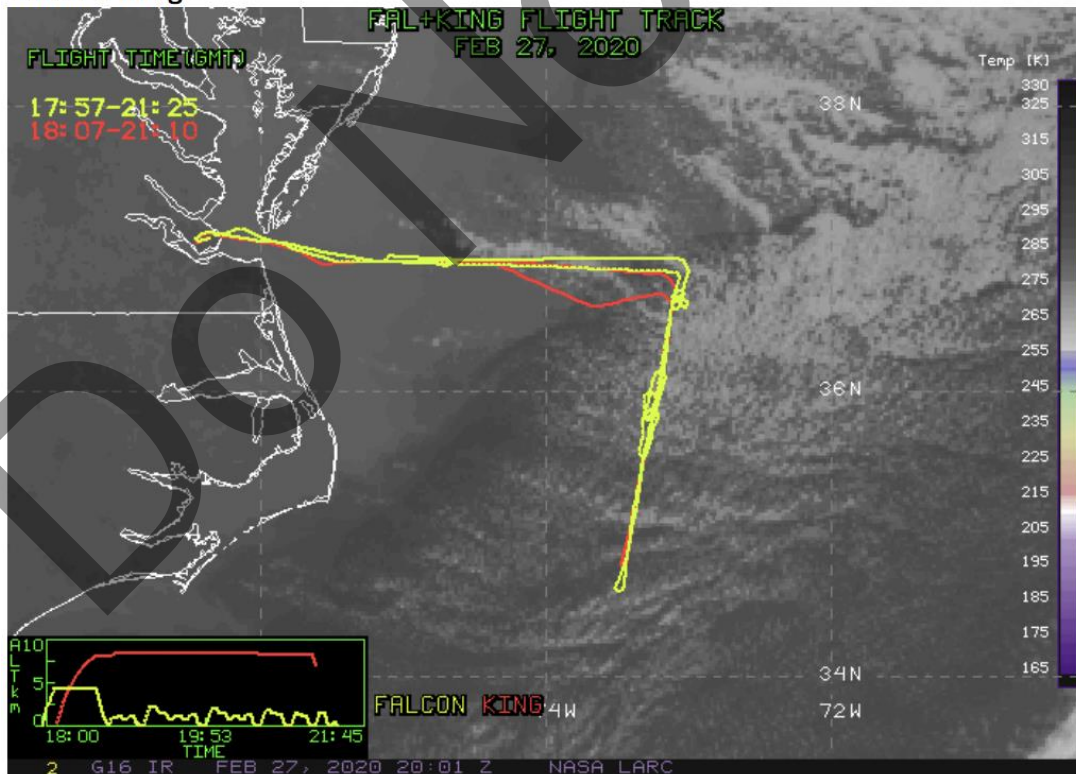
Do Not Cite!

NASA LaRC Clouds Group GOES-16 Quicklook Images for Flight 9, 20:01 UTC Feb 27, 2020 (near middle of flight)

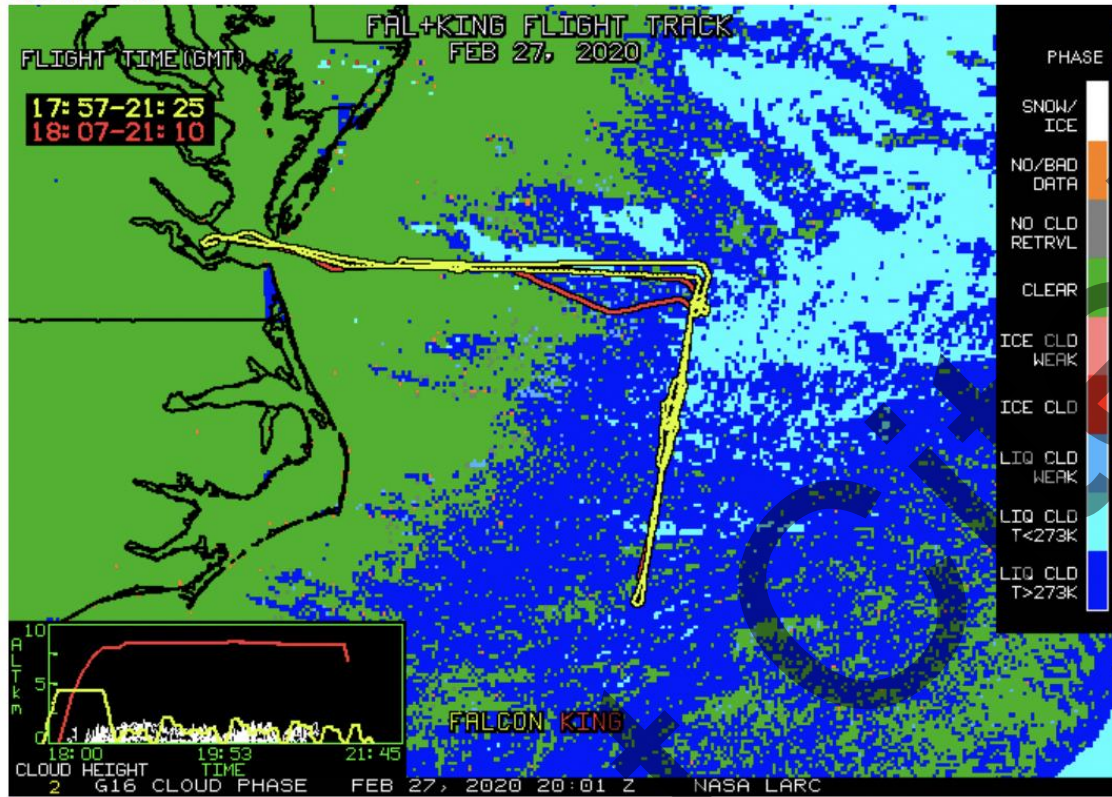
Visible Image



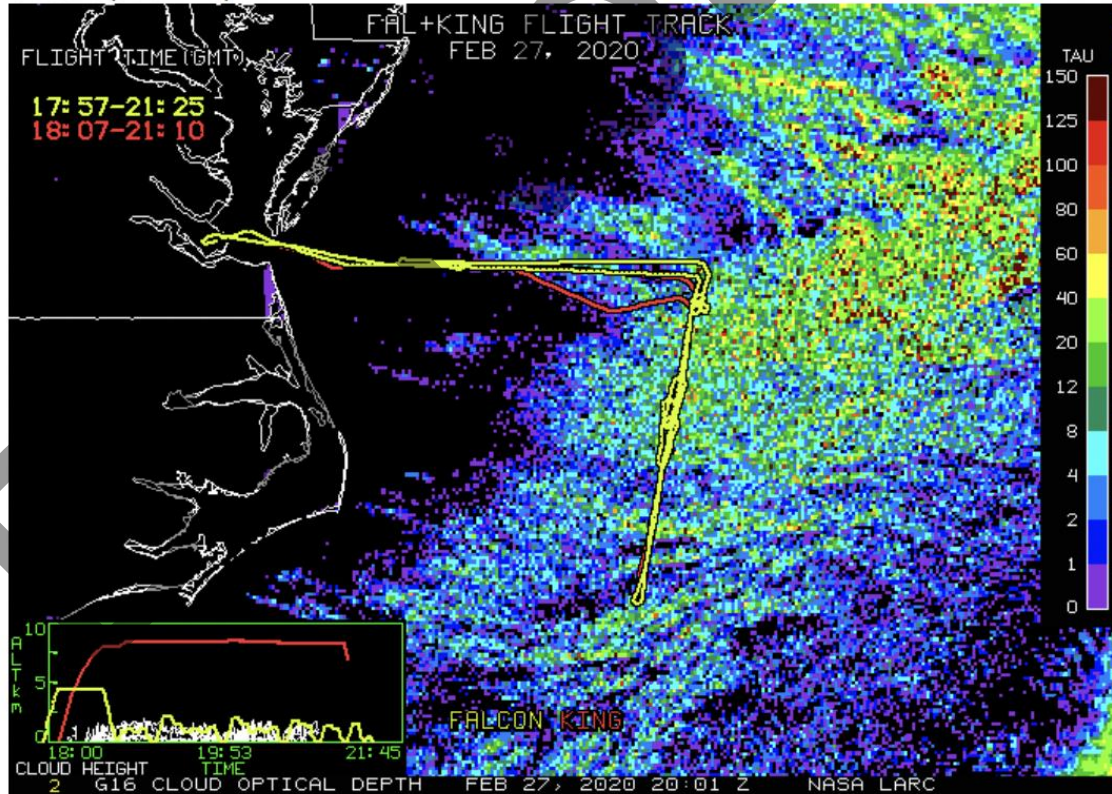
Infrared Image



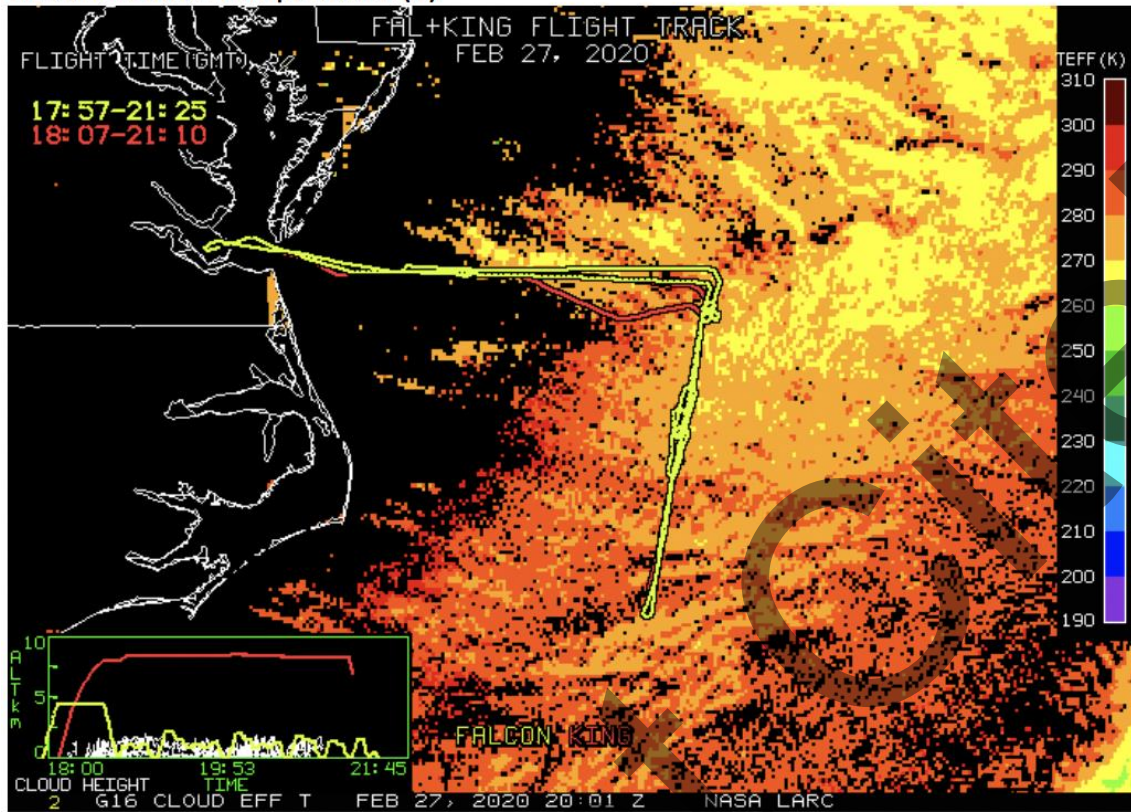
Cloud Phase



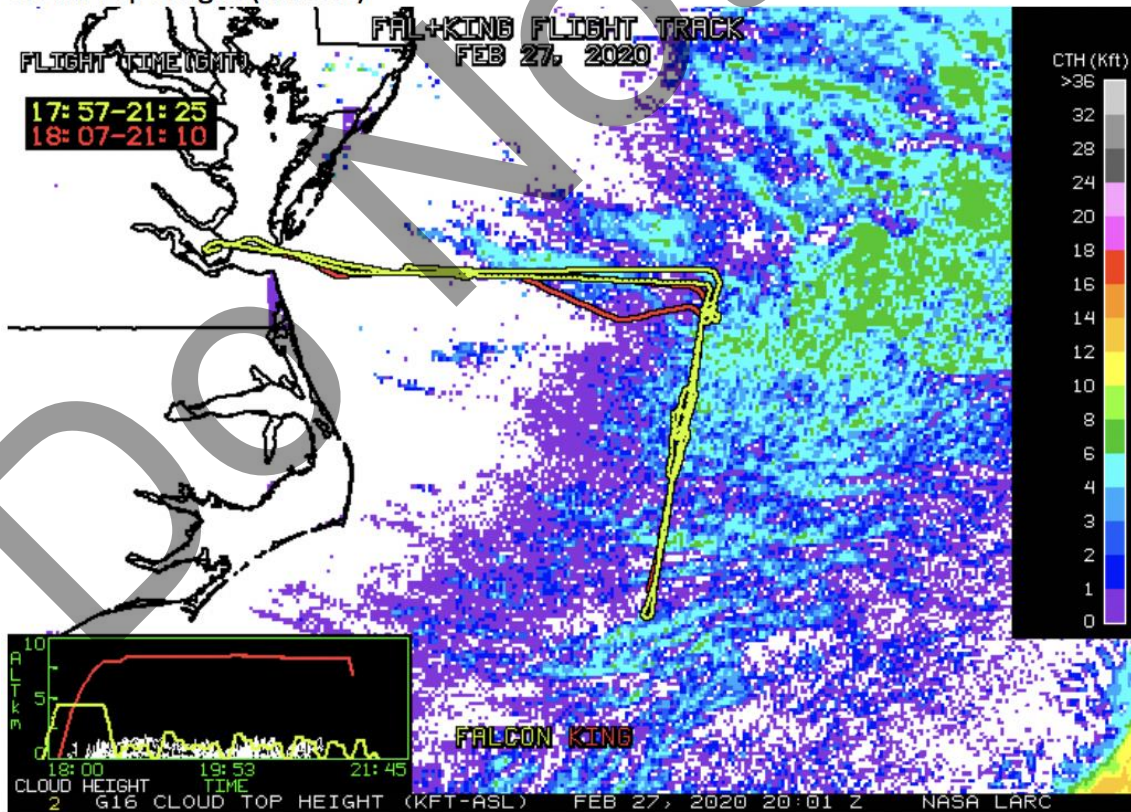
Cloud Optical Depth



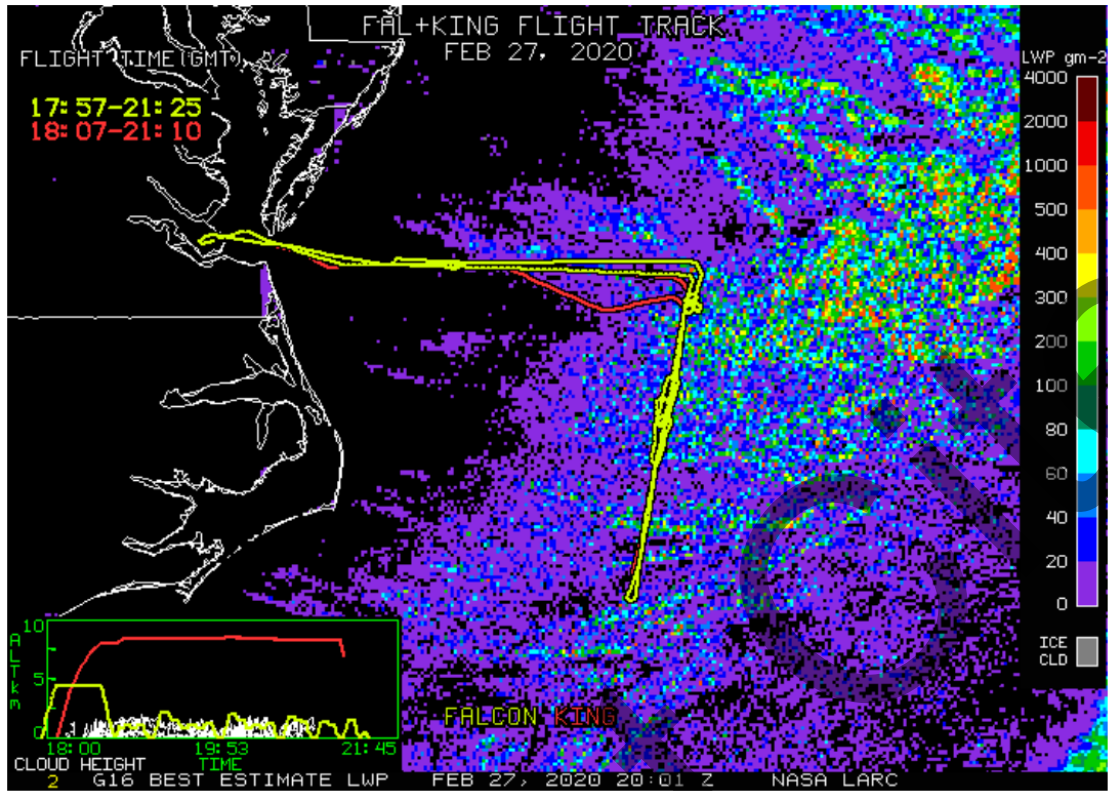
Cloud Effective Temperature (K)



Cloud-Top Height (Kft-ASL)



Cloud Liquid Water Path (gm-2)



Cloud Droplet Number Concentration (cm-3)

