

Flight Scientist Report  
Friday 02/28/2020 ACTIVATE RF11

Flight Type: Statistical Survey Flight – Clouds

Flight Route: OXANA – centerpoint of first flight's circle, and downwind from there

Special Notes: This was the 2<sup>nd</sup> flight after a Process Study Flight based at OXANA

### **King Air**

- Nothing noted to especially out of the ordinary

Instruments:

Fine

### **Falcon**

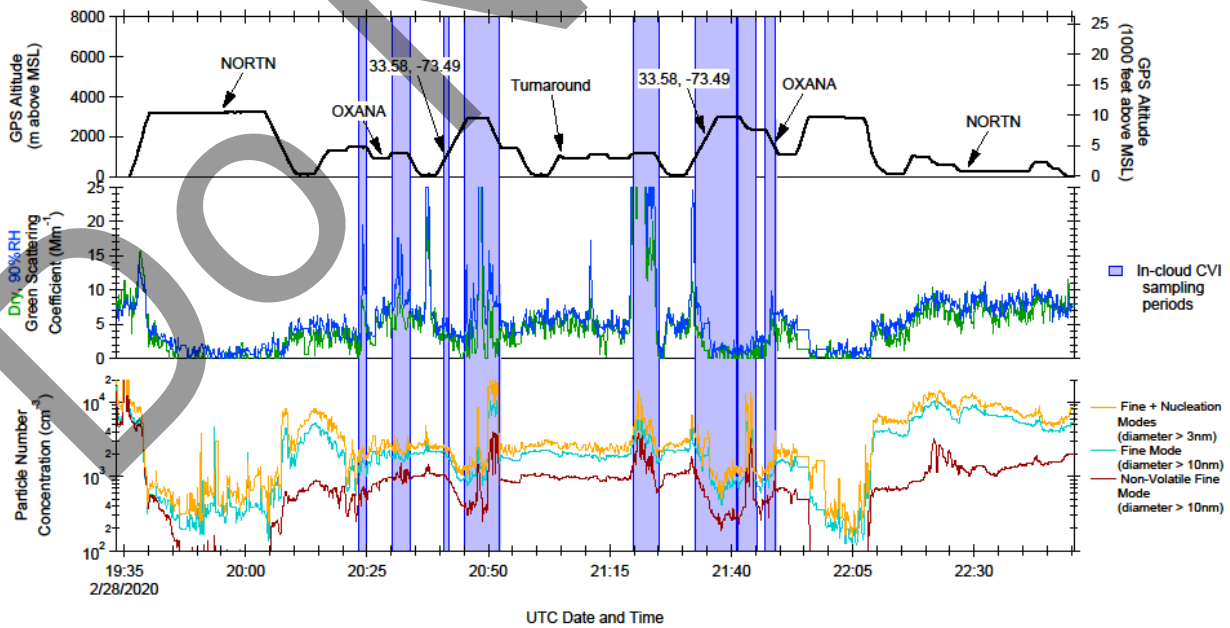
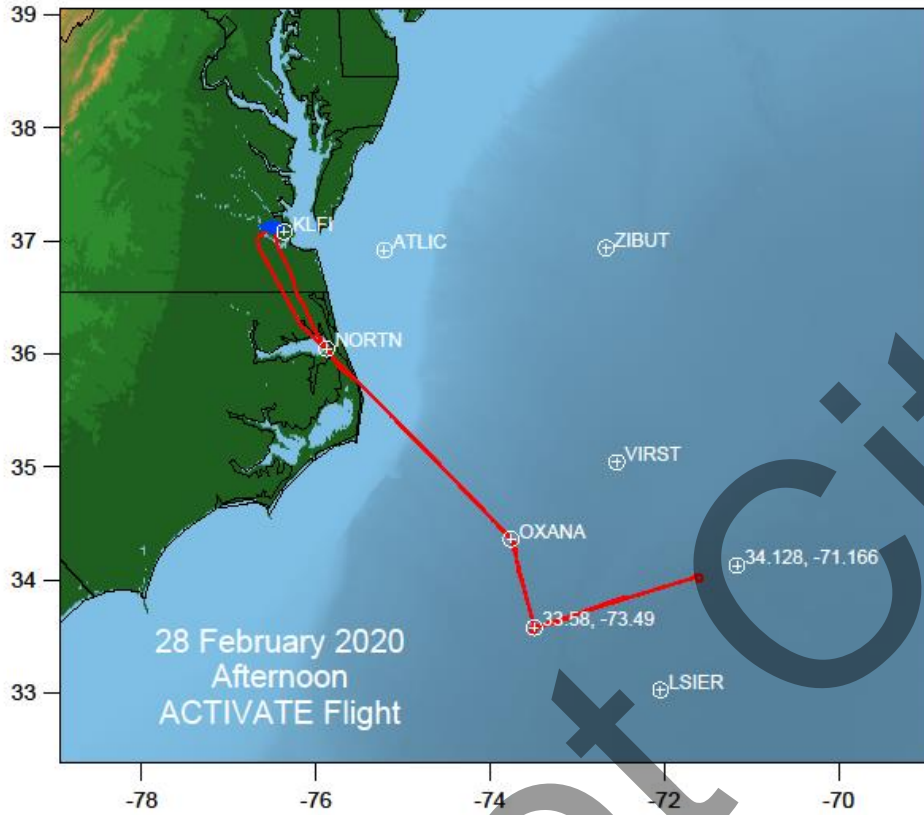
- Some instances of noticeable rain from clouds
- 2 cloudy statistical surveys and one clear survey near end of flight

Instruments:

Still issues with forward camera

Do Not Cite!

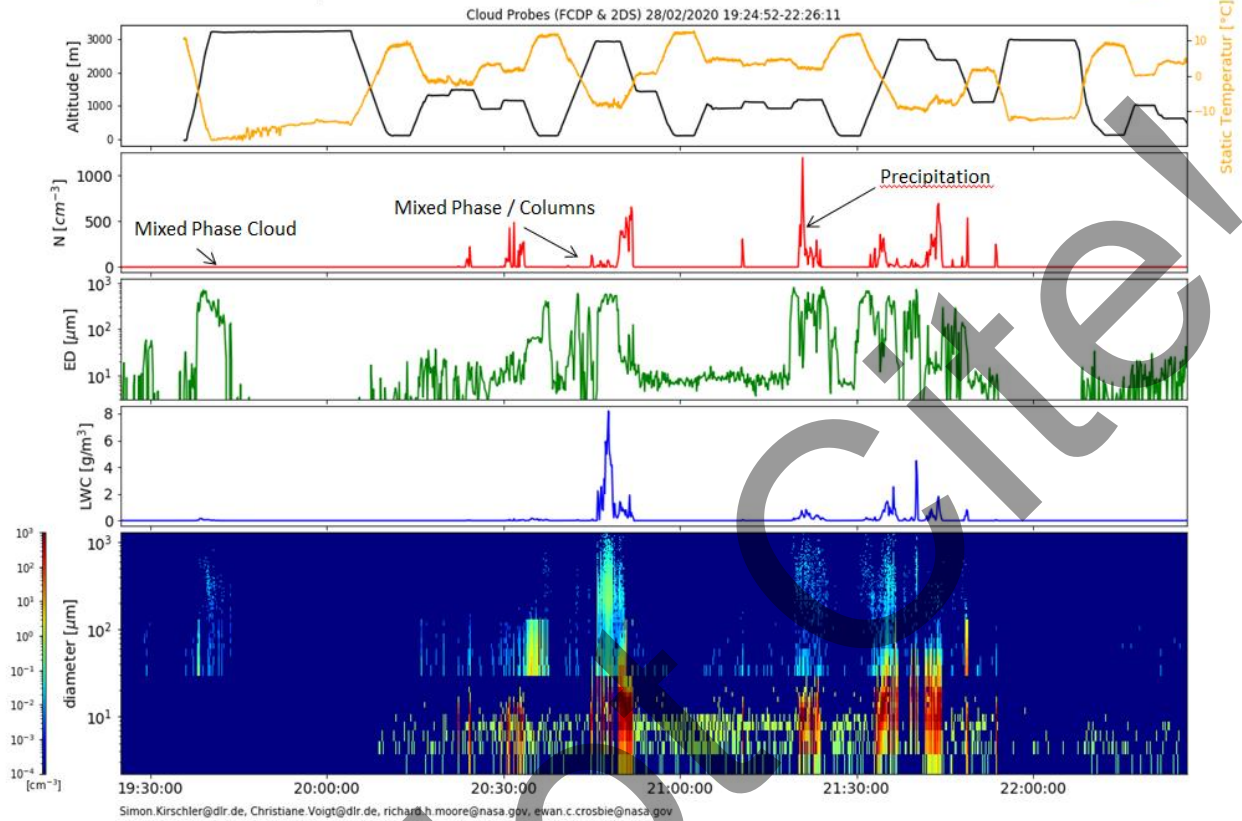
Rich Moore Quicklook Images:



# Quicklook ACTIVATE Cloud Probes (FCDP & 2DS)

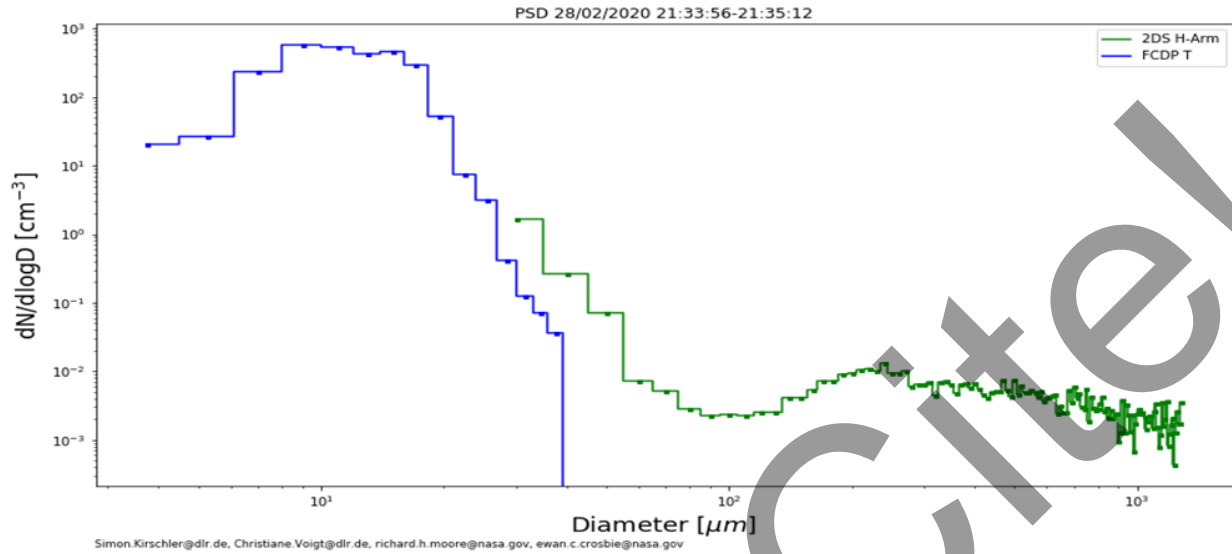
preliminary data, only for quicklook use

Simon Kirschler, Christiane Voigt, Richard Moore, Ewan Crosbie



# PSD ACTIVATE

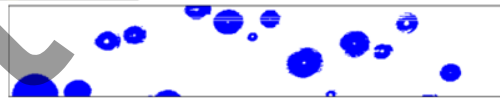
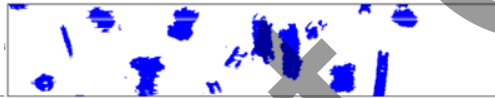
preliminary data, only for quicklook use  
Simon Kirschler, Christiane Voigt, Richard Moore, Ewan Crosbie



Mixed Phase / Columns: 20:42:42

Mixed Phase Cloud: 19:39:55

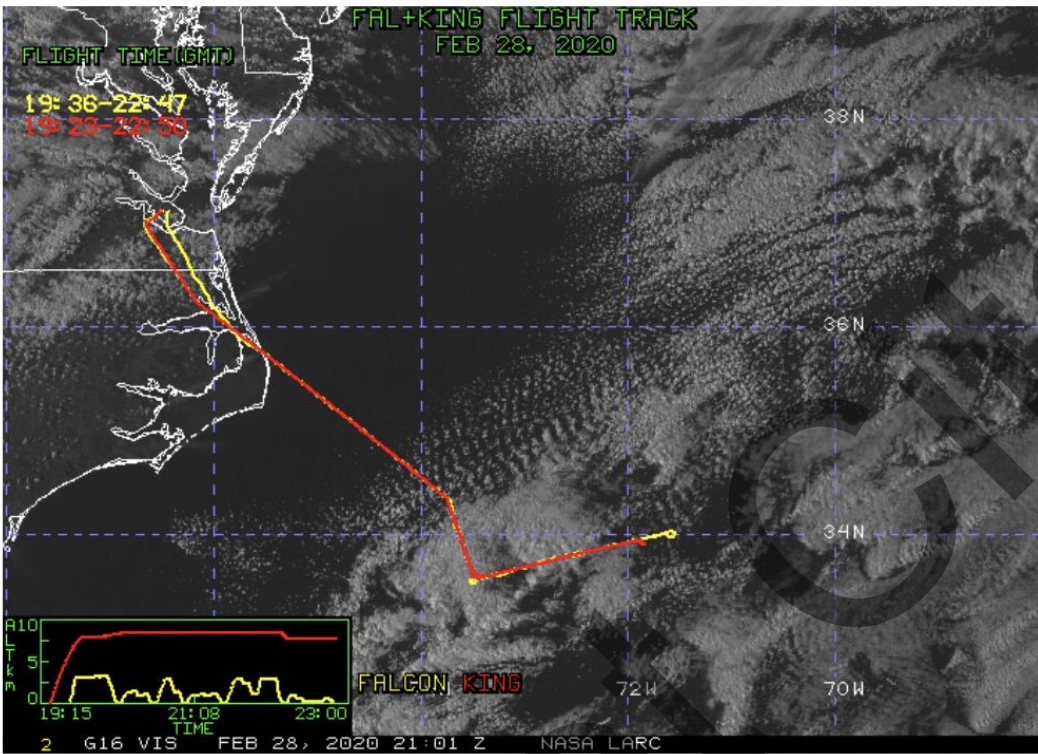
Precipitation: 21:20:13



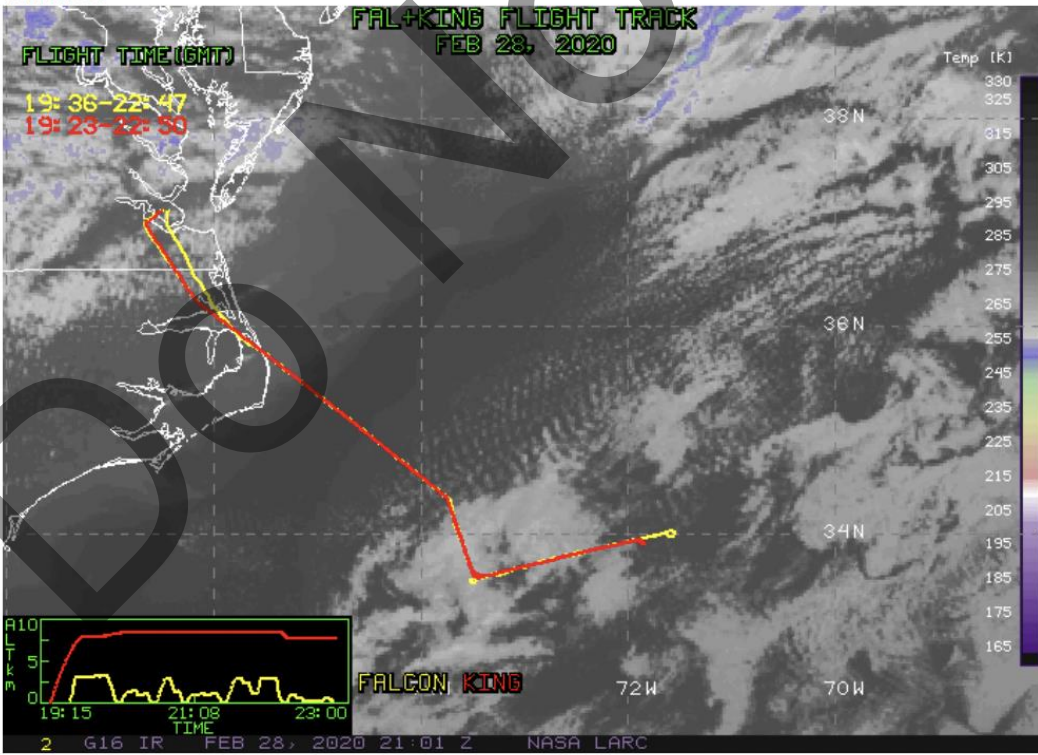
Do Not Cite!

NASA-LaRC Clouds Group GOES-16 Quicklook Images for Flight 11, 21:01 UTC Feb 28, 2020  
(near middle of flight)

Visible

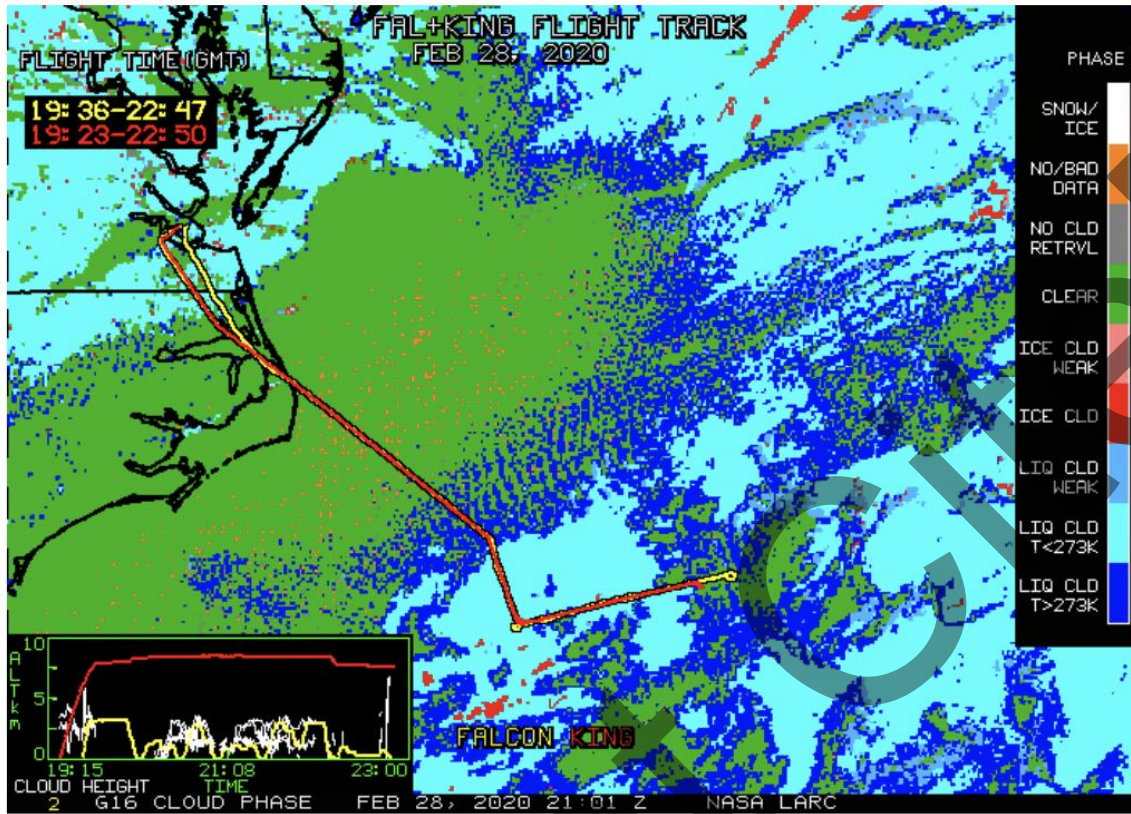


Infrared

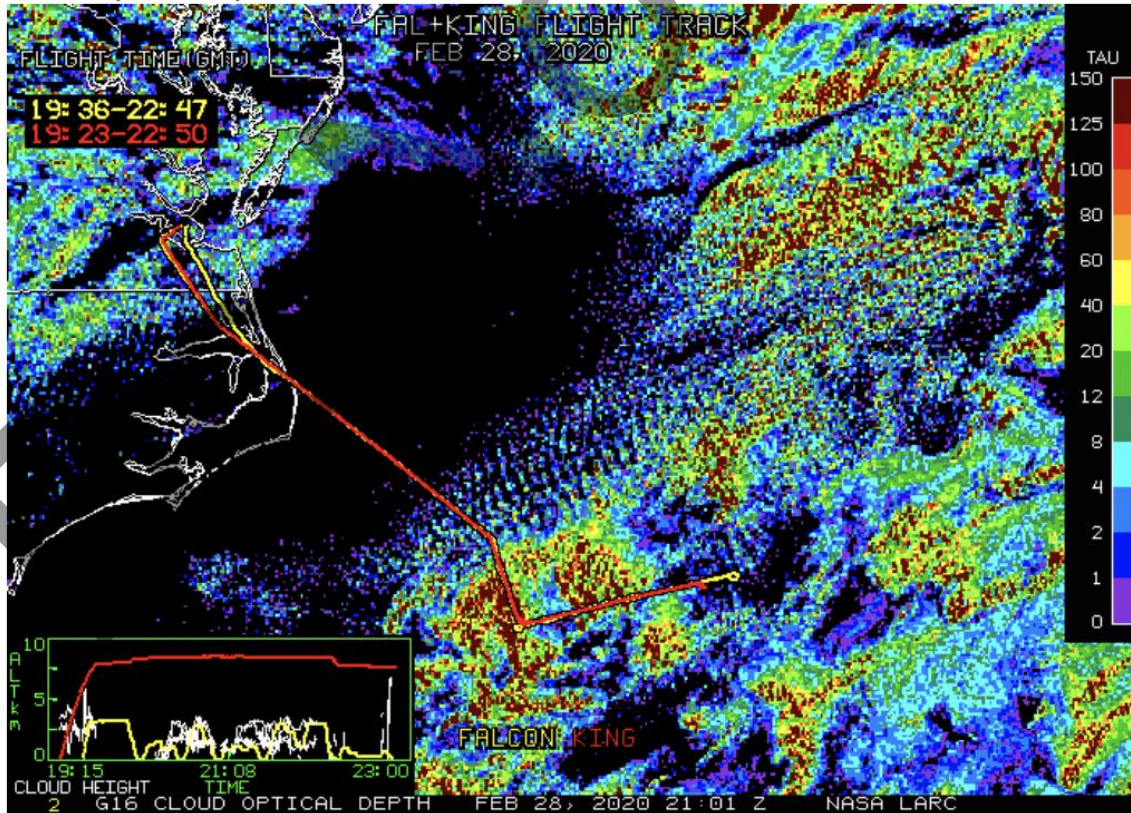




Cloud Phase

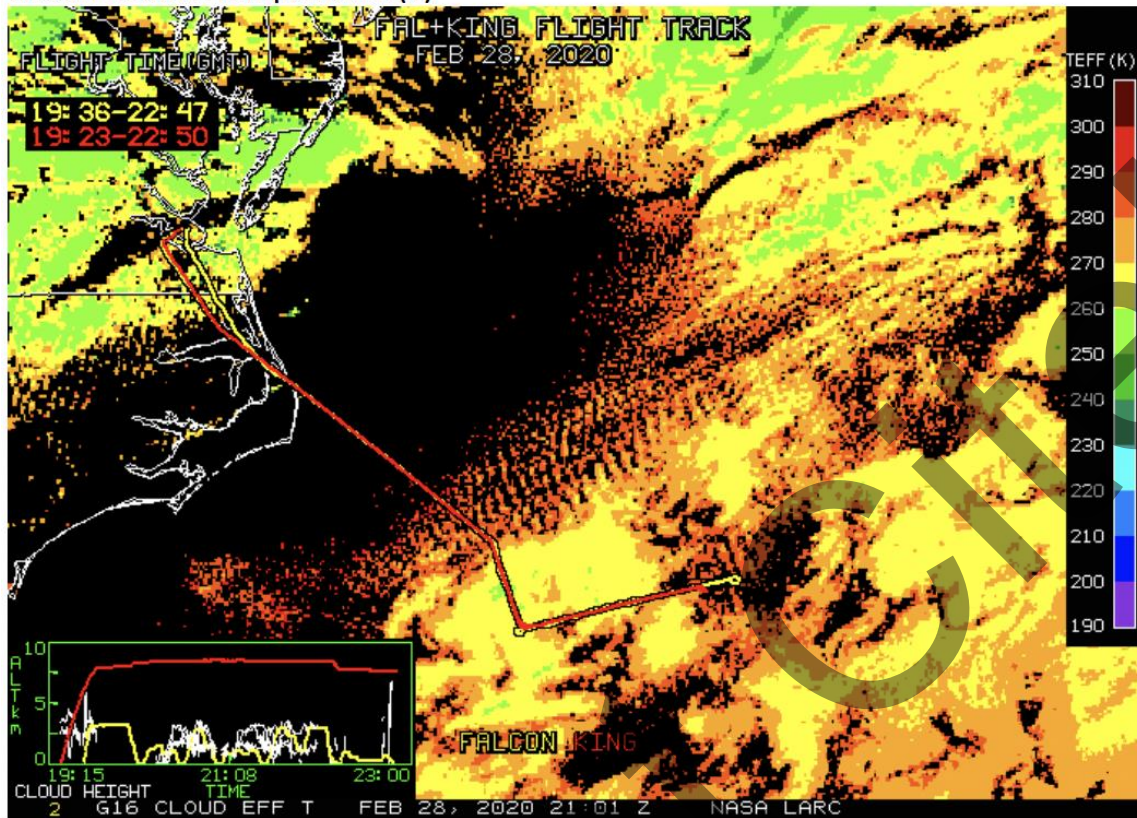


Cloud Optical Depth

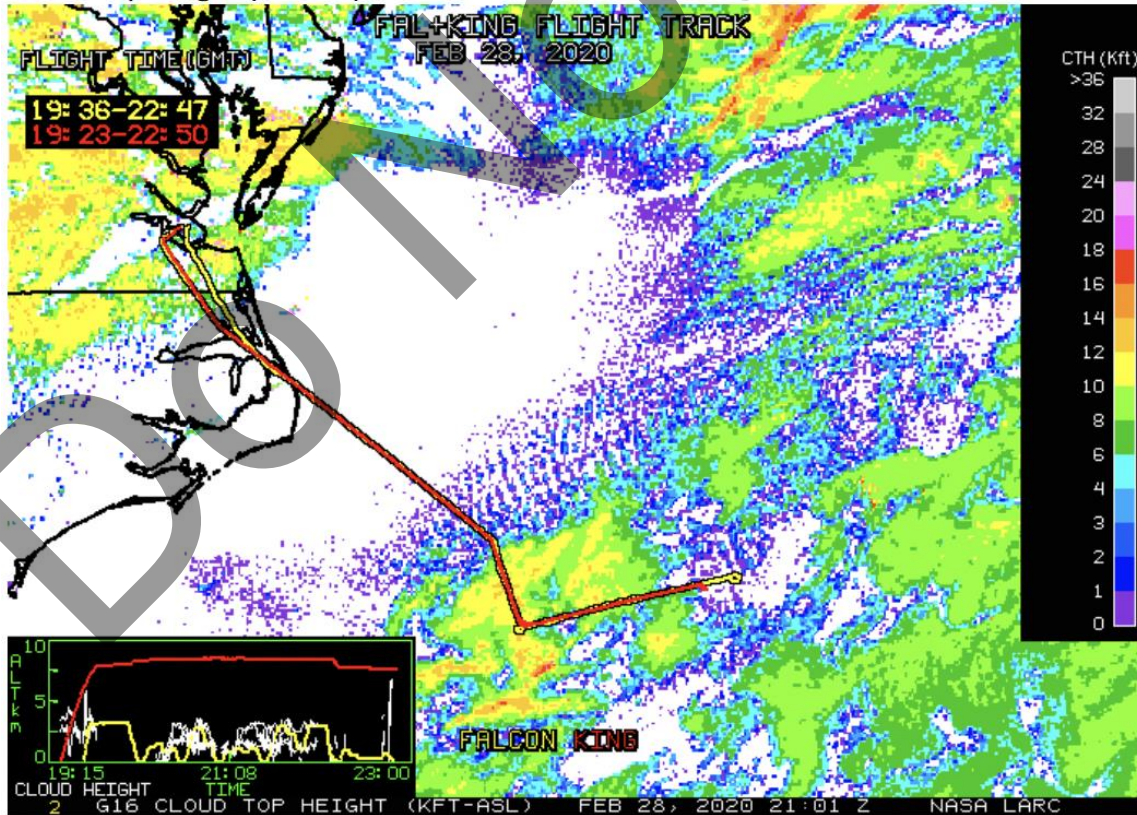




### Cloud Effective Temperature (K)

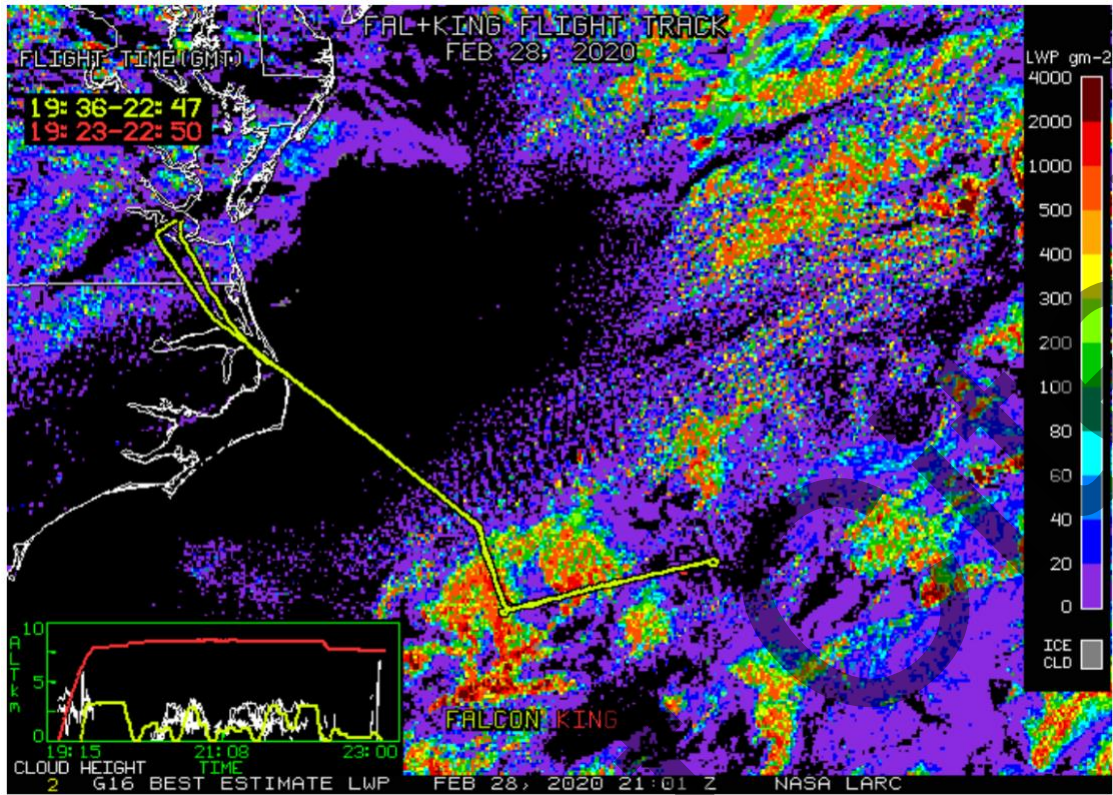


### Cloud-Top Height (Kft-ASL)

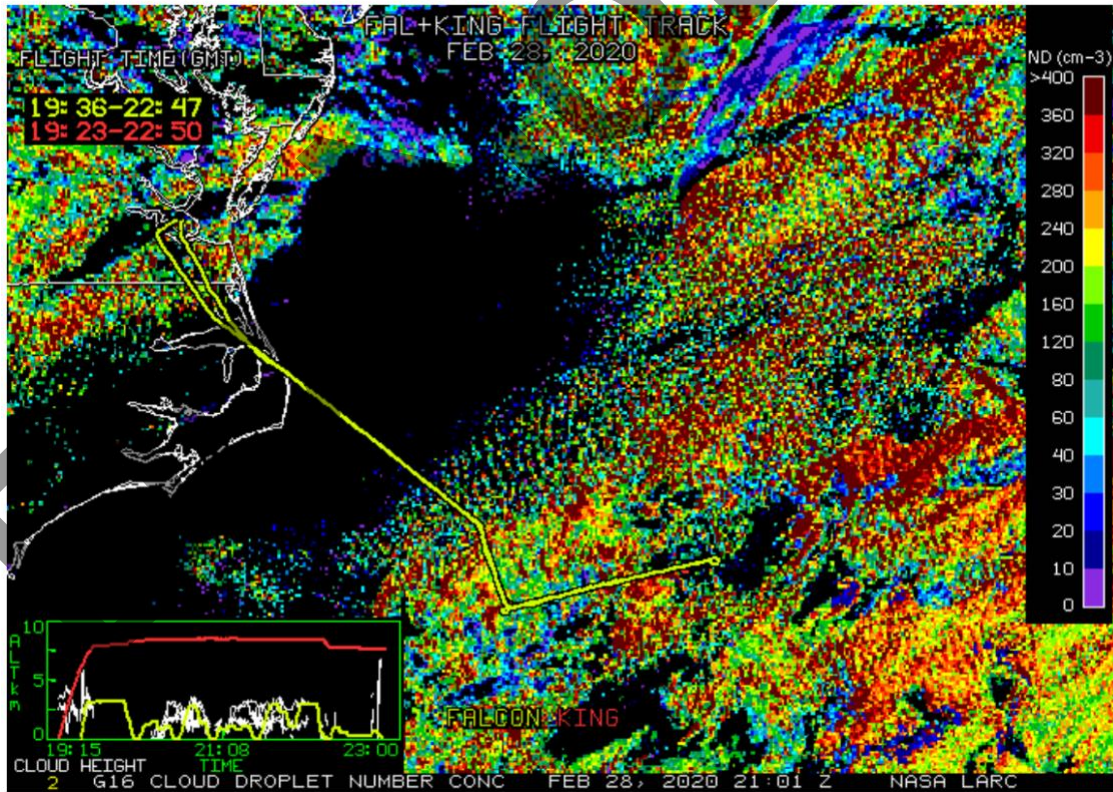




Liquid Water Path (gm-2)



Cloud Droplet Number Concentration (cm-3)





Do Not Cite!