

Flight Scientist Report
Friday 03/06/2020 ACTIVATE RF16

Flight Type: Statistical Survey Flight – Clouds
Flight Route: OXANA – southwest point (32.8, -75.2)
Special Notes:

King Air

- Good flight
- 3 dropsondes to capture potential changes throughout the flight to what was forecasted as a dynamic region throughout the flight period

Instruments:
Fine

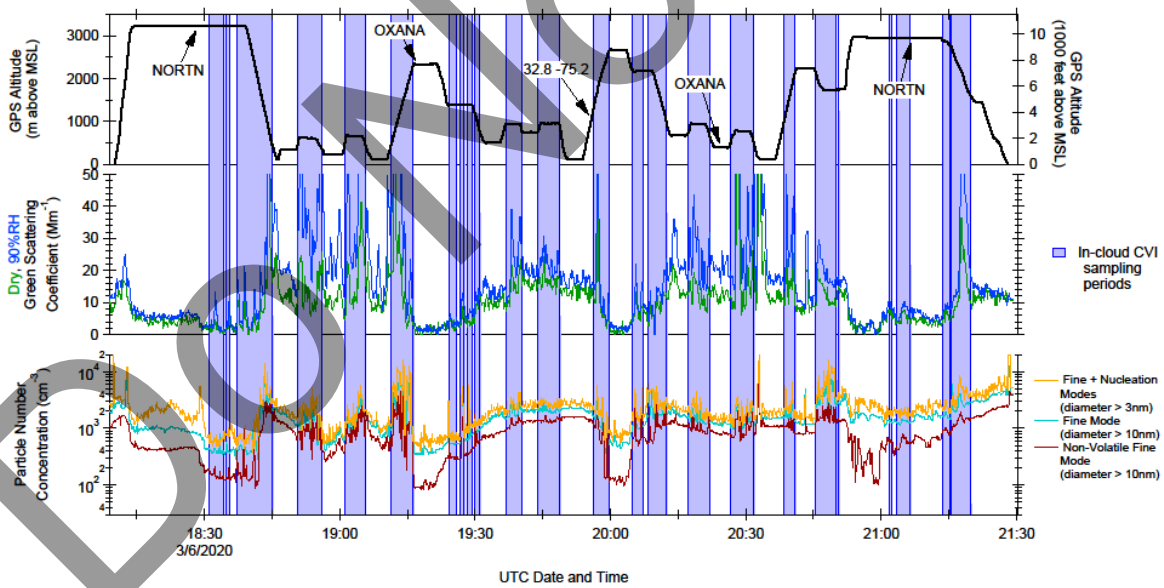
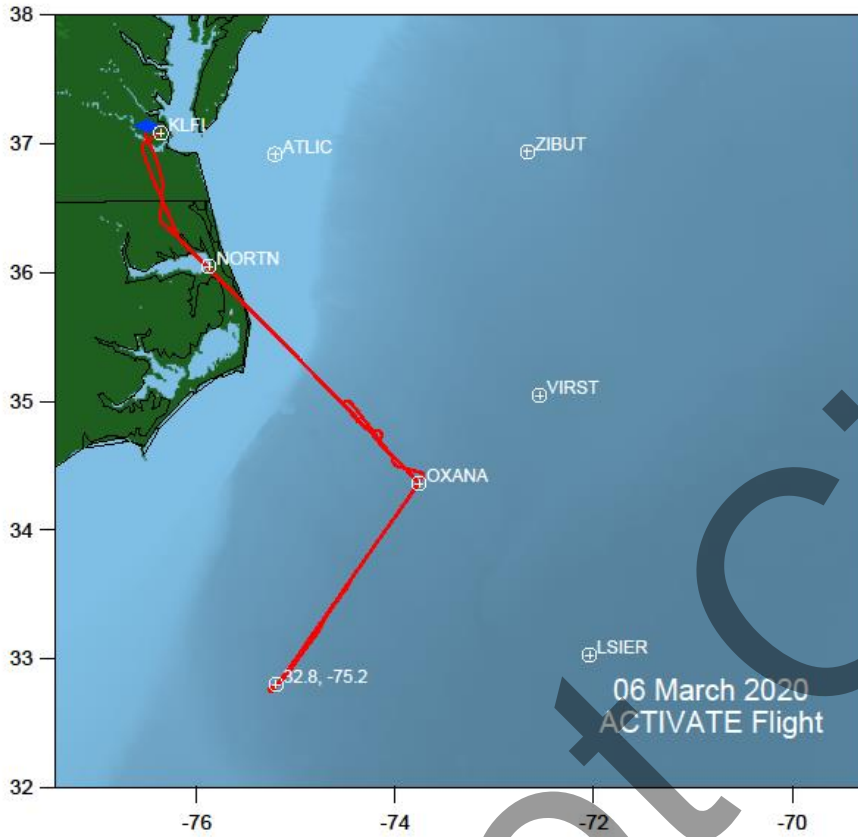
Falcon

- Completed 3 joint cloud ensembles

Instruments:
Fine

Do Not Cite!

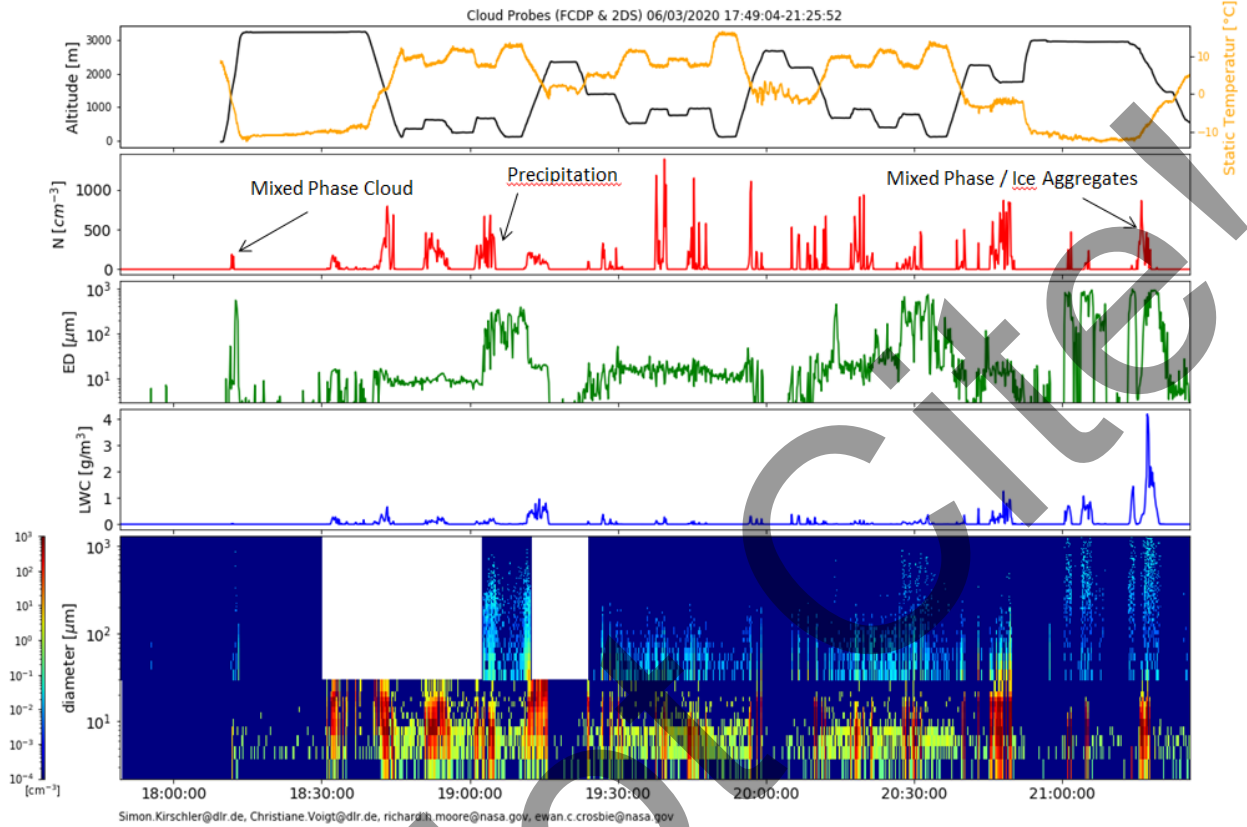
Rich Moore Quicklook Images:



Quicklook ACTIVATE Cloud Probes (FCDP & 2DS)

preliminary data, only for quicklook use

Simon Kirschler, Christiane Voigt, Richard Moore, Ewan Crosbie

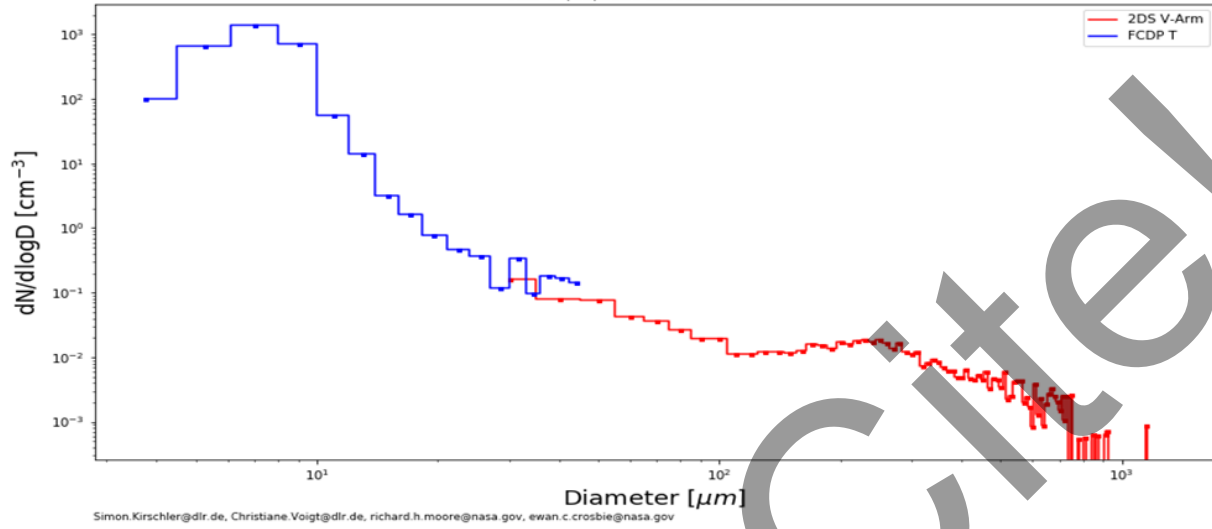


PSD ACTIVATE

preliminary data, only for quicklook use
Simon Kirschler, Christiane Voigt, Richard Moore, Ewan Crosbie



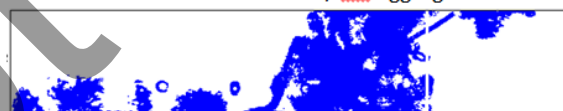
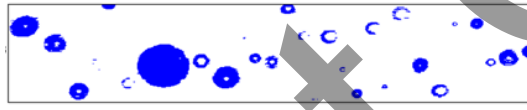
PSD 06/03/2020 19:03:50-19:04:30



Precipitation: 19:03:58

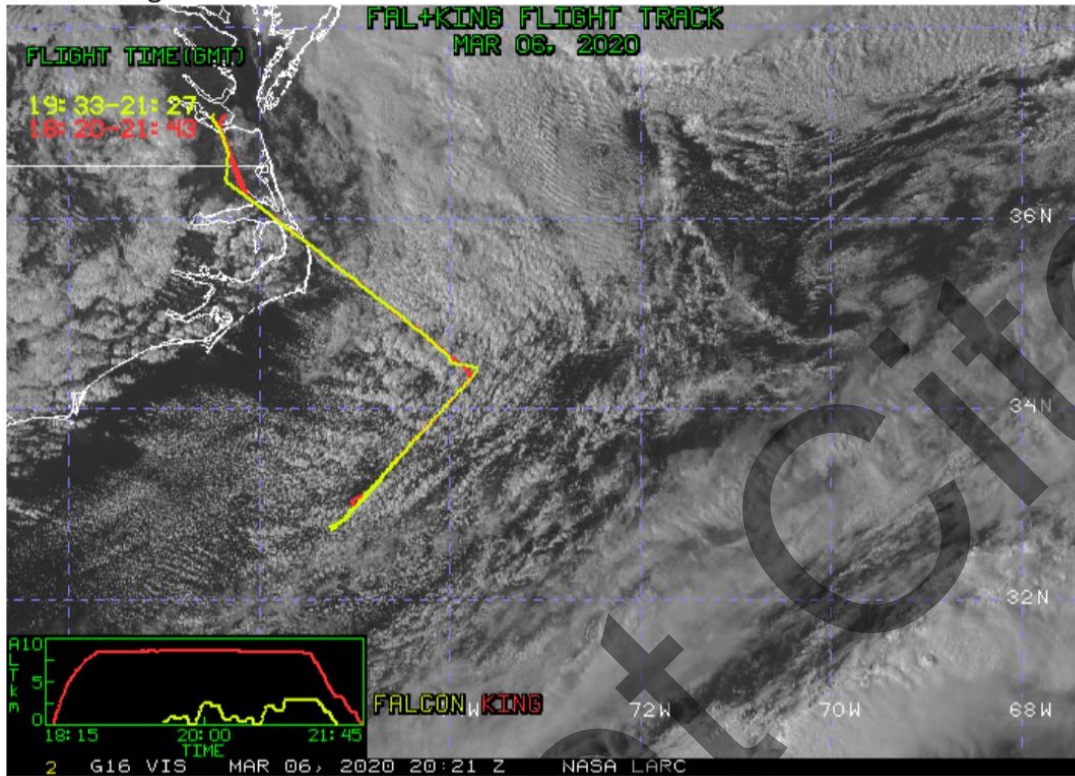
Mixed Phase Cloud: 18:12:41

Mixed Phase / Ice Aggregates: 21:18:52

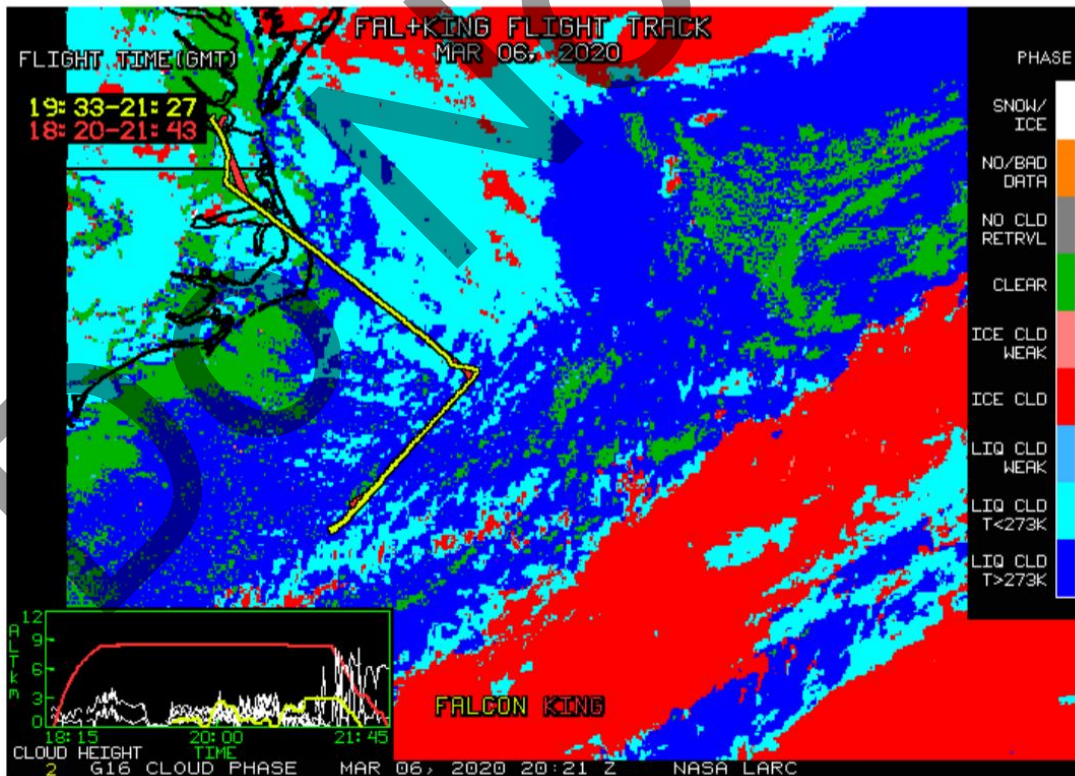


Do Not Cite!

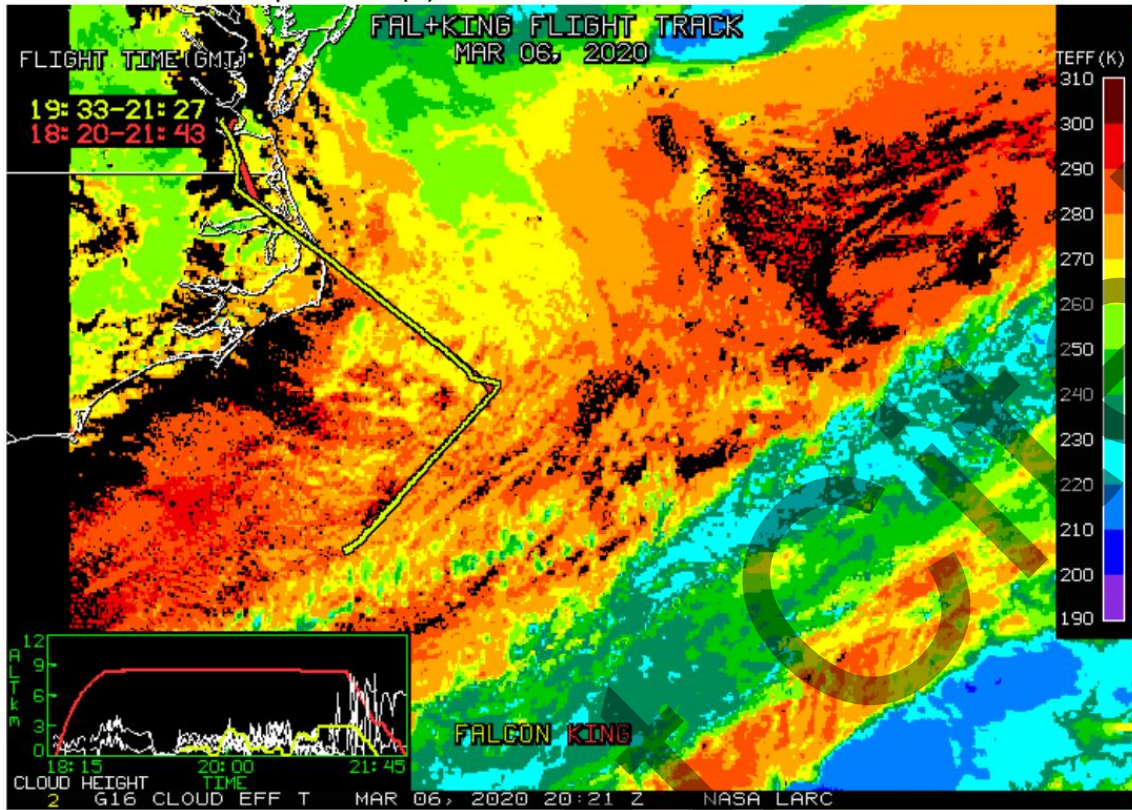
NASA-LaRC Clouds Group GOES-16 Quicklook Images for Flight 16, 20:21 UTC Mar 06, 2020
 (near middle of flight)
 Visible Image



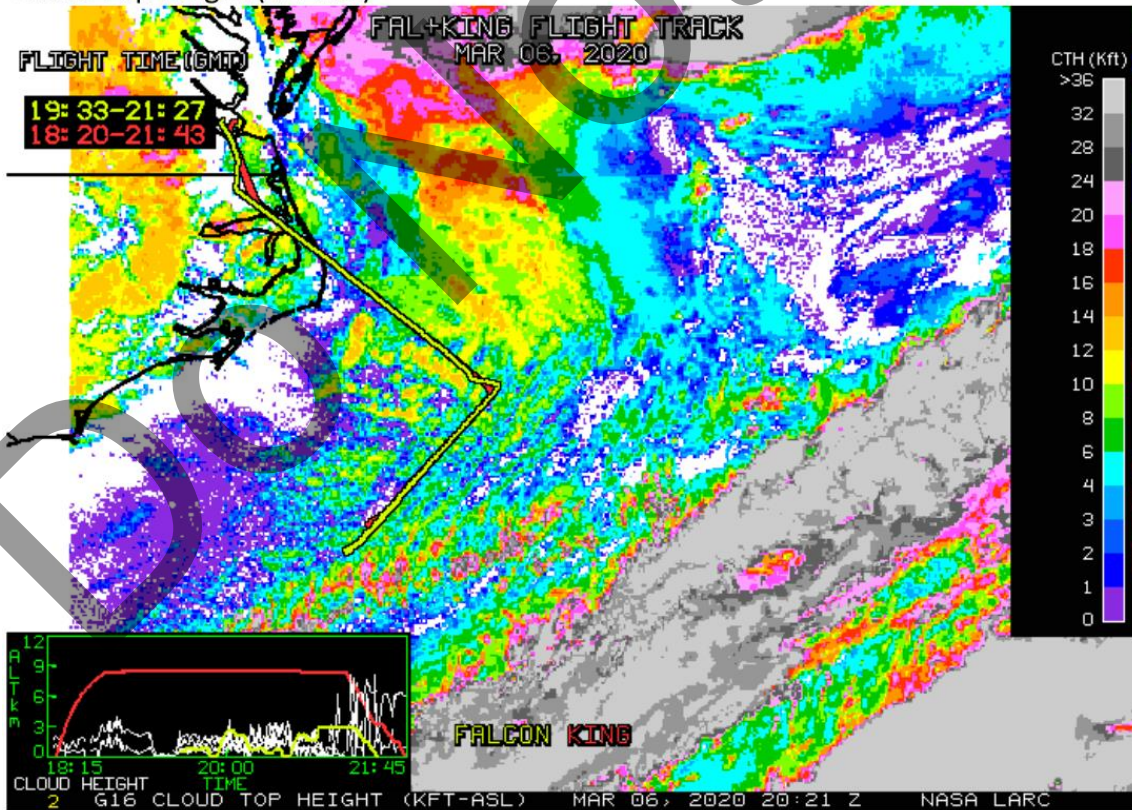
Cloud Phase



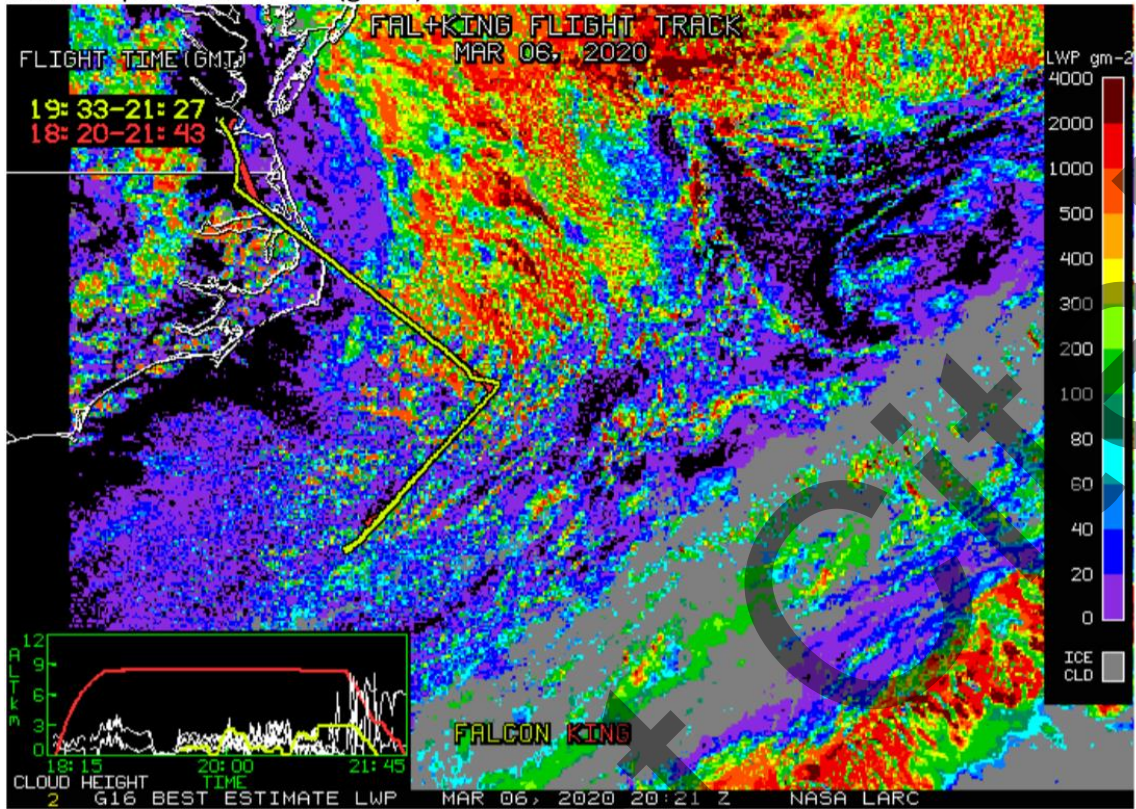
Cloud Effective Temperature (K)



Cloud-Top Height (Kft-ASL)



Cloud Liquid Water Path (gm^{-2})



Cloud Droplet Number Concentration (cm^{-3})

