

Flight Scientist Report
Thursday 03/12/2020 ACTIVATE RF22

Flight Type: Statistical Survey Flight – OXANA then SSW
Flight Route: KLFI - KECG - OXANA - RUNDY - southern point - RUNDY - OXANA - KECG - KLFI

Special Notes: Pilots were concerned with convection along KECG-OXANA flight leg. Called ahead to allow access to warning areas if they need to avoid the convection. Take for both planes were without an issue.

HU25 did cross over the cold pool cloud line on the way out.

King Air

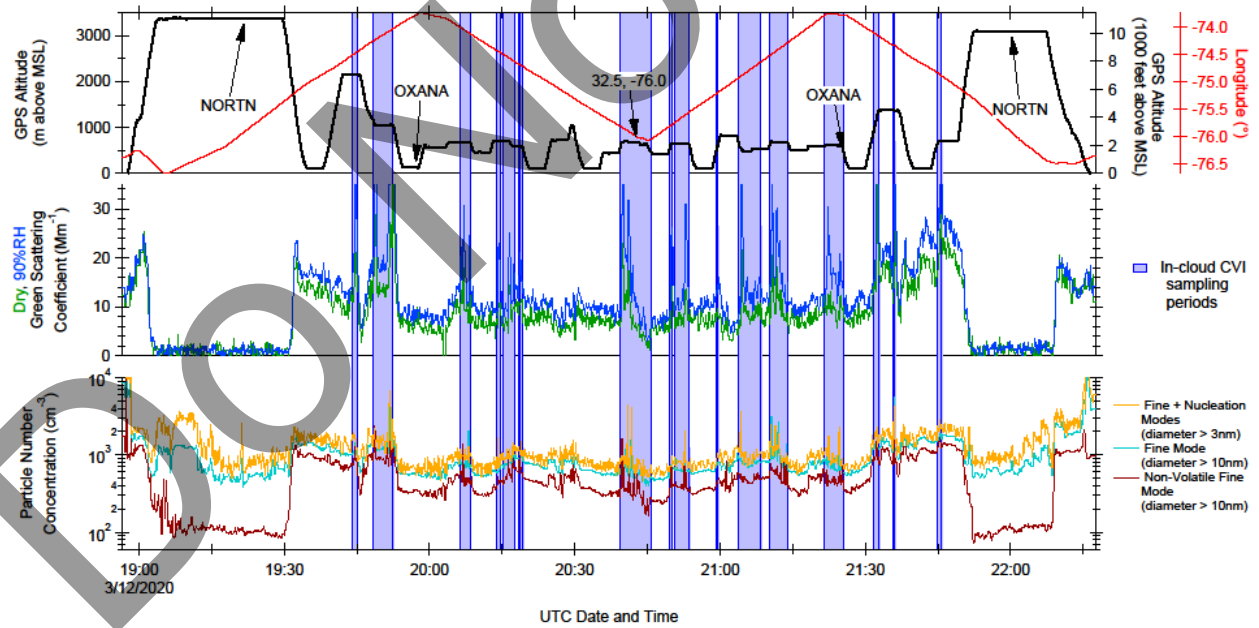
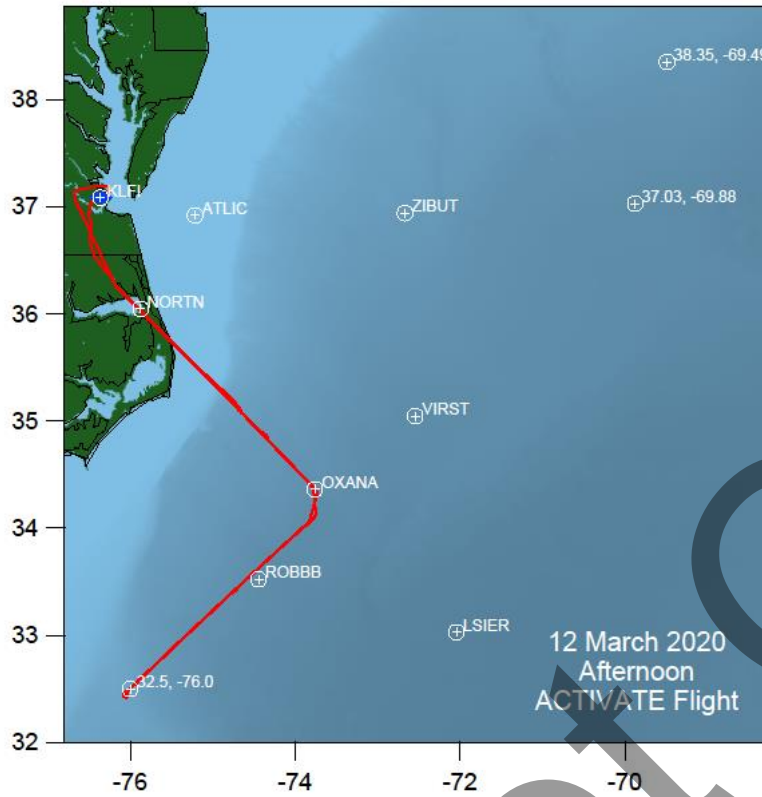
- Deviated due to the convective clouds and concerns about icing. The HU25 stayed the course on the way out.

Instruments:
All instruments nominal.

Falcon

○
Instruments:
All instruments nominal. No issues on power transition or takeoff.

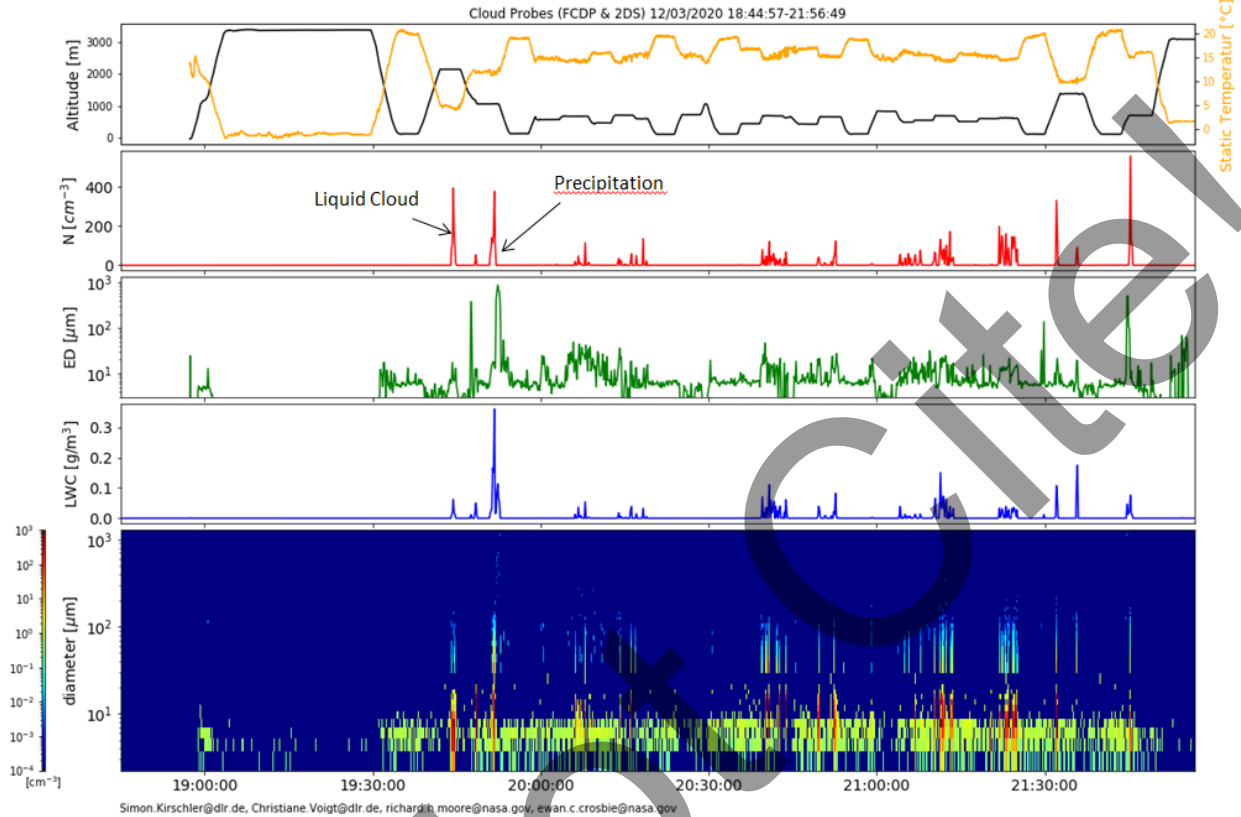
Rich Moore Quicklook Images:



Quicklook ACTIVATE Cloud Probes (FCDP & 2DS)

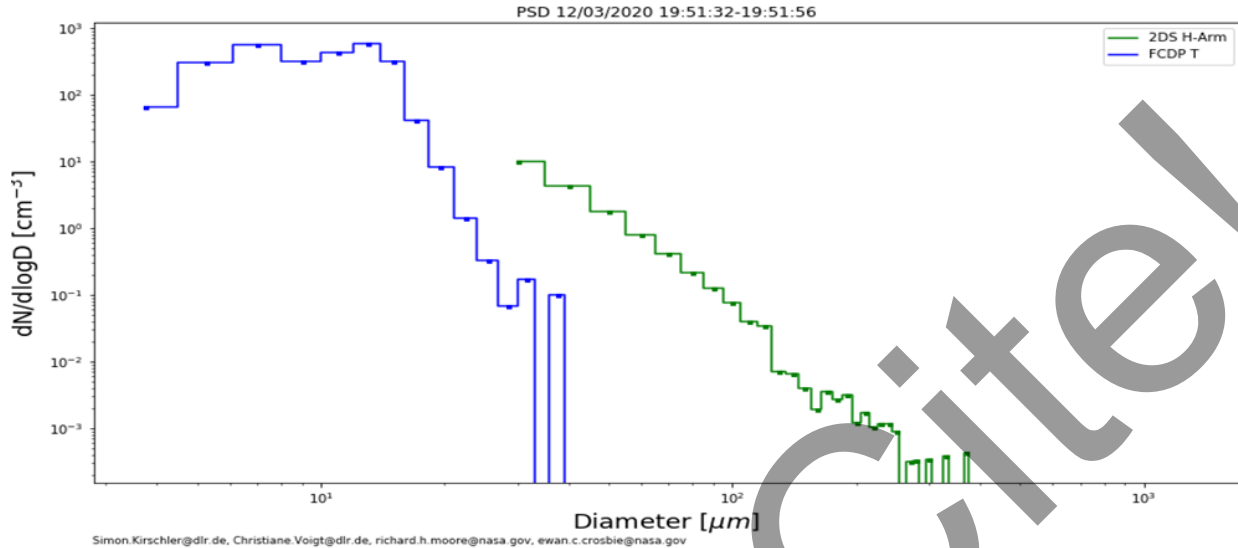
preliminary data, only for quicklook use

Simon Kirschler, Christiane Voigt, Richard Moore, Ewan Crosbie

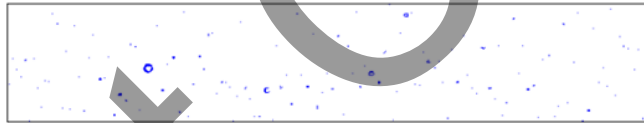


PSD ACTIVATE

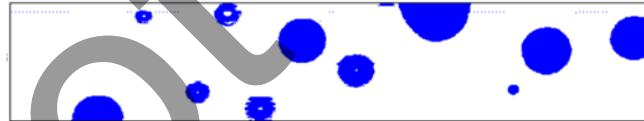
preliminary data, only for quicklook use
Simon Kirschler, Christiane Voigt, Richard Moore, Ewan Crosbie



Liquid Cloud: 19:44:33

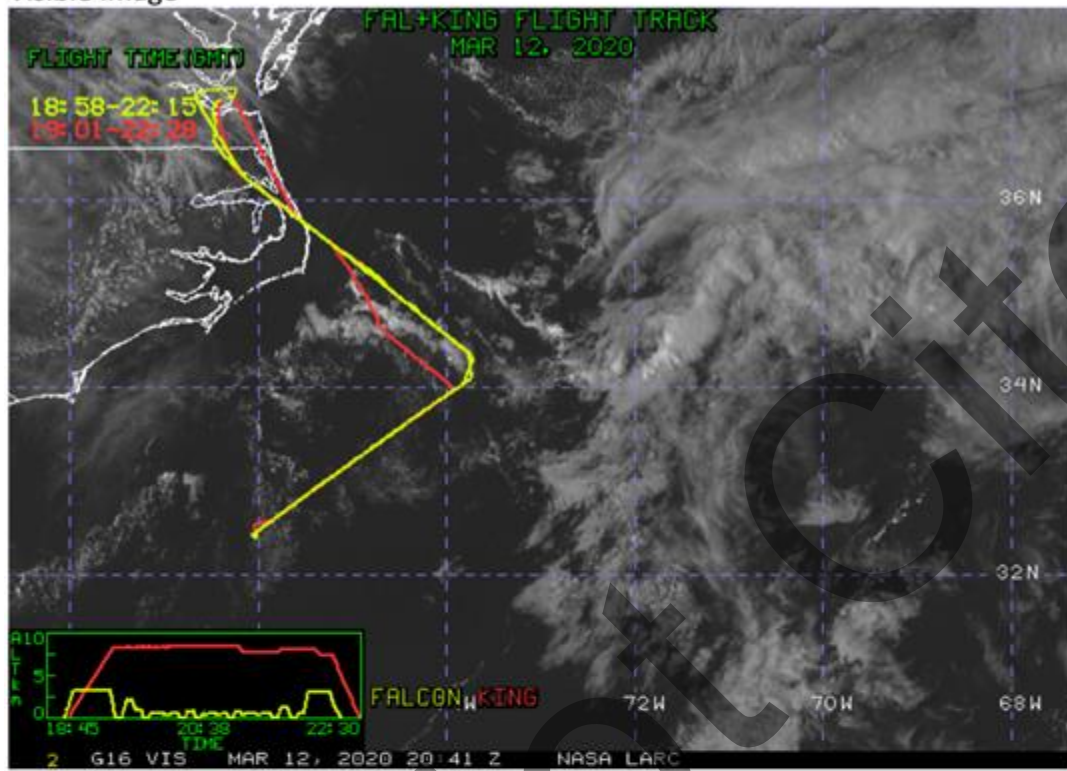


Precipitation: 19:52:38

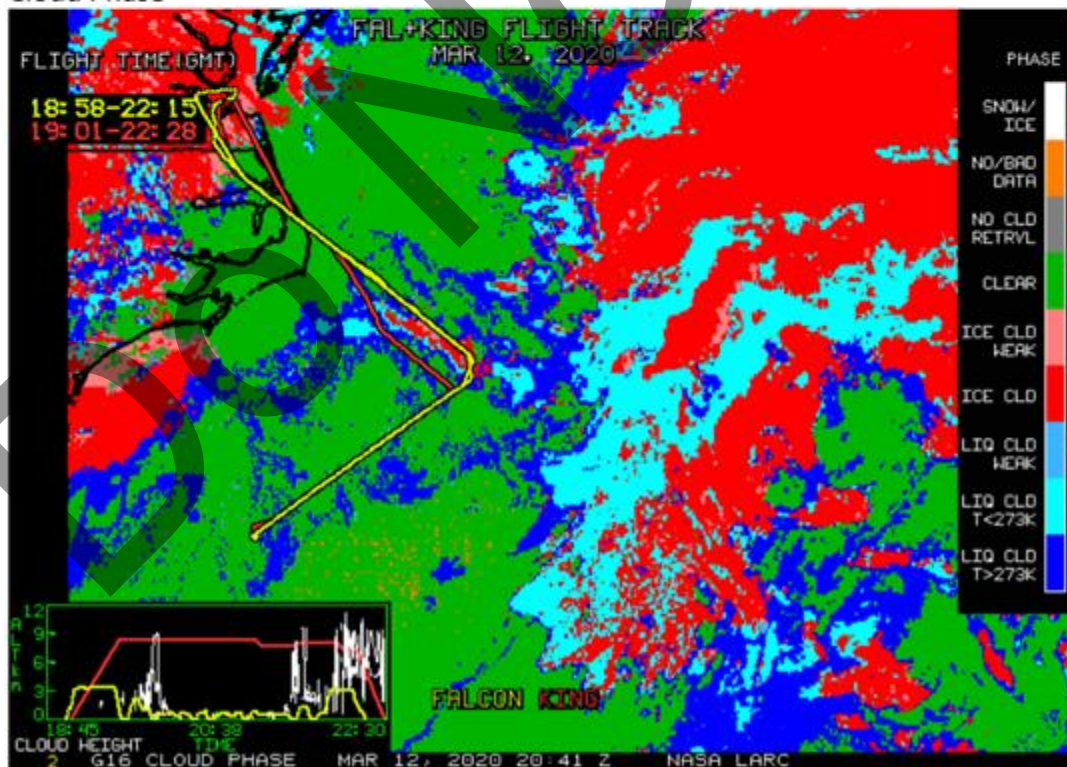


NASA-LaRC Clouds Group GOES-16 Quicklook Images for Flight 22, 20:41 UTC Mar 12, 2020 (near middle of flight)

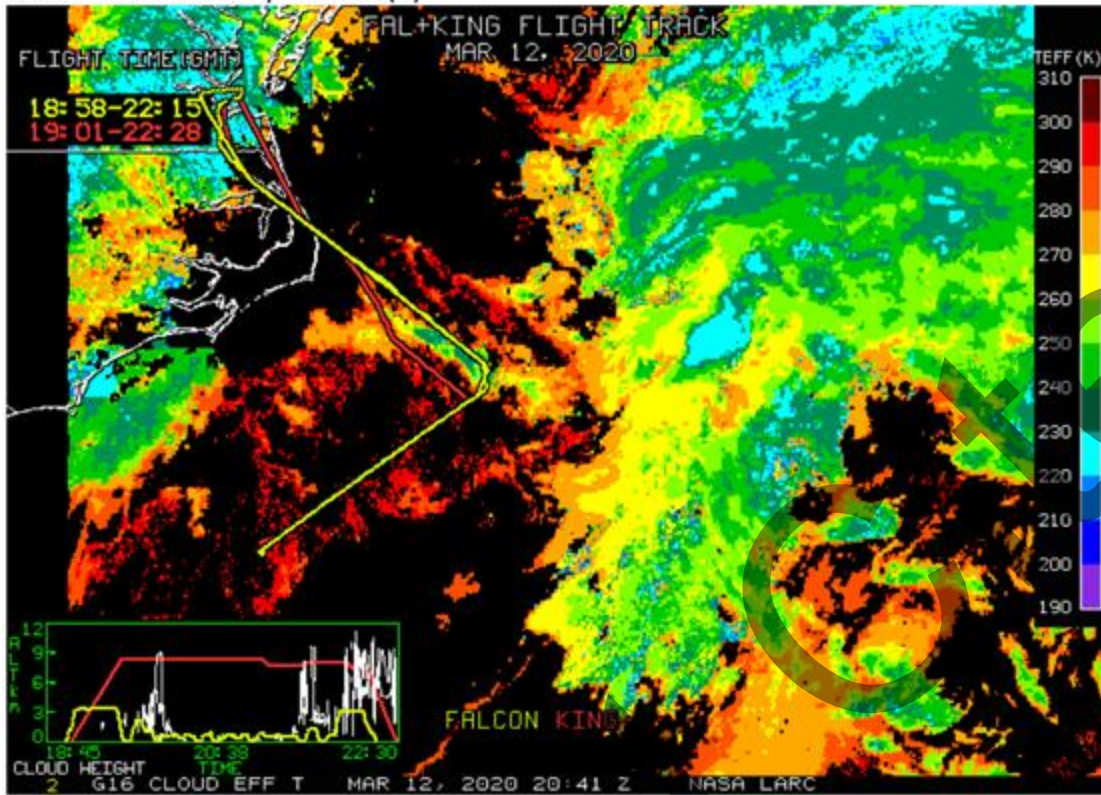
Visible Image



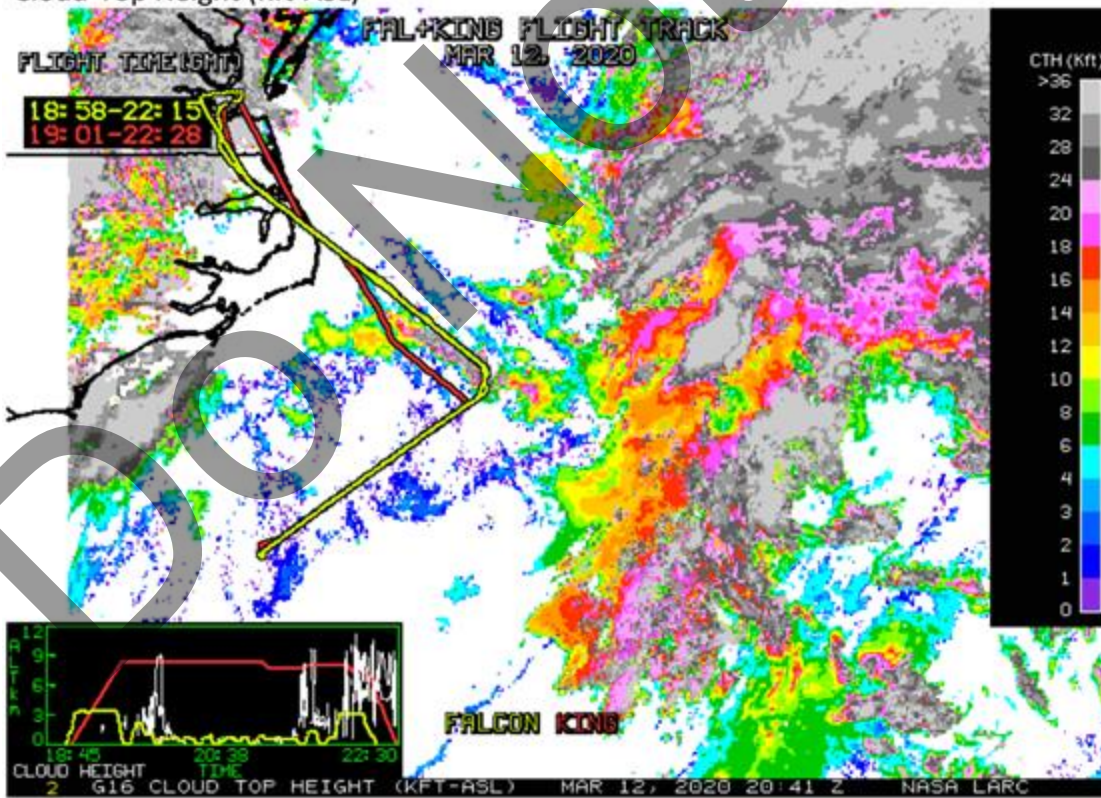
Cloud Phase



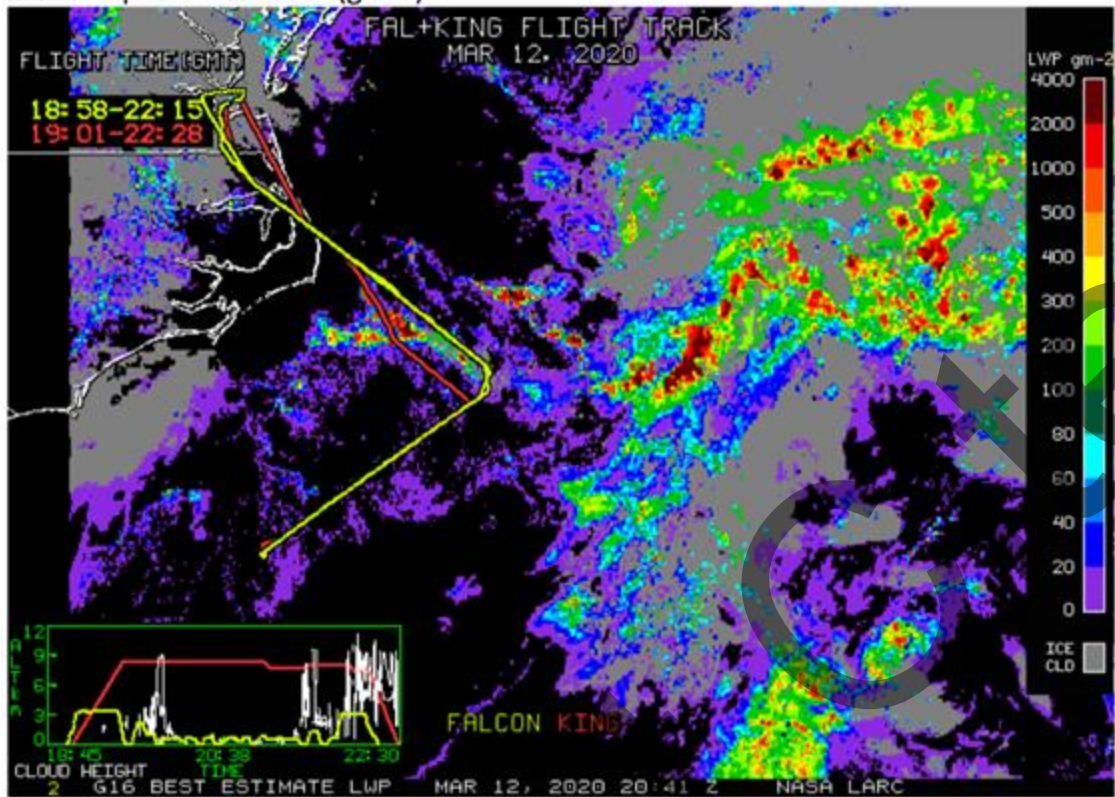
Cloud Effective Temperature (K)



Cloud-Top Height (Kft-ASL)



Cloud Liquid Water Path (gm-2)



Cloud Droplet Number Concentration (cm-3)

