

Flight Scientist Report
Monday 03/14/2022 ACTIVATE RF139

Flight Type: Statistical Survey Flight

Flight Route:

Special Notes: First of two flights today. Better conditions down south working through OXANA as compared to working more north outside of ZIBUT.

King Air

Pilot report (Thorson):

AM sortie flown out oxana. updated turn point in flight. relatively good coincidence.

Flight scientist report ():

Falcon

Pilot report (Slover):

ACTIVATE research flight completed as planned. KLFI ECG OXANA 3303N07123W OXANA ECG KLFI. Statistical survey along track. Within 10-min coincidence throughout. Clouds mostly from 3000' to 6000'.

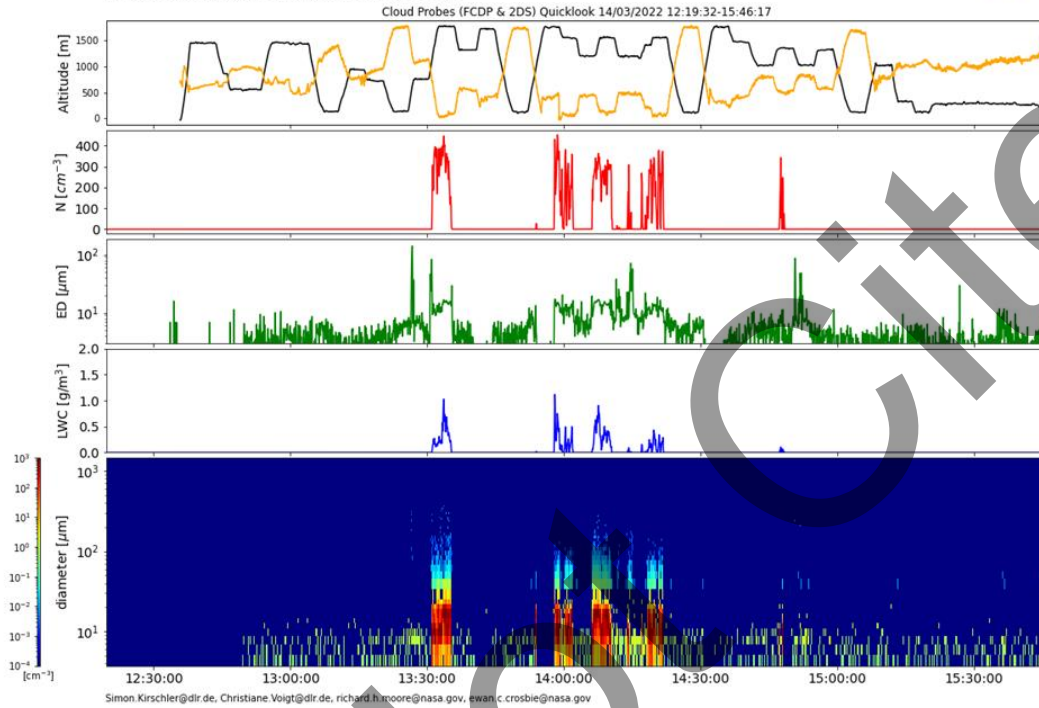
Flight scientist report (Crosbie):

Stat survey OXANA-SE. Clear conditions encountered overland and from OBX to near OXANA. A band of cloud was present over OXANA followed by a clearing and then a more extensive cloudy region extending to the turn. Clouds had a decoupled appearance with small Cu topping a deep mixed layer with some Cu developing up to a more extensive stratiform near the inversion. In the thicker band near OXANA there was evidence of some drizzle production. Generally quite clean conditions throughout.

Quicklook ACTIVATE Cloud Probes (FCDP & 2DS) Quicklook

preliminary data, only for quicklook use

Simon Kirschler, Christiane Voigt, Richard Moore, Ewan Crosbie

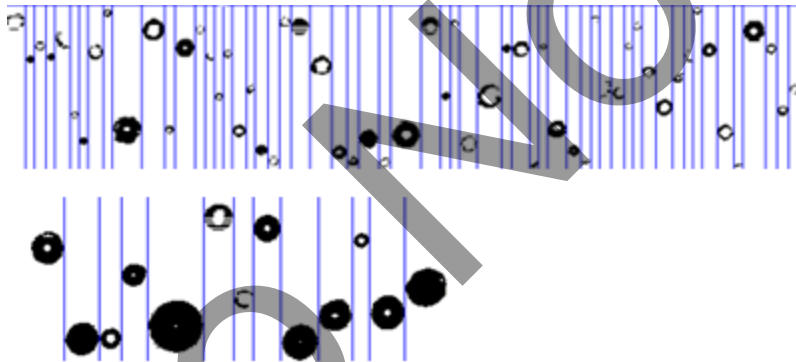
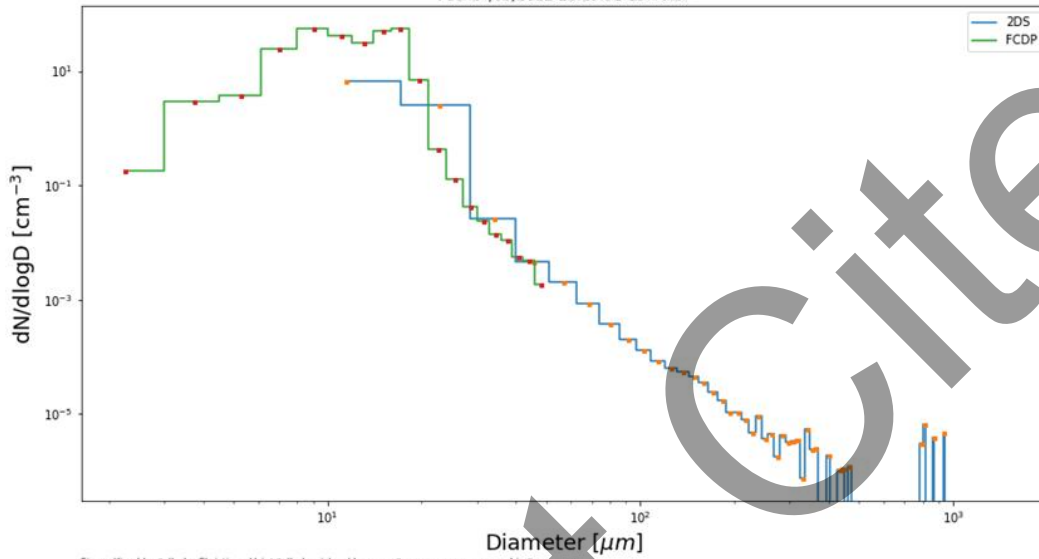


PSD ACTIVATE

preliminary data, only for quicklook use
Simon Kirschler, Christiane Voigt, Richard Moore, Ewan Crosbie

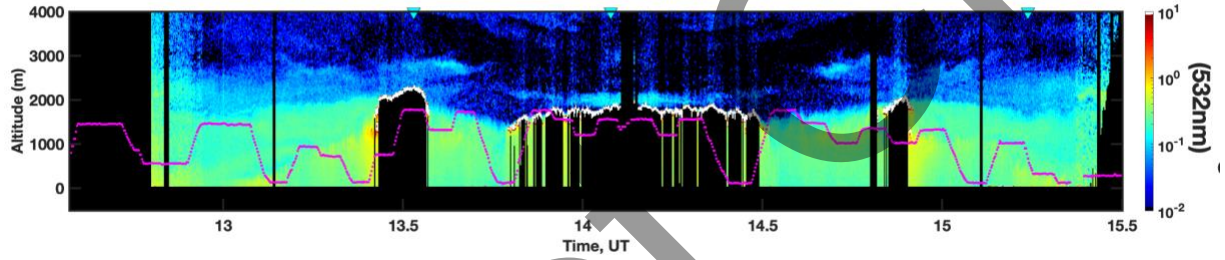
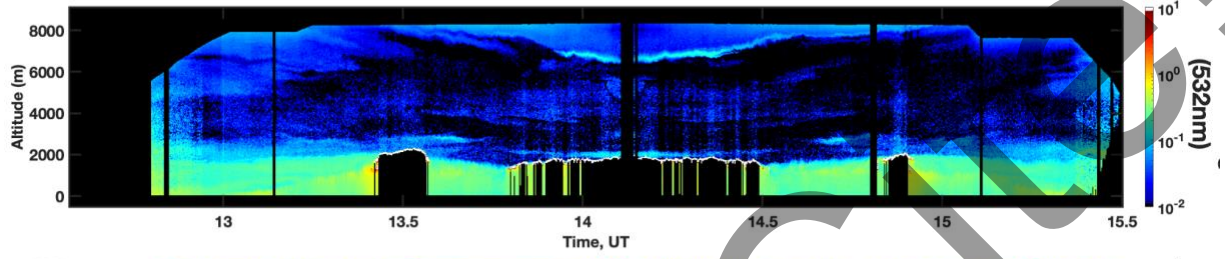
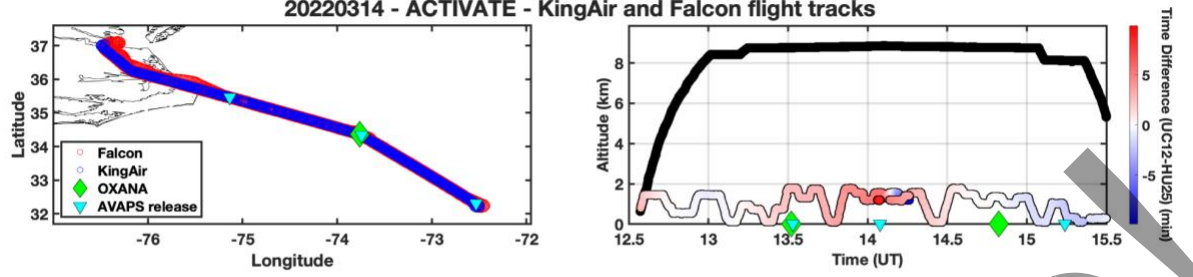


PSD 14/03/2022 12:19:32-15:46:17



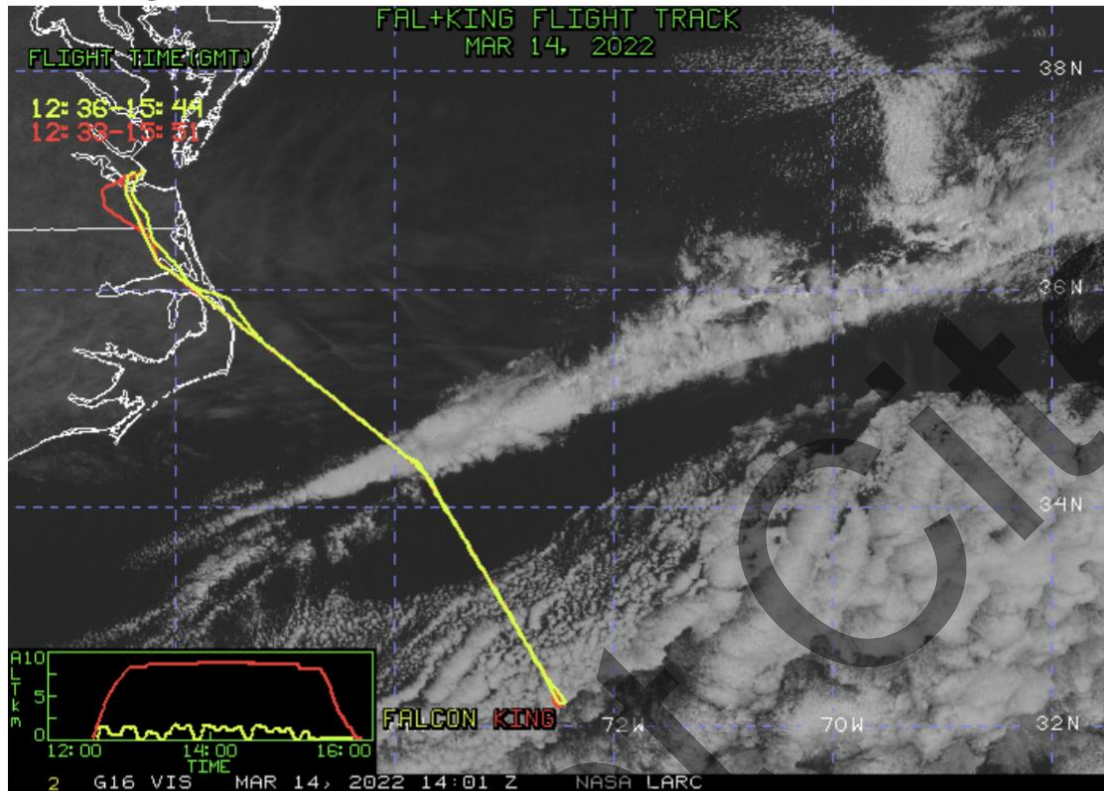
Only pure liquid clouds with very rare
Precip.

20220314 - ACTIVATE - KingAir and Falcon flight tracks

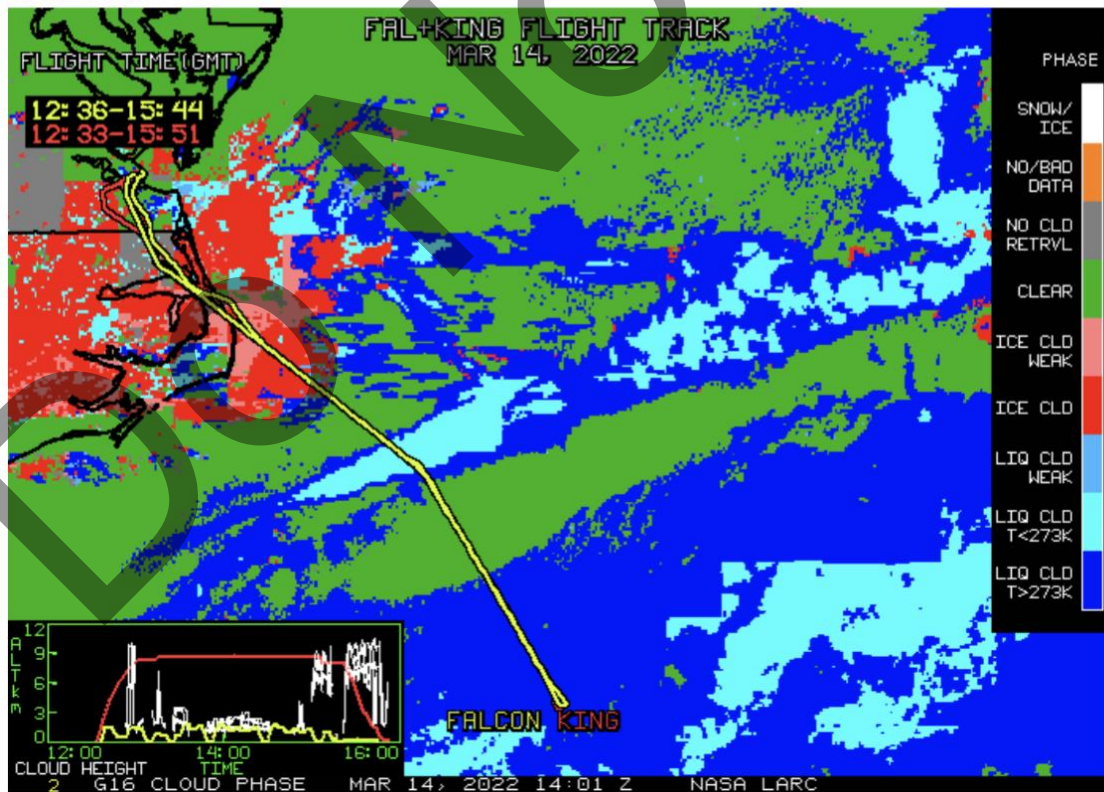


Do Not

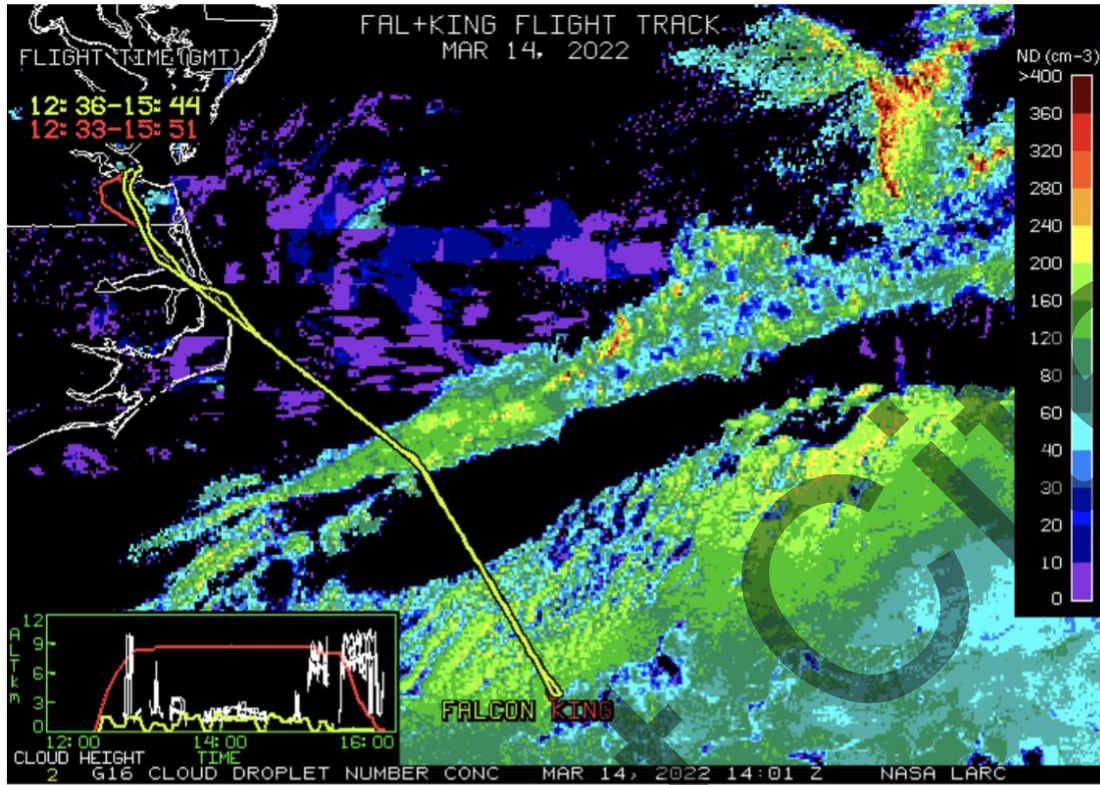
NASA-LaRC Clouds Group GOES-16 Quicklook Images for Flight 139, 14:01 UTC Mar 14, 2022
Visible Image



Cloud Phase



Cloud Droplet Number Concentration (cm-3)



Cloud-Top Height (Kft-ASL)

