

Flight Scientist Report
Thursday 06/08/2022 ACTIVATE RF168

Flight Type: Statistical Survey Flight
Flight Route:
Special Notes: ASTER underflight

King Air

Pilot report (Wusk):
First flight of a two flight day in coincidence with HU 25. Flown as planned. Crew Sandeen, Wusk, Shingler

Flight scientist report (Shingler):

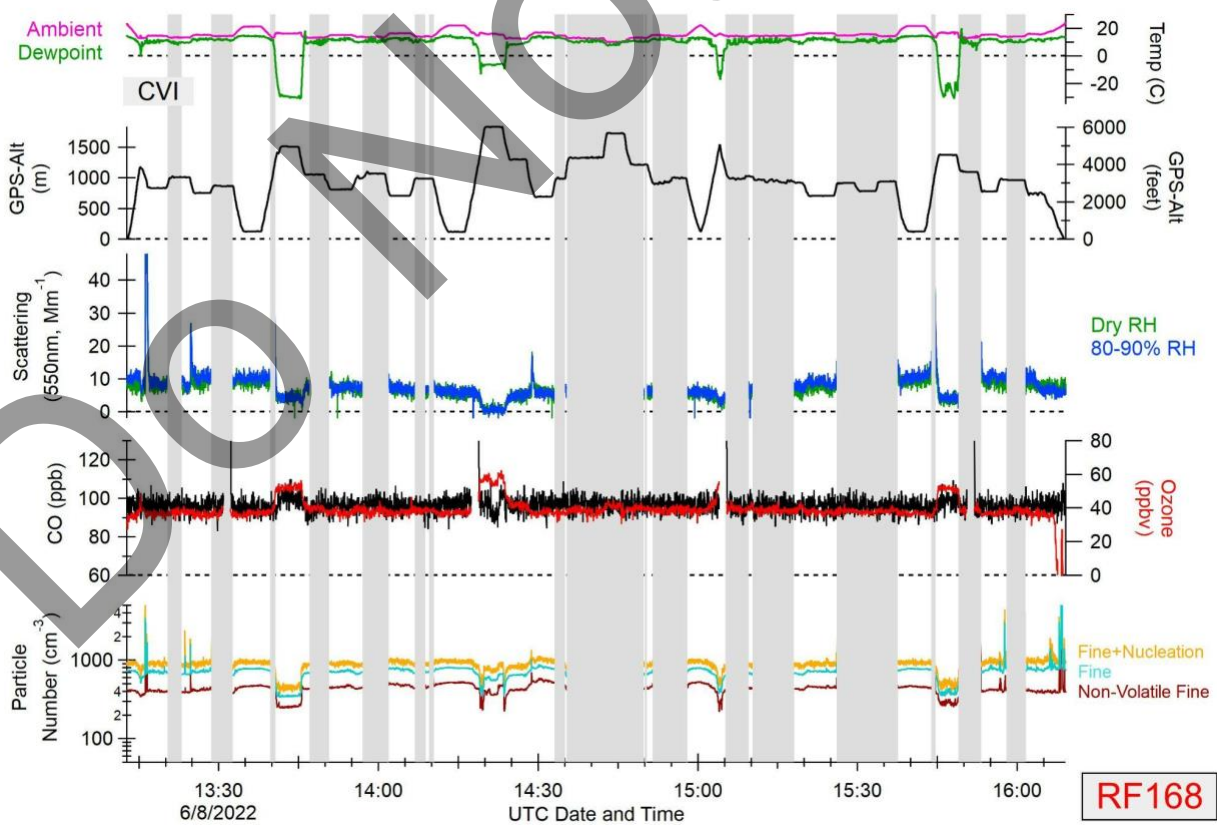
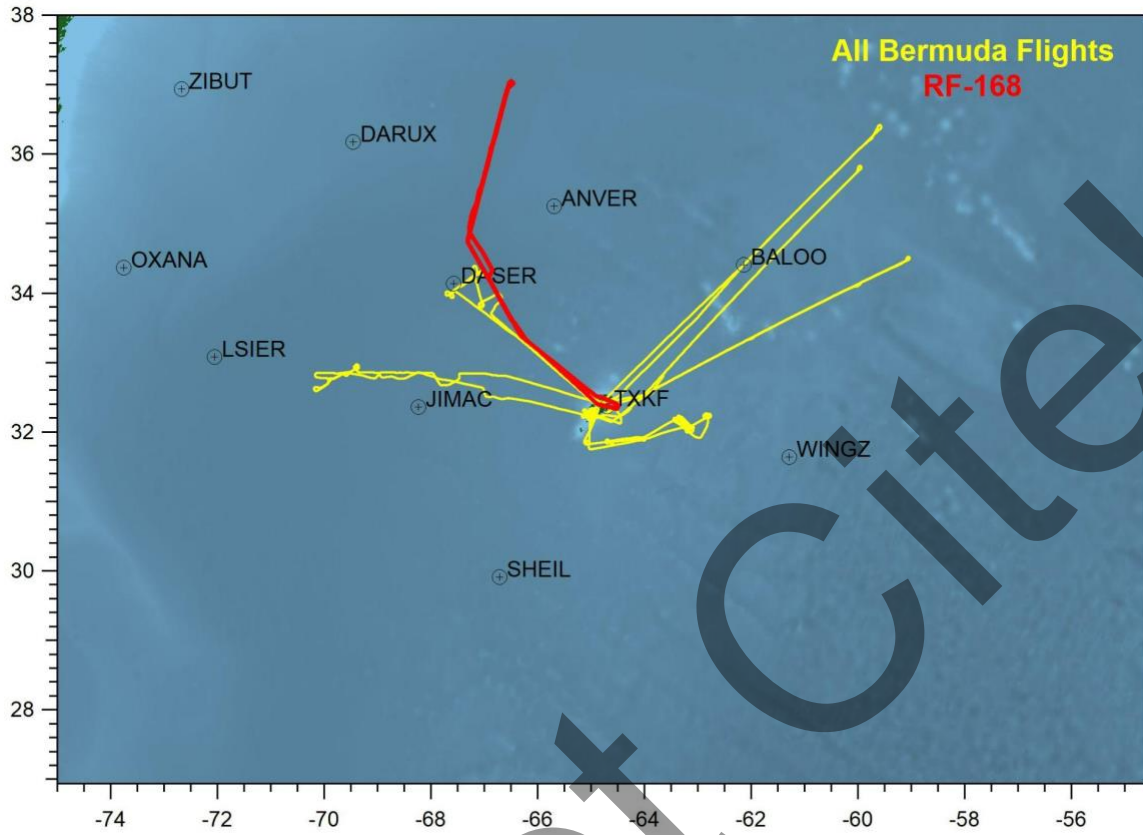
Executed a statistical survey under an ASTER overpass to the NW of Bermuda. The cloud field looked very similar to the prior day with shallow cu CTHs at 4kft and a fairly clean FT above. Today, there was substantially more cirrus above the aircraft along the ASTER track. It looked fairly thin, but was persistent. Very sparse mid level cirrus was seen below the aircraft but was not an issue.

5 sondes were dropped along the track
Start of ASTER track
Turn point of ASTER track
ASTER at overpass
FLAMO
COAST

Falcon

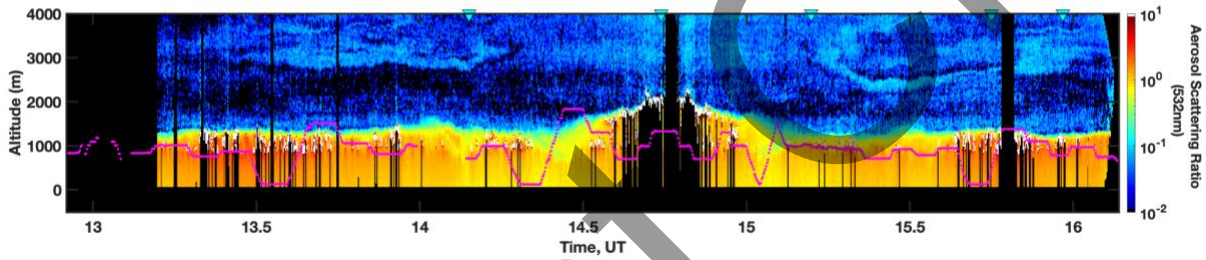
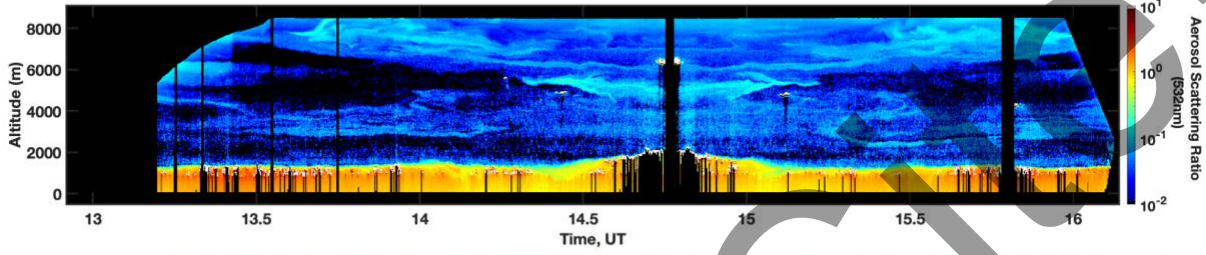
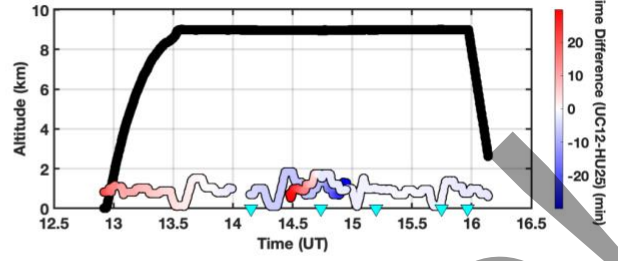
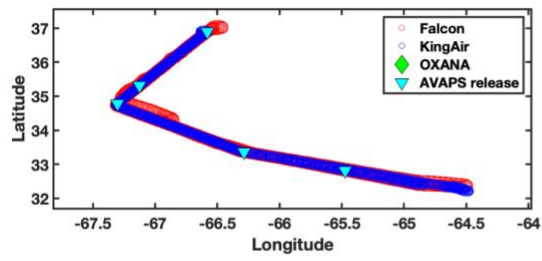
Pilot report (Baxley):
ACTIVATE coordinated flight with HU-25 and UC-12; Thorson/Baxley, Crosbie/Winstead. TXKF - FLAMO - 3444.14N/06718.59W - 3799.52N/06632.22W - 3520.04N/06707.072 - 3444.14N/06718.59W - FLAMO - TXKF. Mission flown as planned, weather as expected. Deviated from course at the direction of the research team. No issues or anomalies.

Flight scientist report ():



Do Not Cite!

20220608 - ACTIVATE - KingAir and Falcon flight tracks



DOI

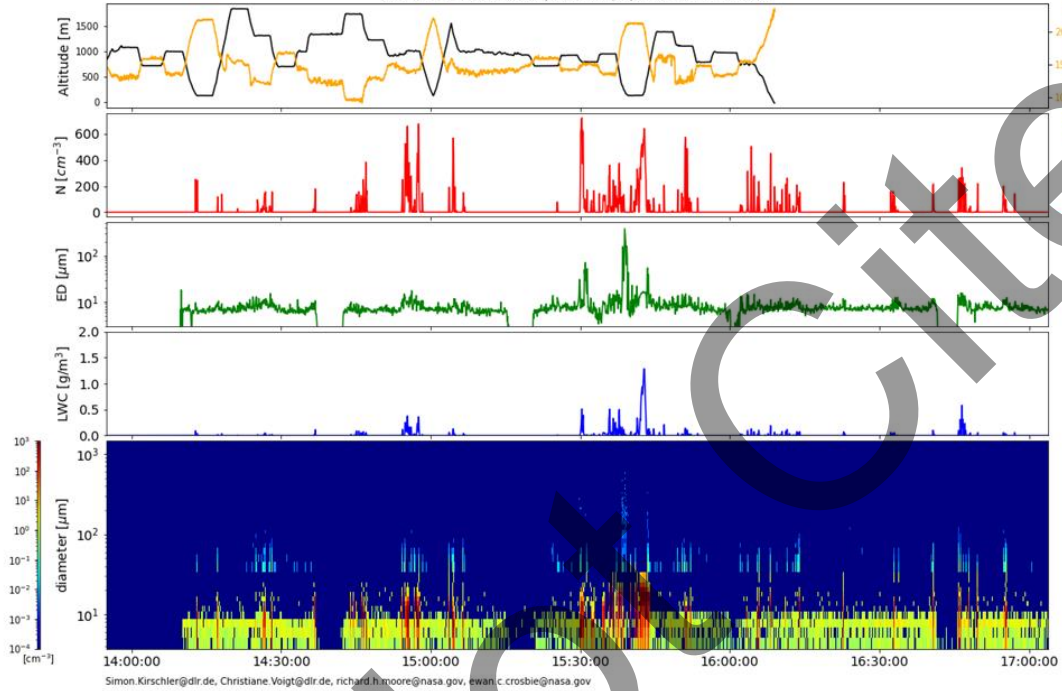
Quicklook ACTIVATE Cloud Probes (FCDP & 2DS) Quicklook

preliminary data, only for quicklook use

Simon Kirschler, Christiane Voigt, Richard Moore, Ewan Crosbie



Cloud Probes (FCDP & 2DS) Quicklook 08/06/2022 13:54:51-17:03:53

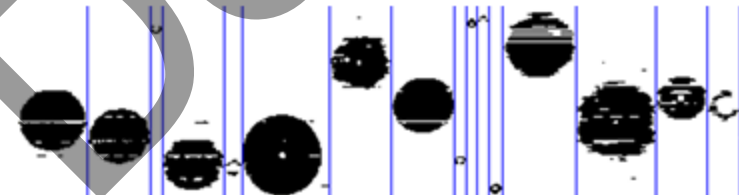
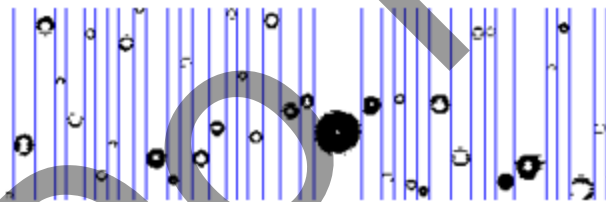
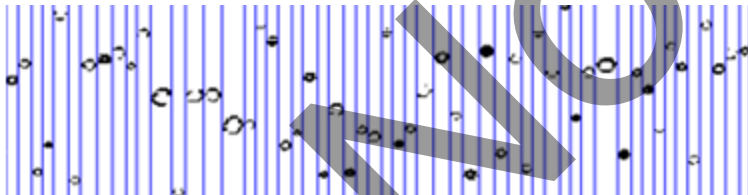
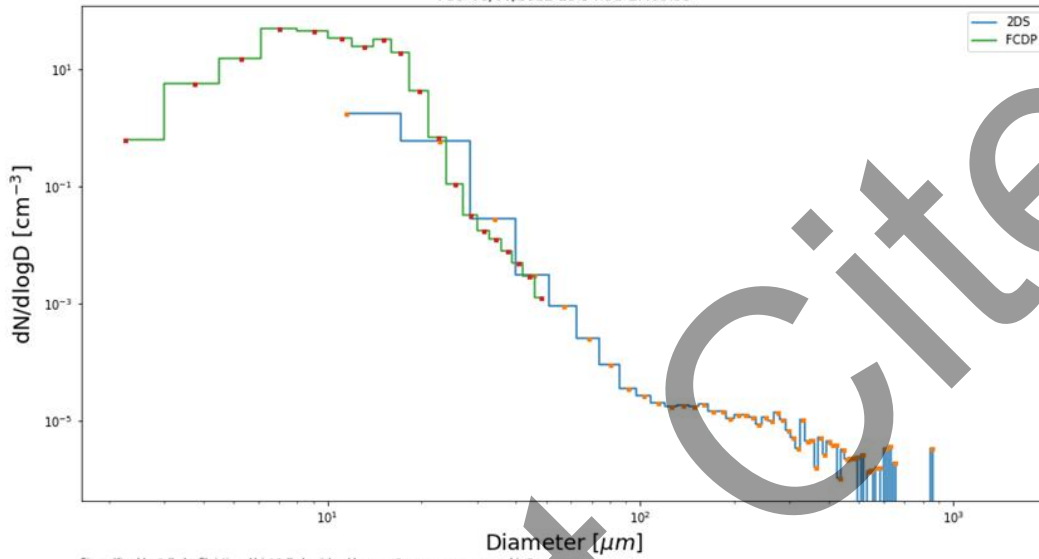


PSD ACTIVATE

preliminary data, only for quicklook use
Simon Kirschler, Christiane Voigt, Richard Moore, Ewan Crosbie

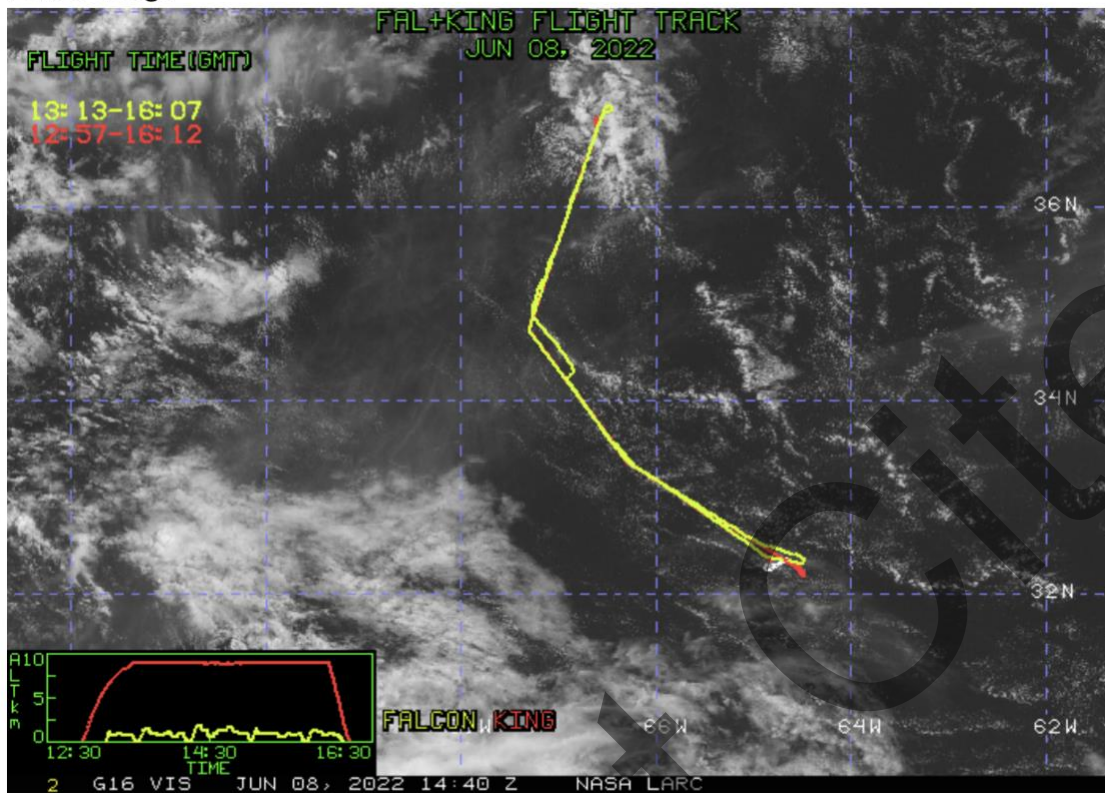


PSD 08/06/2022 13:54:51-17:03:53

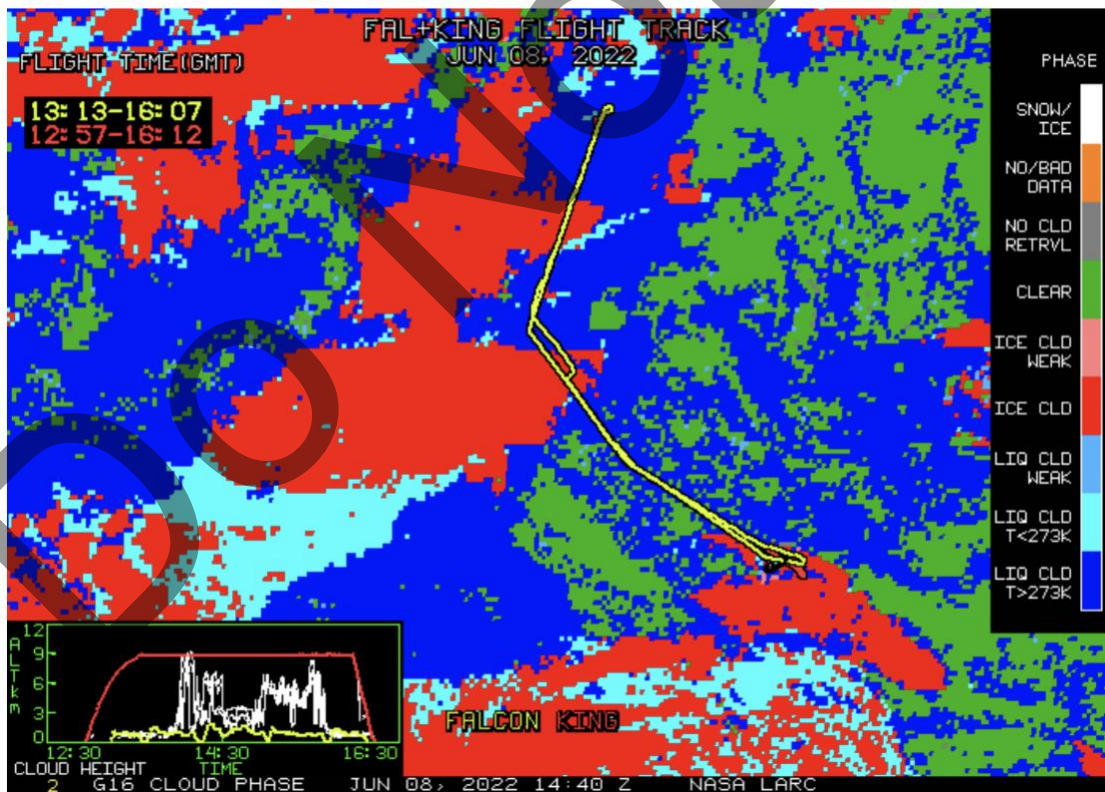


Only pure liquid clouds with Precip.

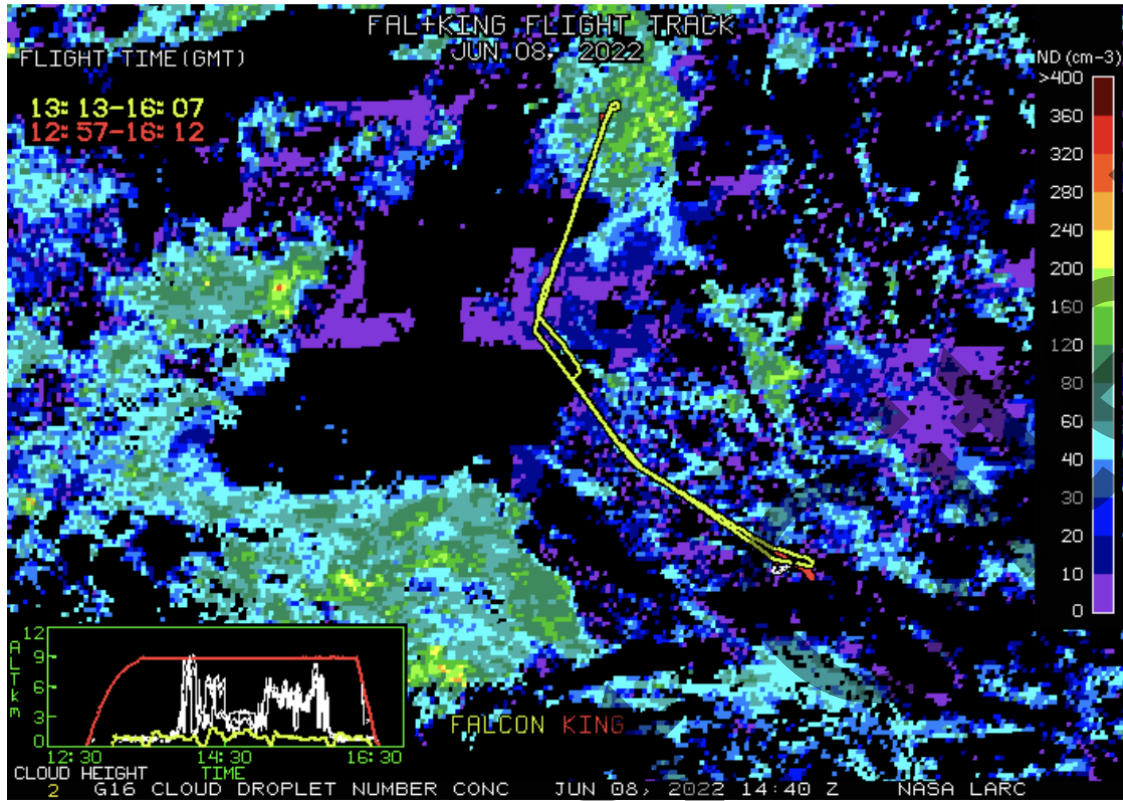
Visible Image



Cloud Phase



Cloud Droplet Number Concentration (cm-3)



Cloud-Top Height (Kft-ASL)

