

Flight Scientist Report
Friday 06/17/2022 ACTIVATE RF178

Flight Type: Statistical Survey Flight
Flight Route:
Special Notes:

King Air

Pilot report ():

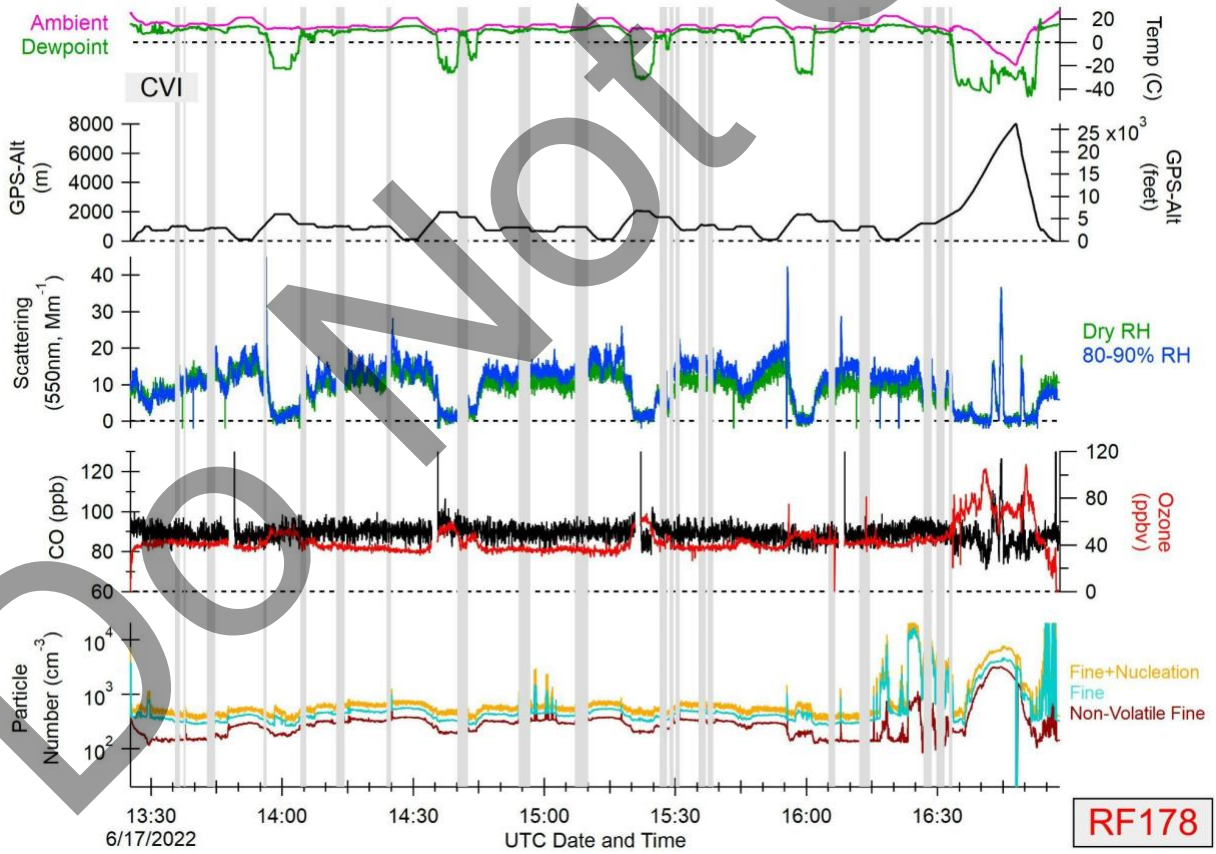
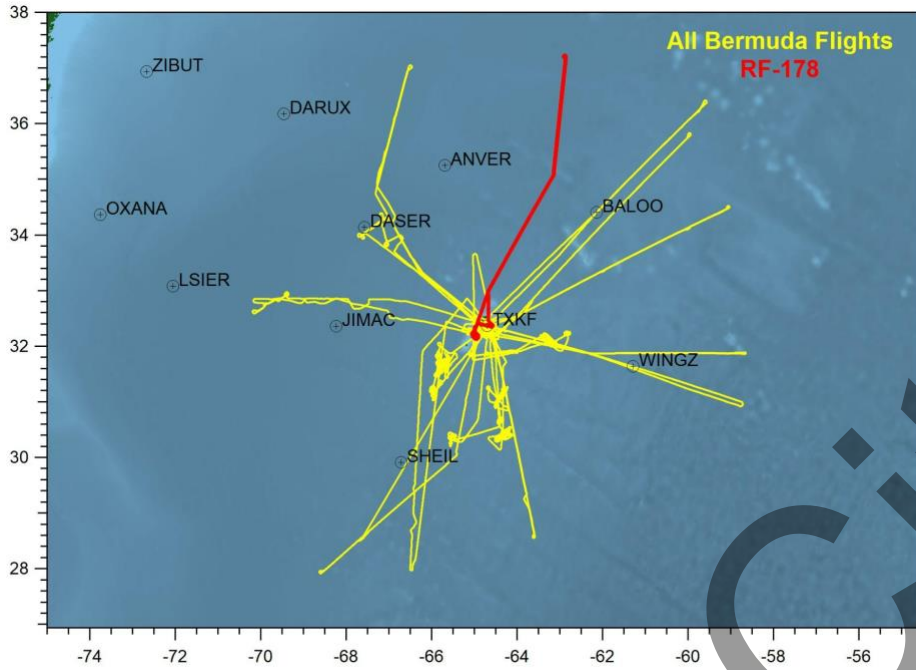
Flight scientist report ():

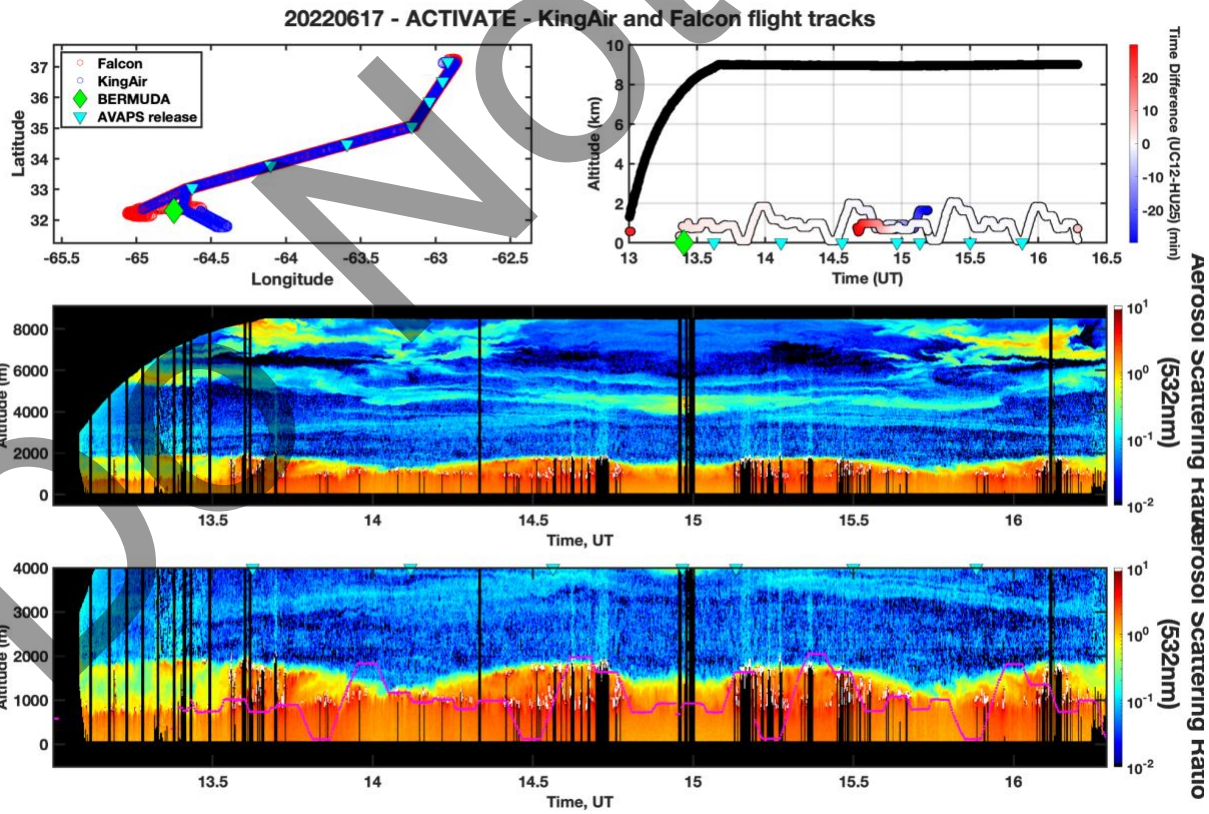
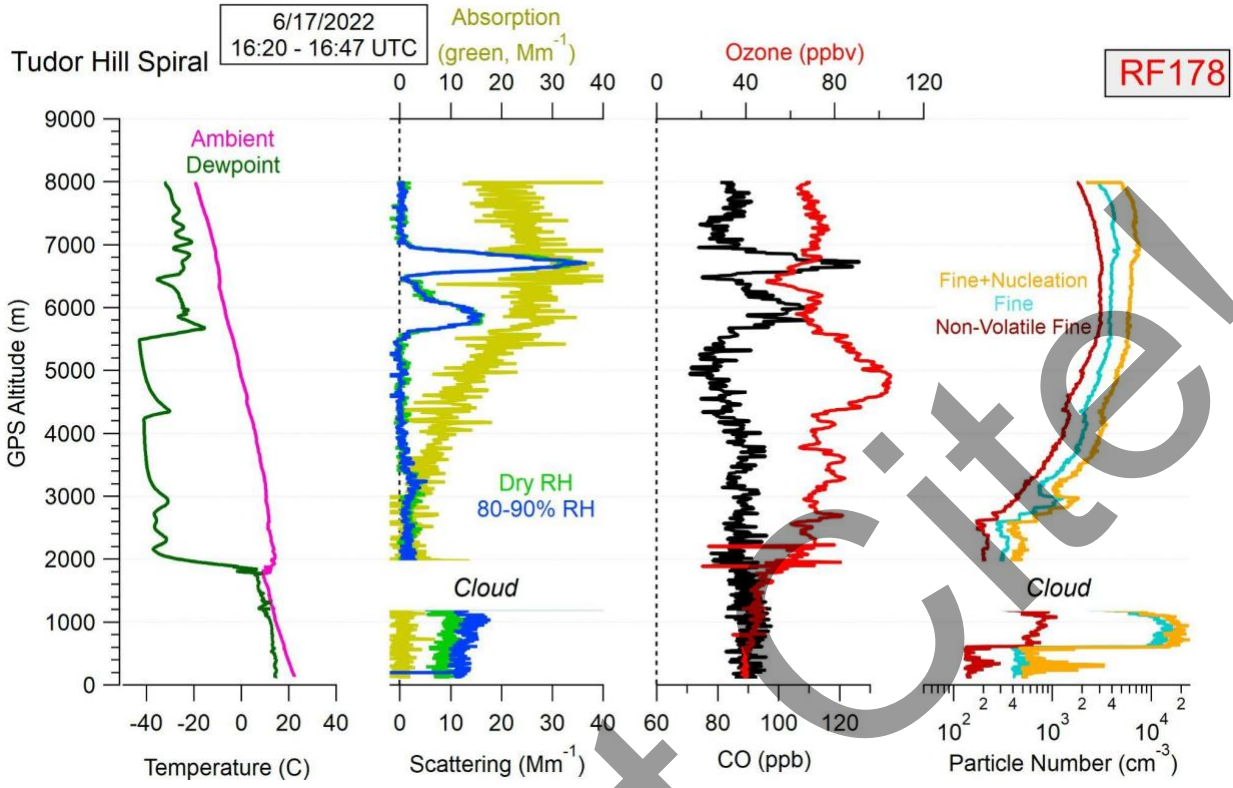
Falcon

Pilot report ():

Flight scientist report ():

Do Not Cite!



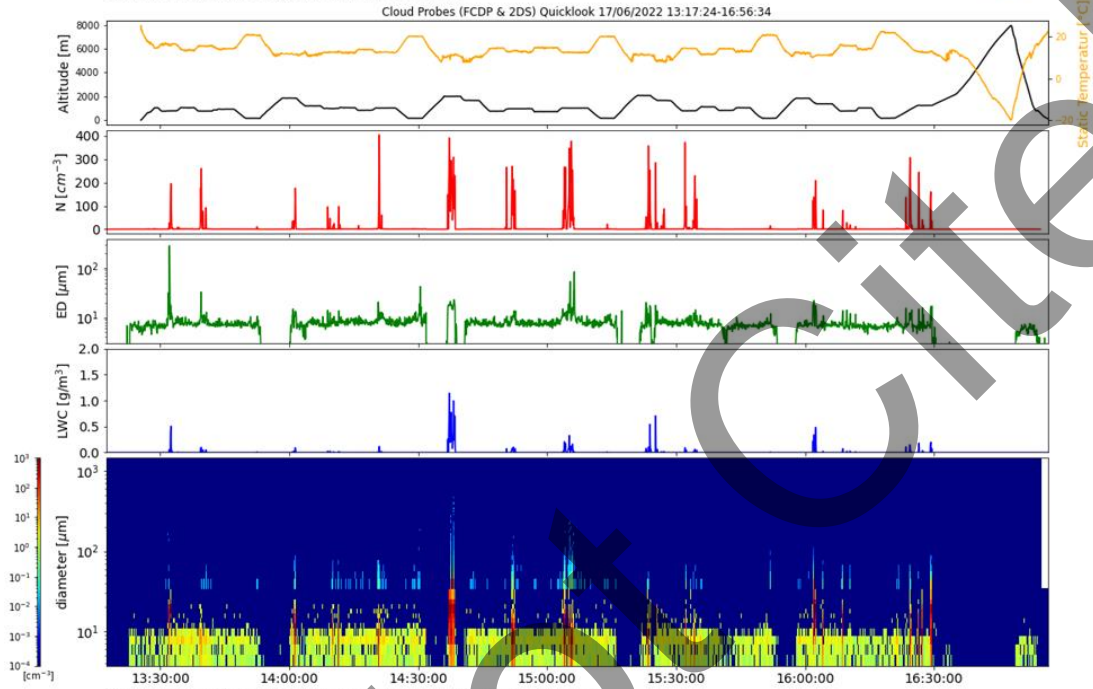


Do Not Cite!

Quicklook ACTIVATE Cloud Probes (FCDP & 2DS) Quicklook

preliminary data, only for quicklook use

Simon Kirschler, Christiane Voigt, Richard Moore, Ewan Crosbie



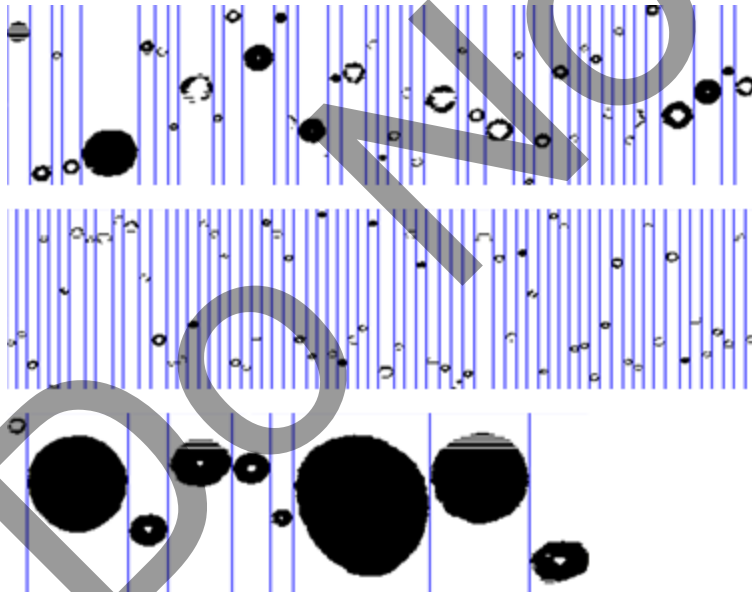
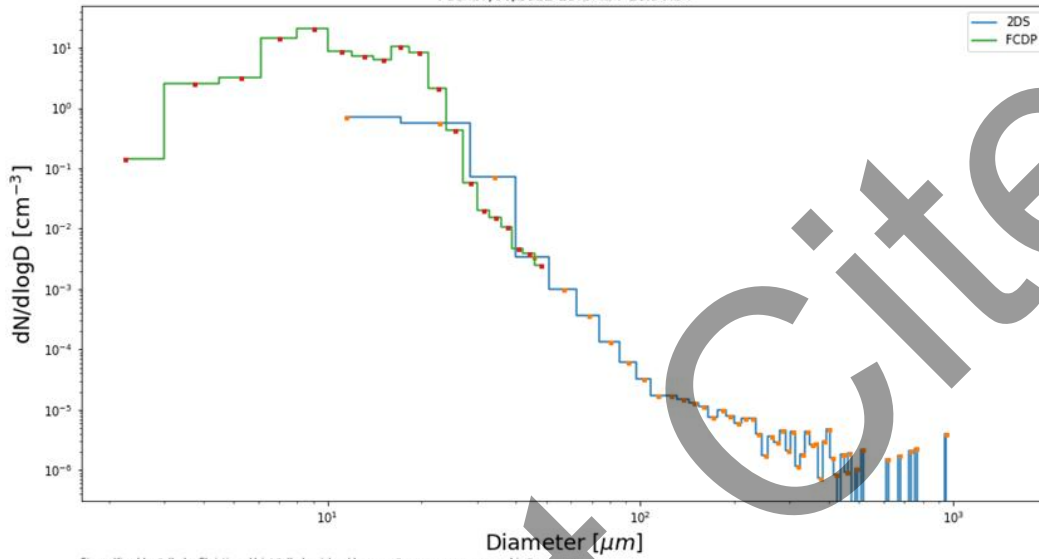
Simon.Kirschler@dlr.de, Christiane.Voigt@dlr.de, richard.h.moore@nasa.gov, ewan.c.crosbie@nasa.gov

PSD ACTIVATE

preliminary data, only for quicklook use
Simon Kirschler, Christiane Voigt, Richard Moore, Ewan Crosbie

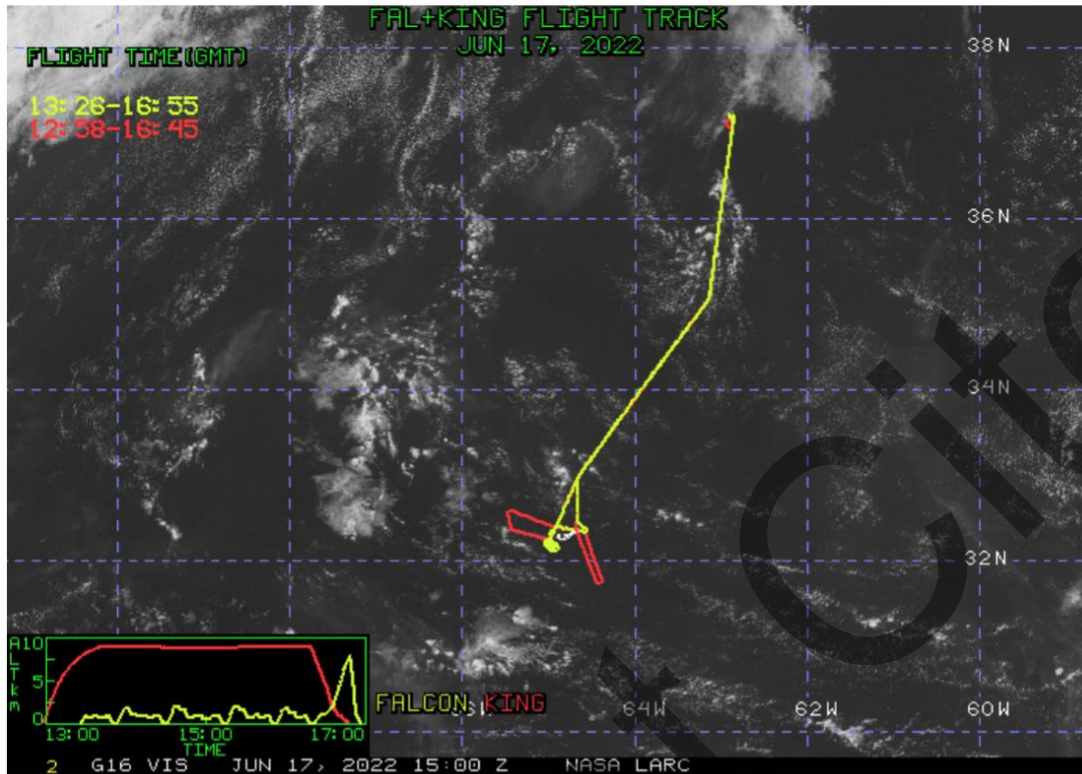


PSD 17/06/2022 13:17:24-16:56:34

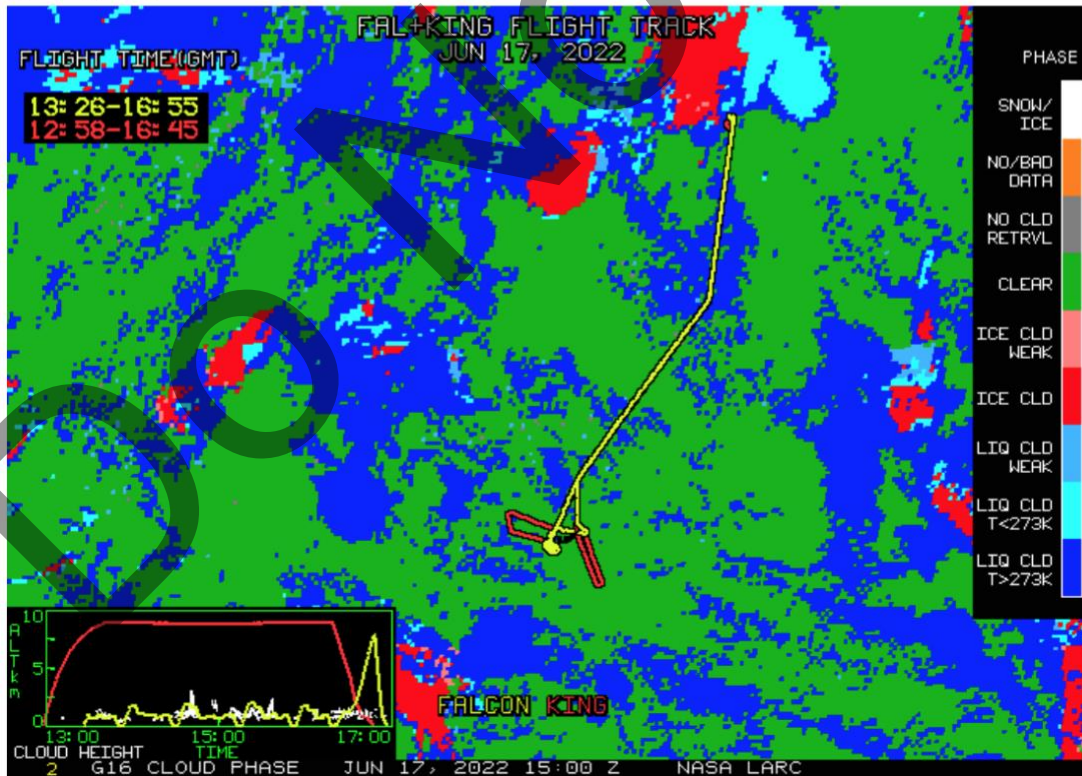


Only pure liquid clouds with Precip.

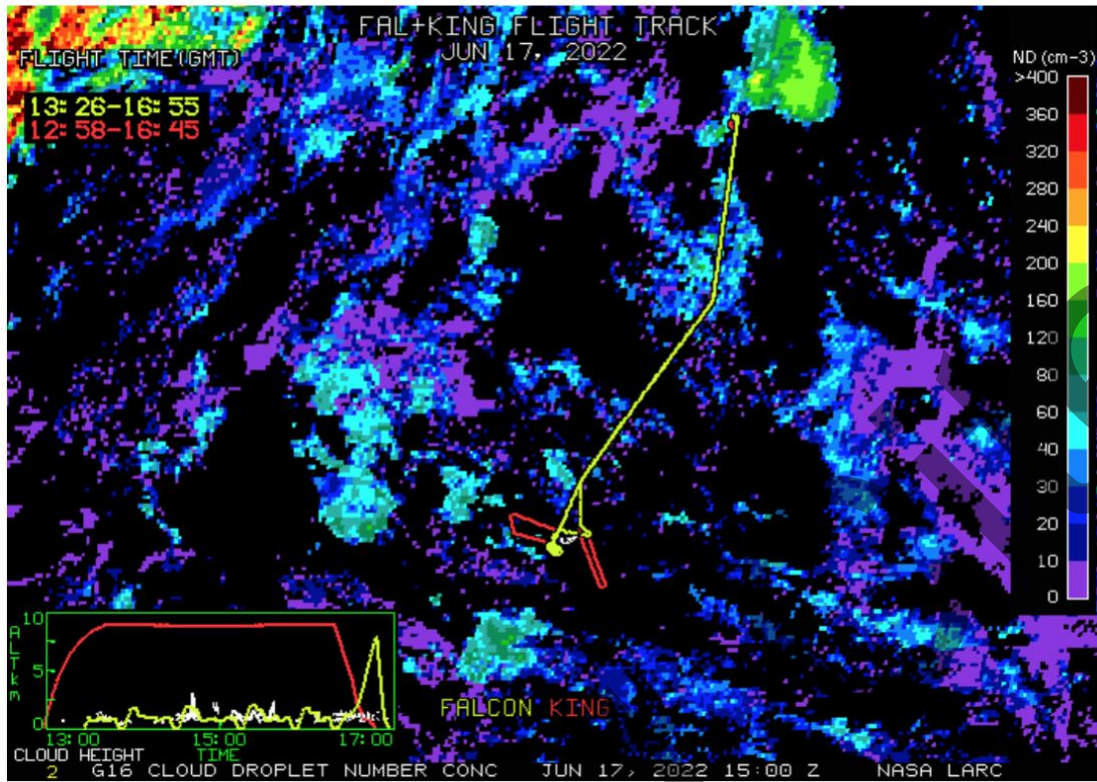
NASA-LaRC Clouds Group GOES-16 Quicklook Images for Flight 178, 15:00 UTC Jun 17, 2022
Visible Image



Cloud Phase



Cloud Droplet Number Concentration (cm-3)



Cloud-Top Height (Kft-ASL)

