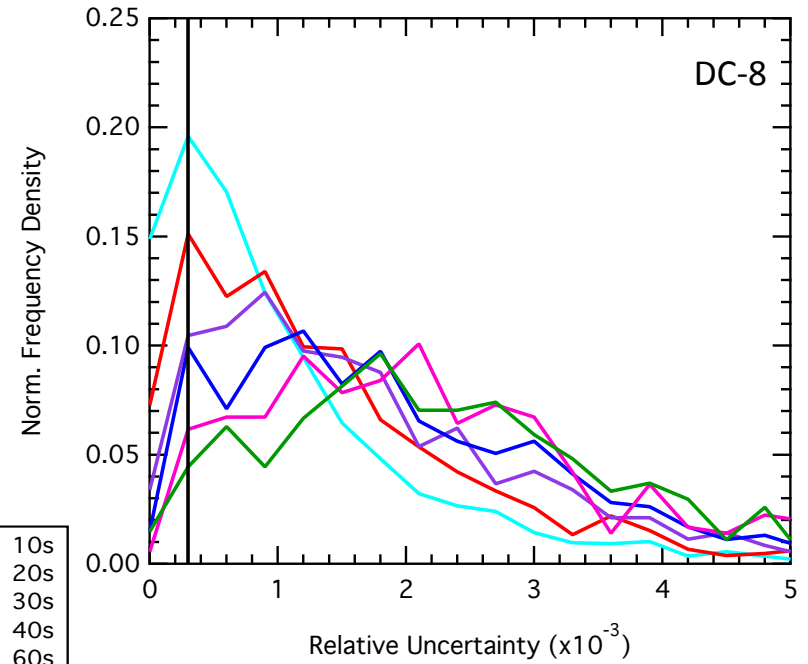
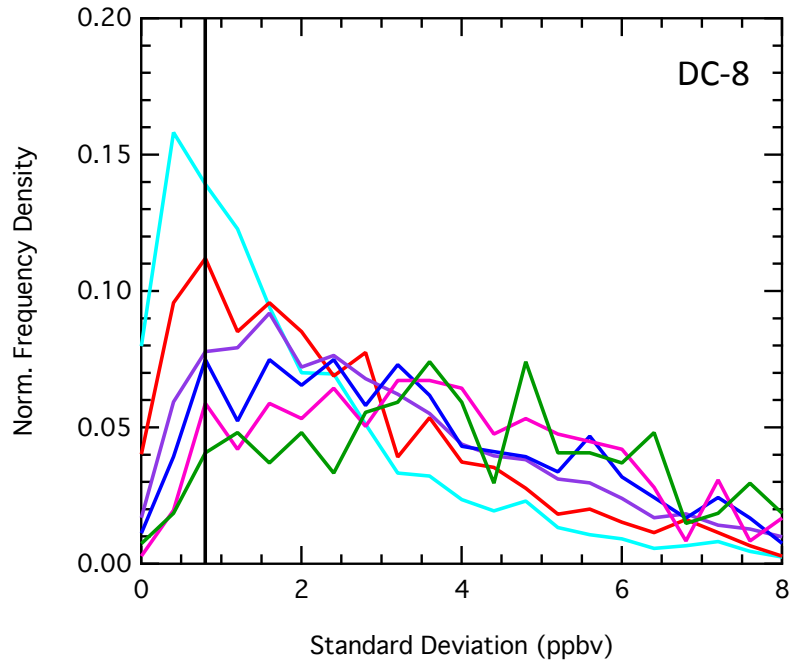
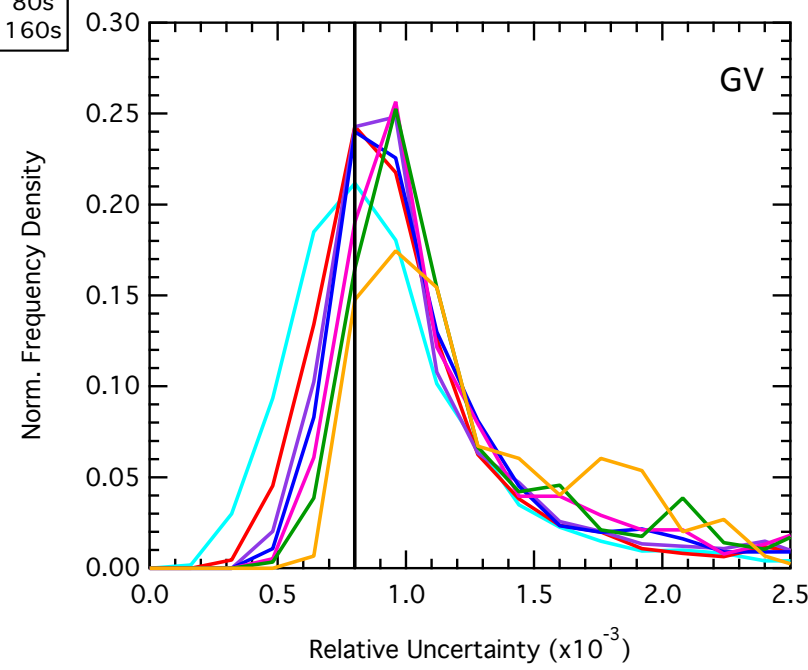
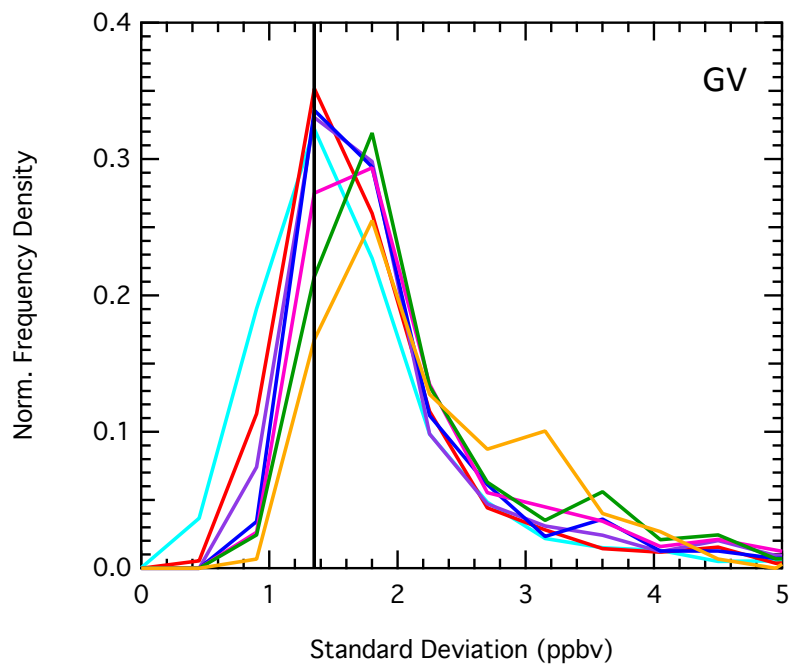


CH₄

05/25/12

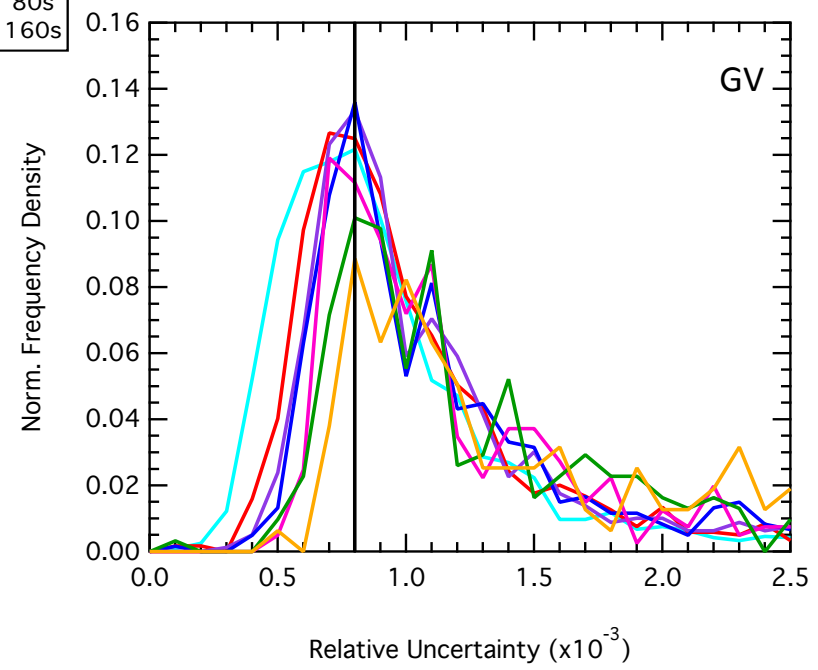
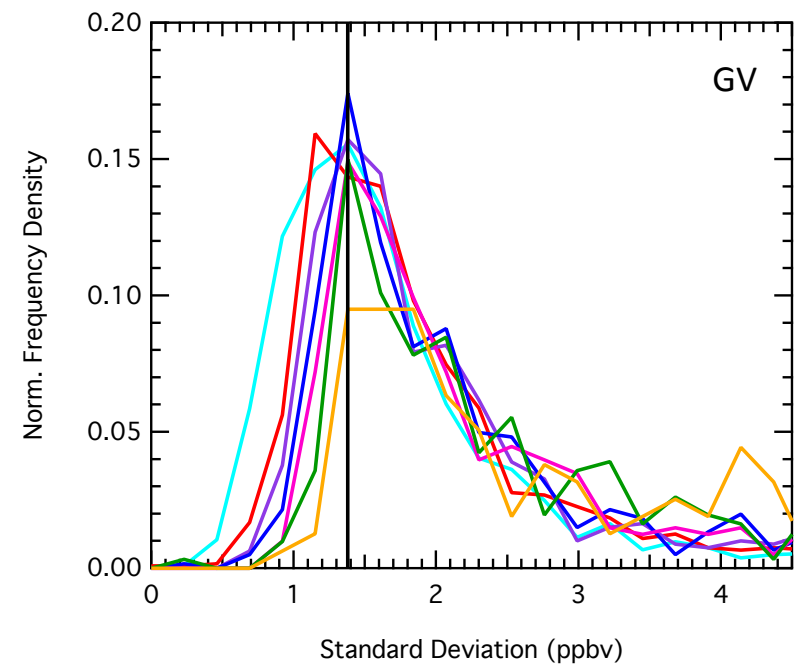
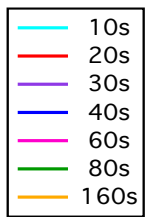
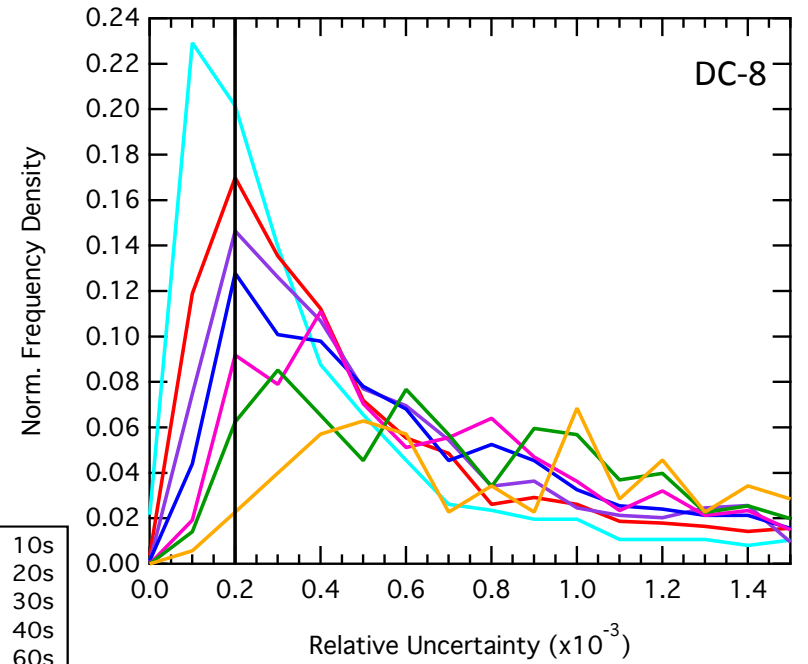
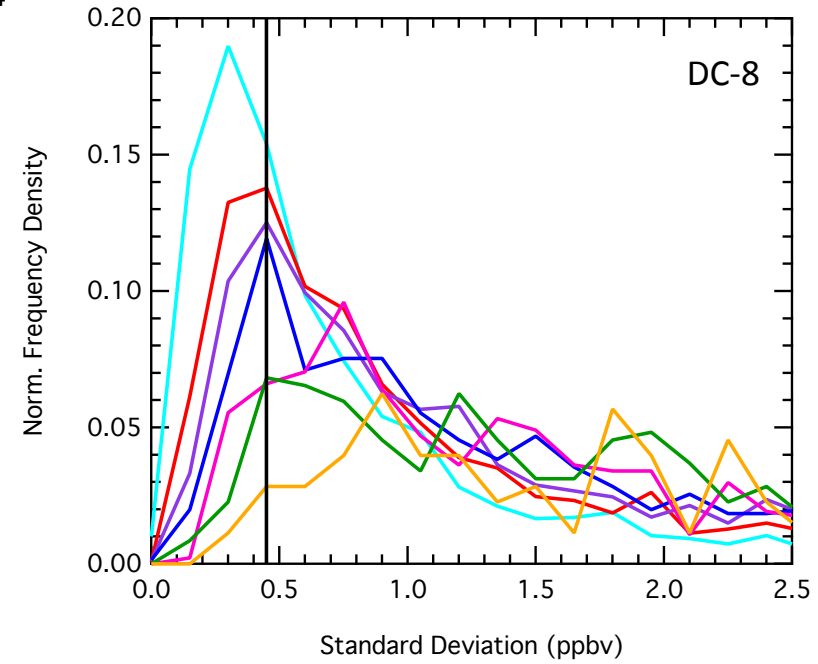


- 10s
- 20s
- 30s
- 40s
- 60s
- 80s
- 160s



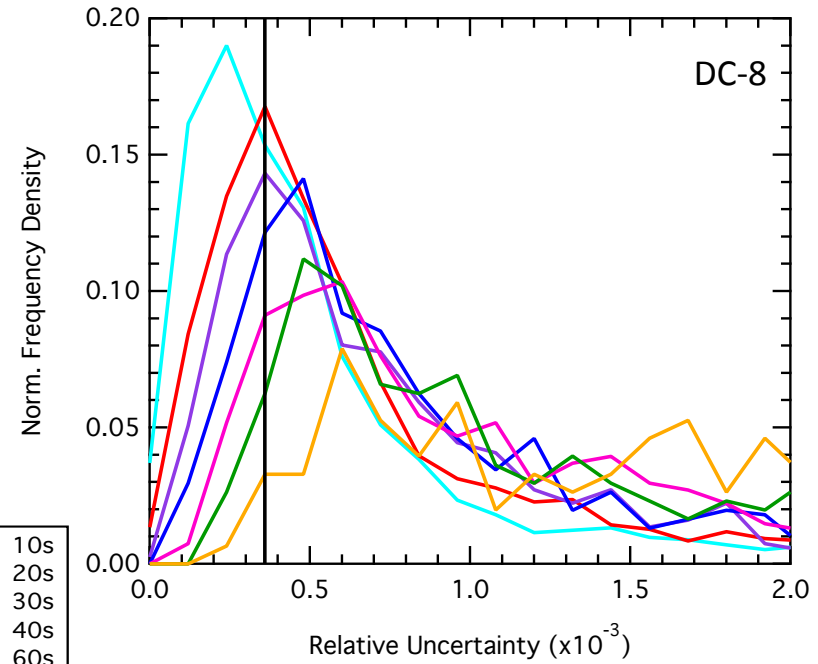
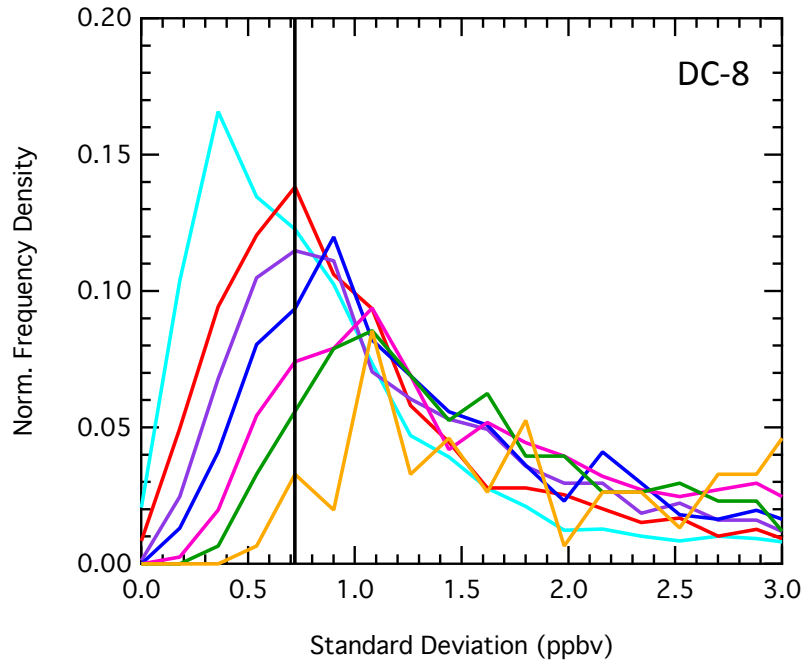
CH₄

05/30/12

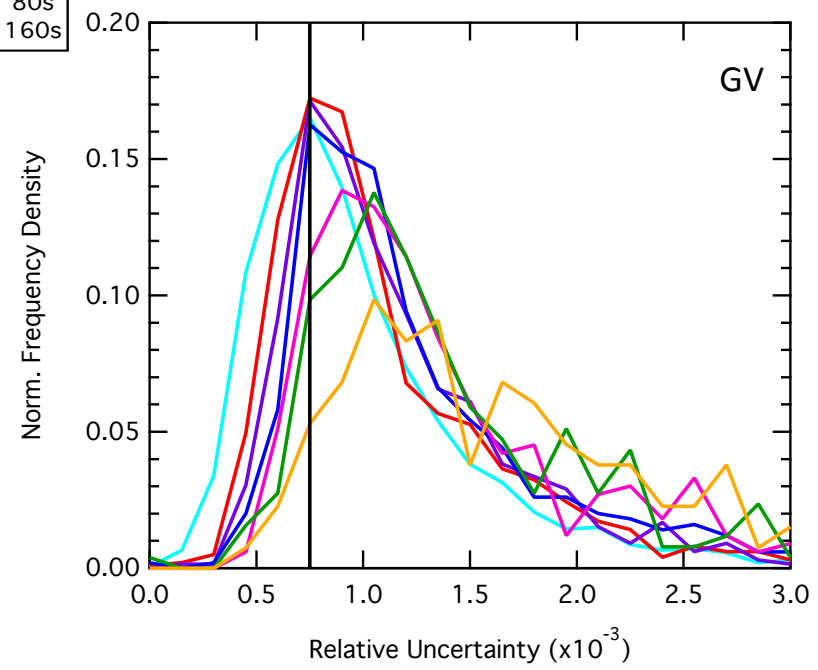
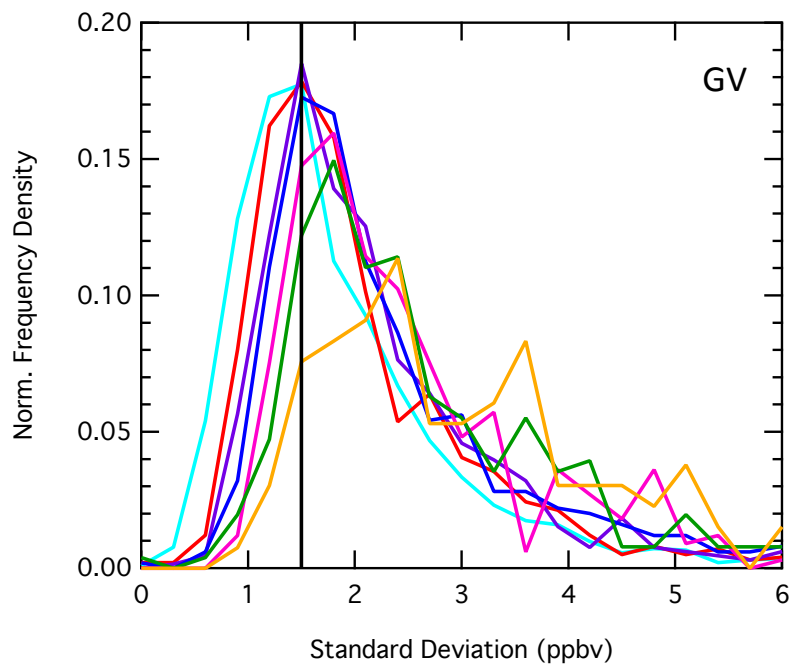


CH₄

06/01/12

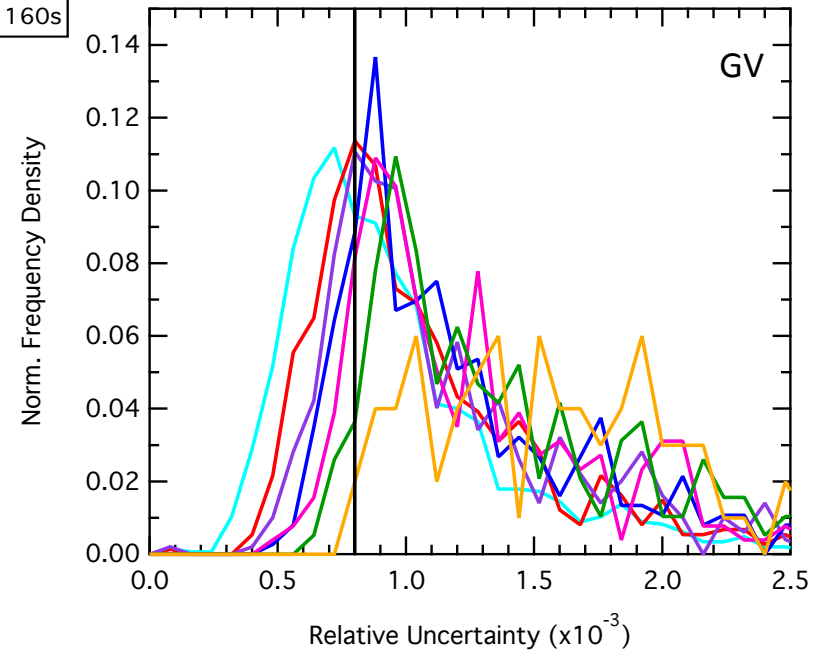
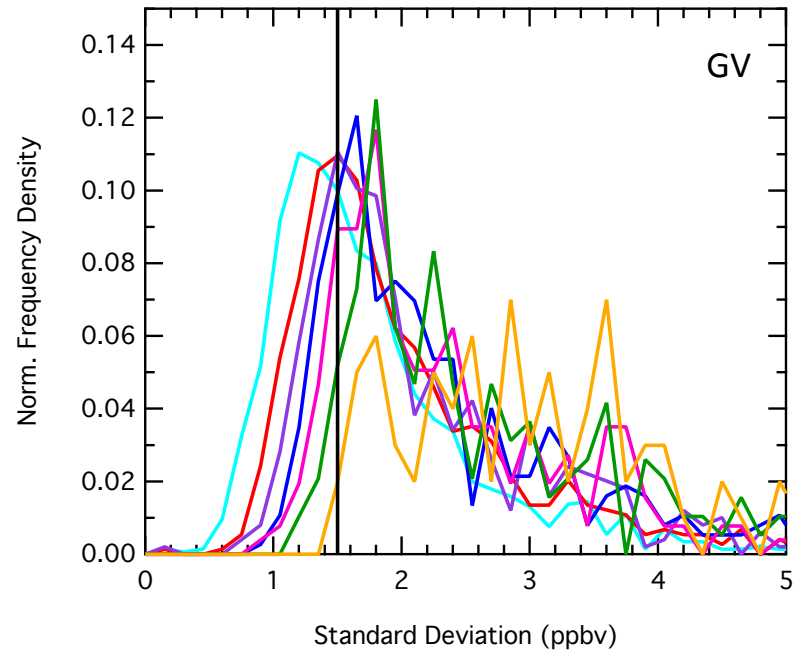
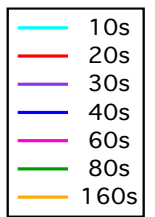
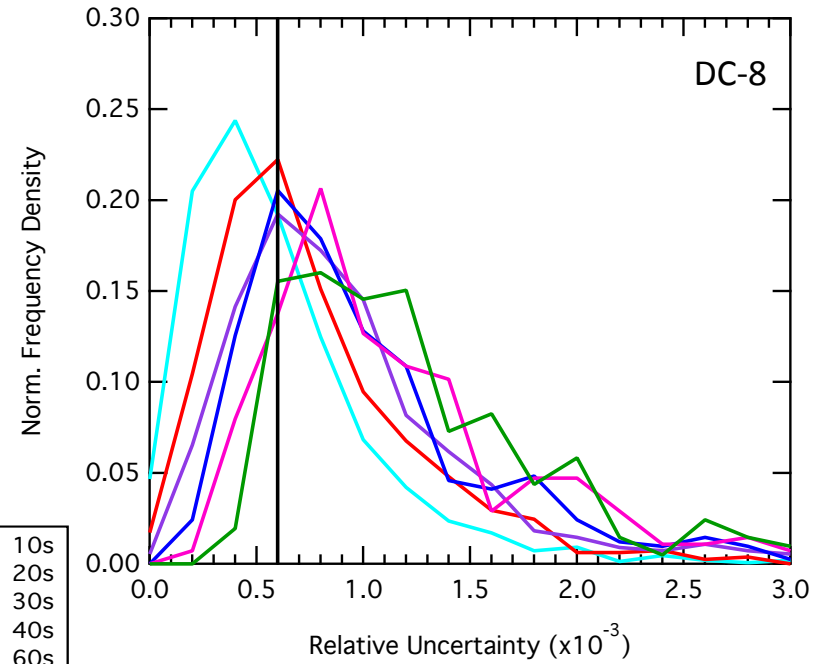
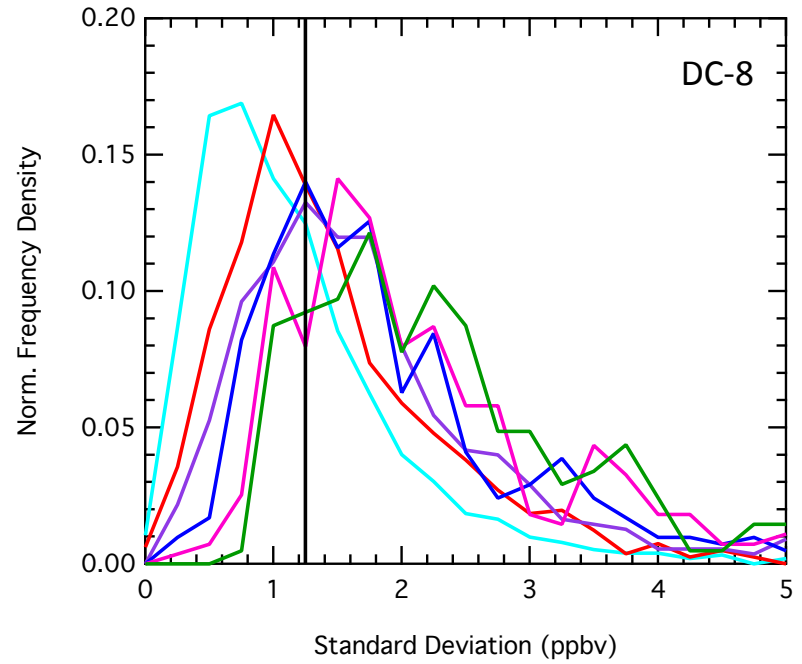


- 10s
- 20s
- 30s
- 40s
- 60s
- 80s
- 160s



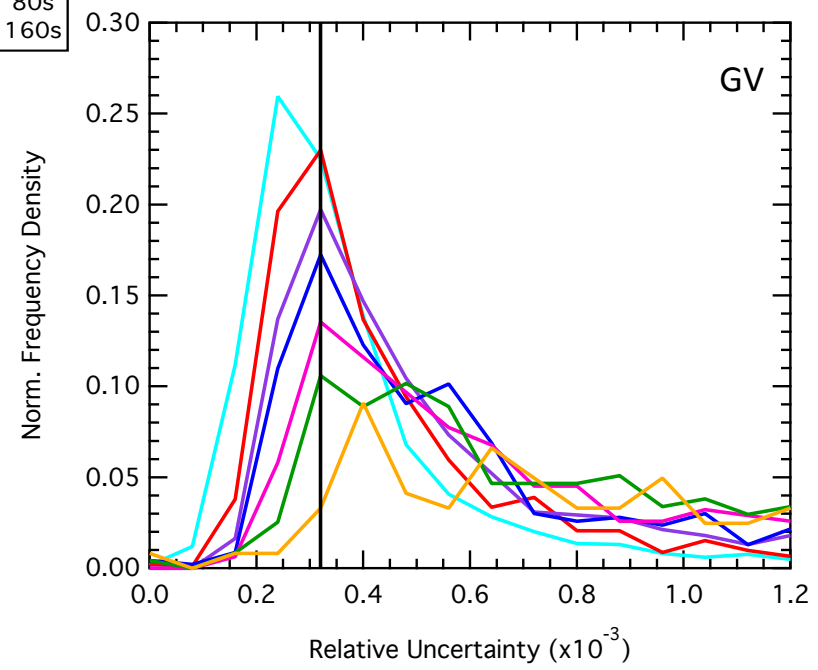
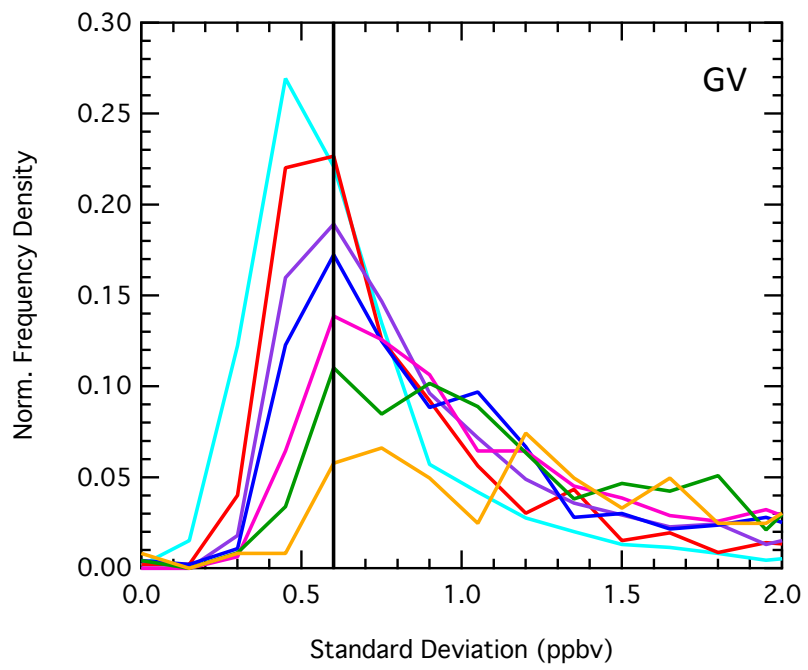
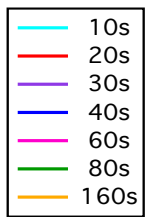
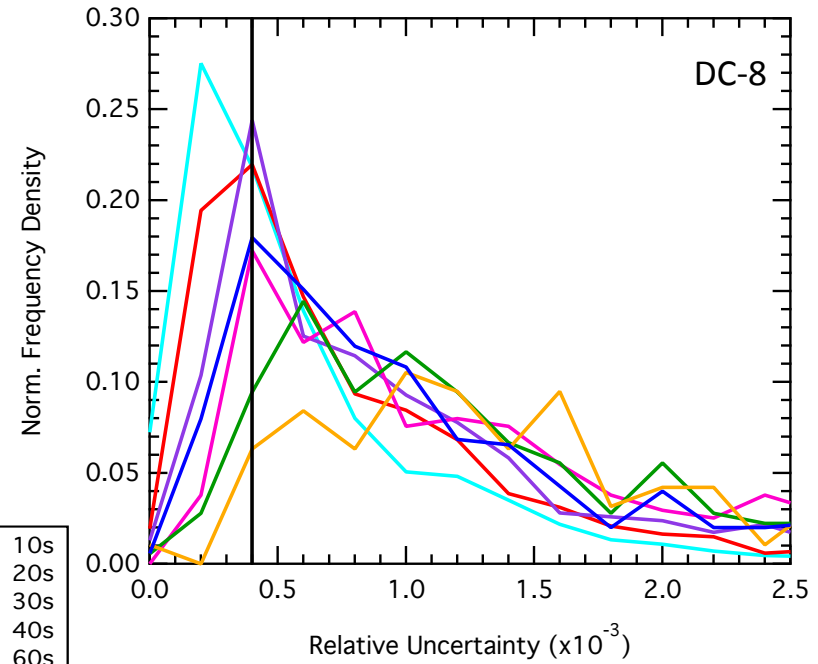
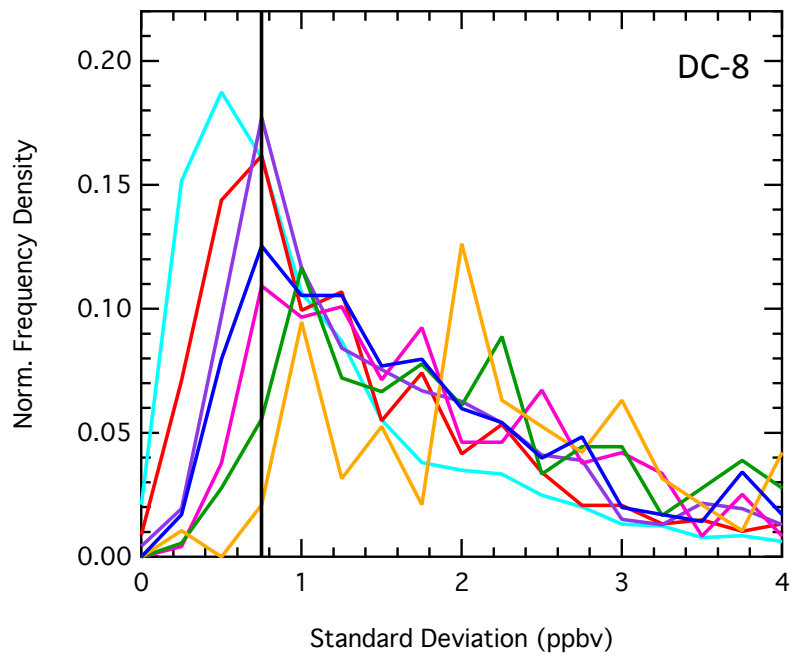
CH₄

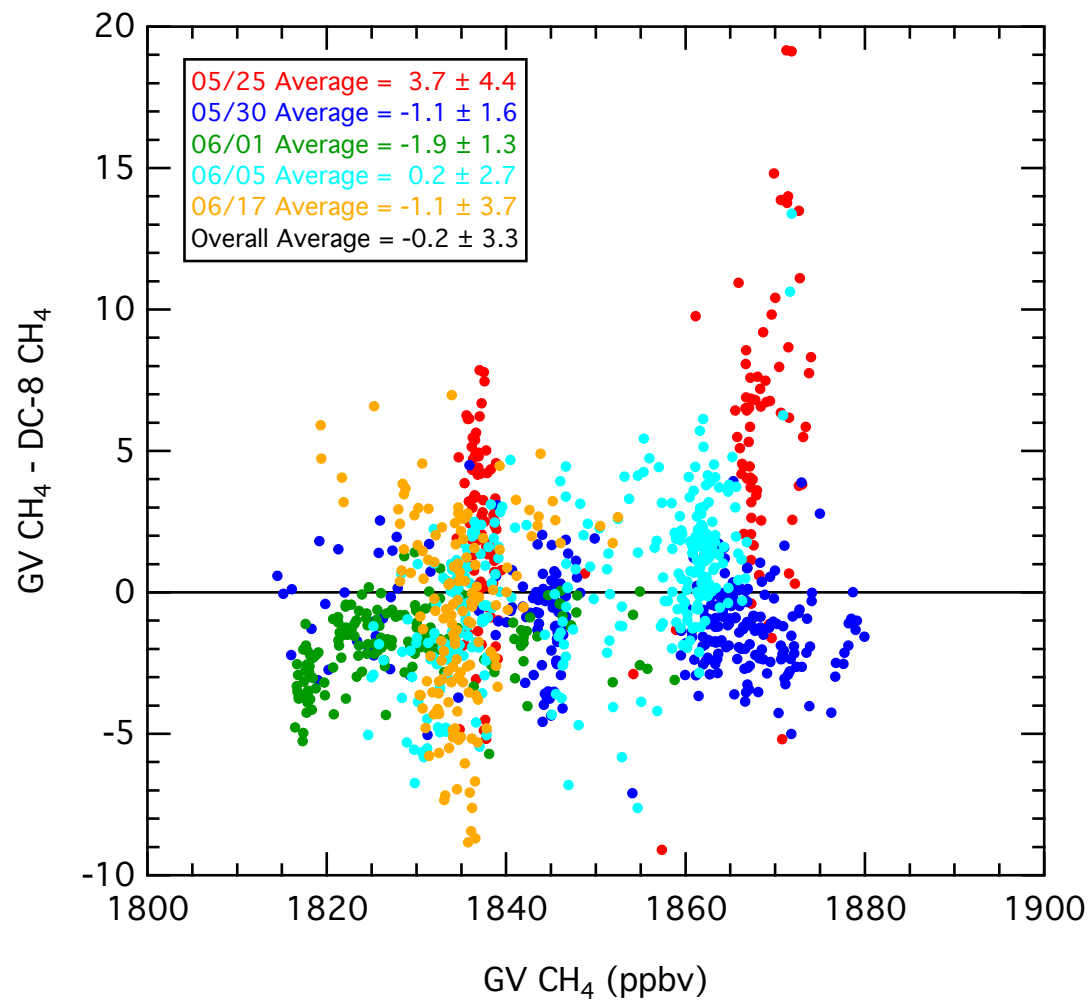
06/05/12



CH₄

06/17/12





IEIP Analysis Results: Absolute Precision

Flight	Platform	IEIP Precision (ppbv)	Expected Variability (ppbv)	Observed Variability (ppbv)	Adjusted Precision (ppbv)
05/25	DC-8	0.8	1.569	4.405	2.246
	GV	1.35			3.790
05/30	DC-8	0.45	1.452	1.602	0.497
	GV	1.38			1.523
06/01	DC-8	0.72	1.664	1.264	0.720
	GV	1.5			1.500
06/05	DC-8	1.25	1.953	2.697	1.726
	GV	1.5			2.072
06/17	DC-8	0.75	0.960	3.699	2.888
	GV	0.6			2.311

- Note graphs displayed have different axes.
- IEIP analyses are subjective.
- For more information on the Internal Estimate of Instrument Precision (IEIP) procedure refer to <http://www-air.larc.nasa.gov/TAbMEP.html>