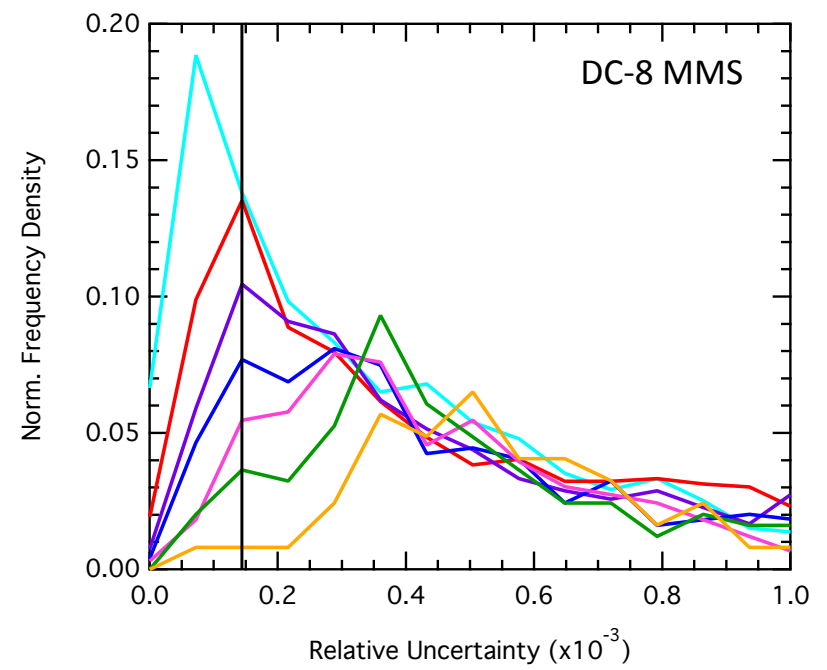
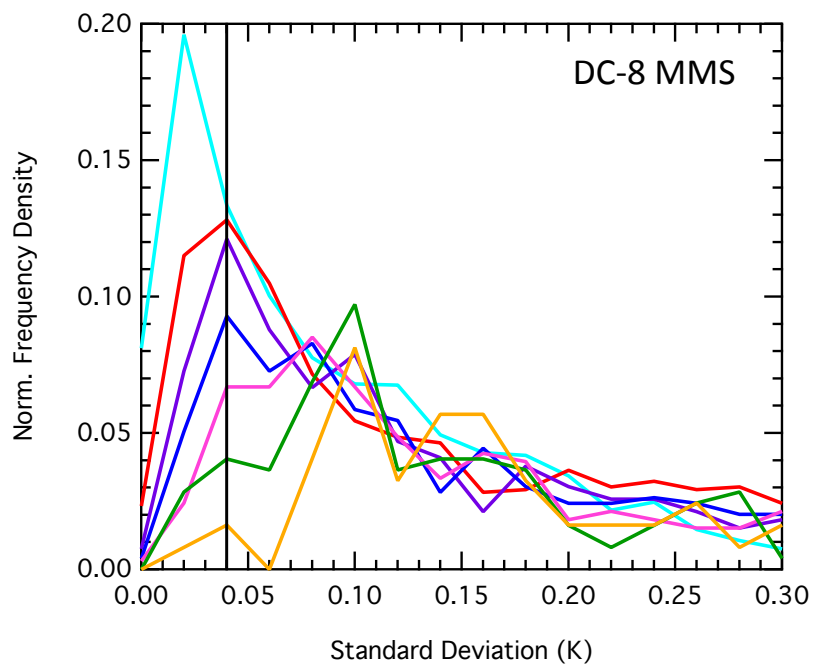
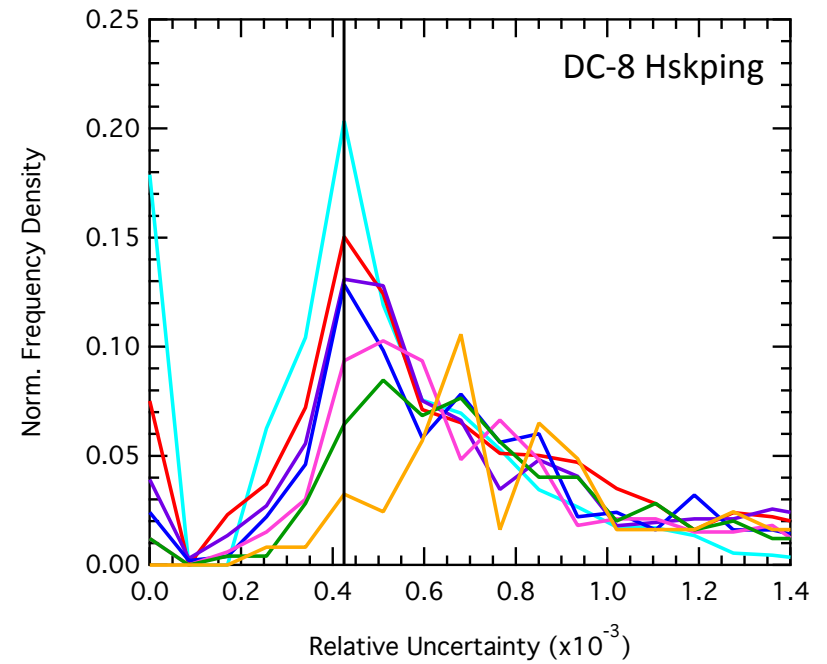
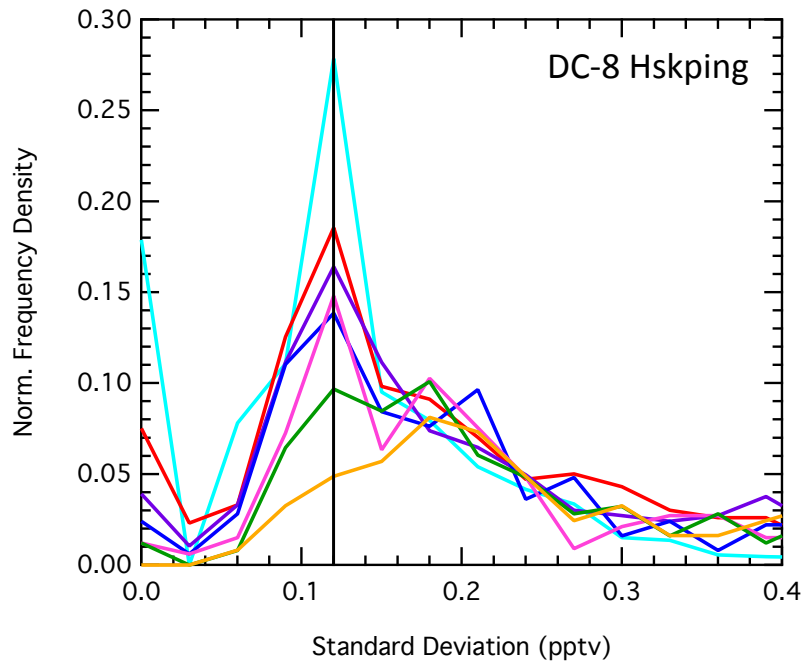
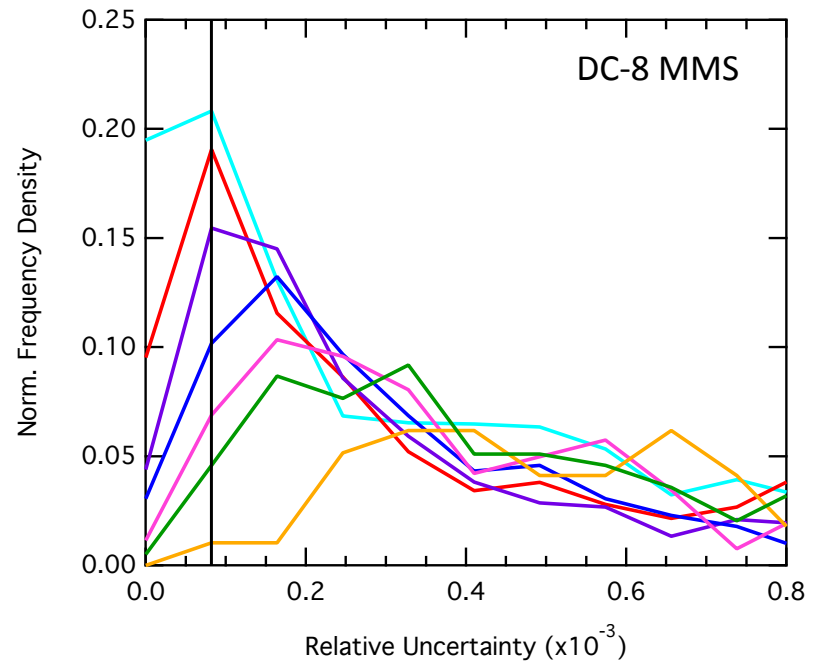
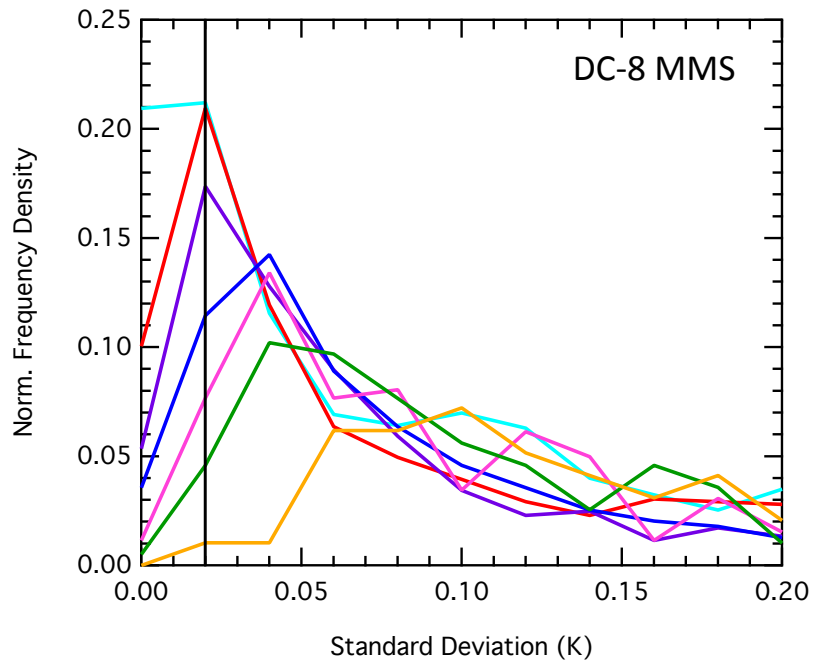
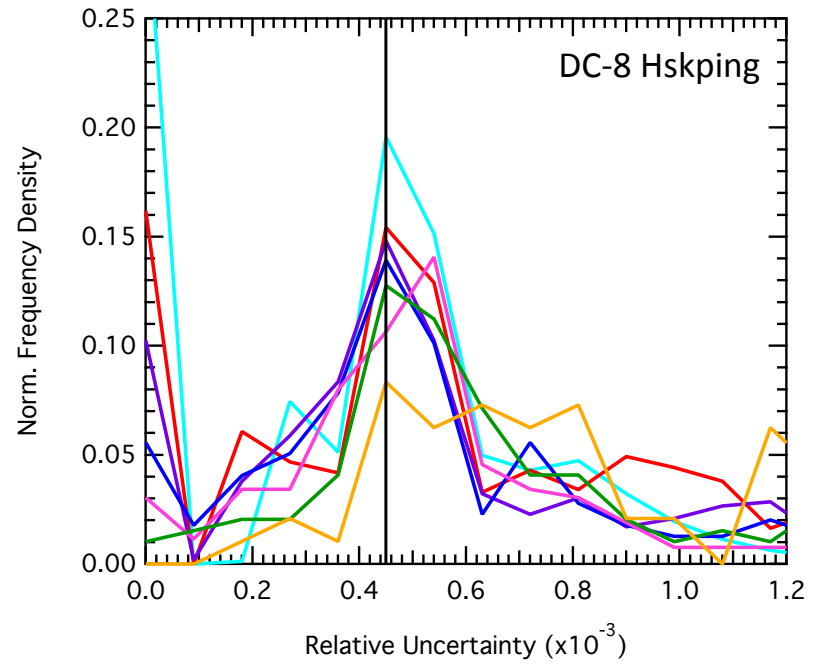
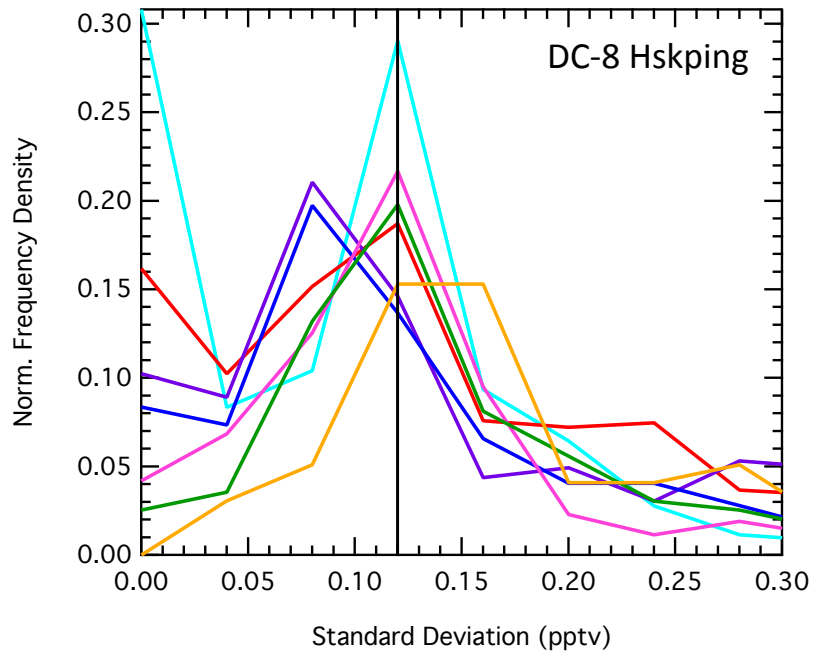
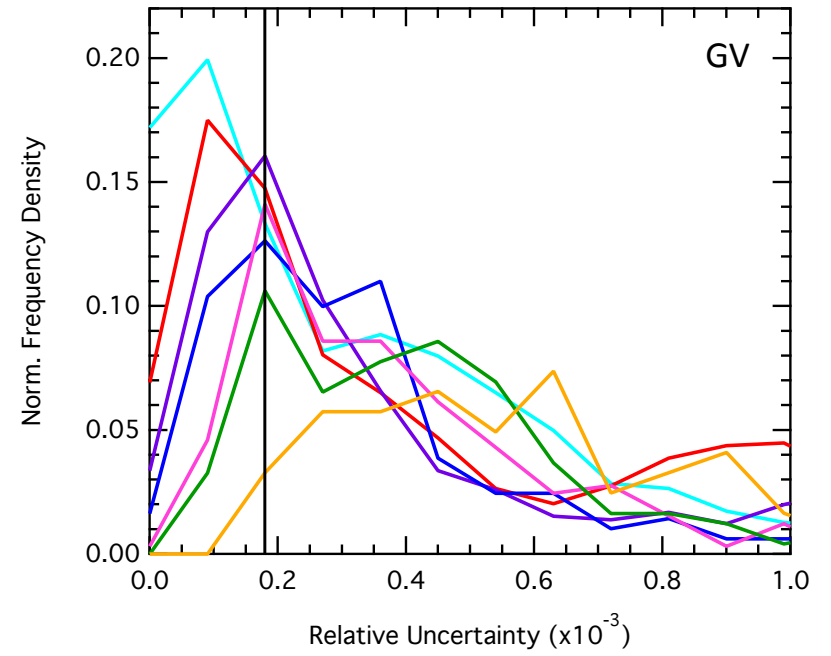
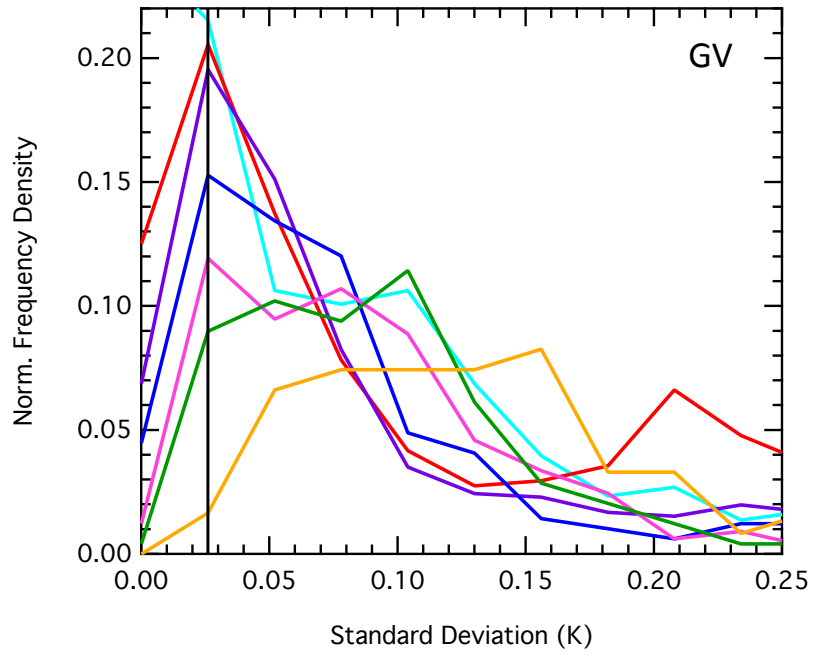


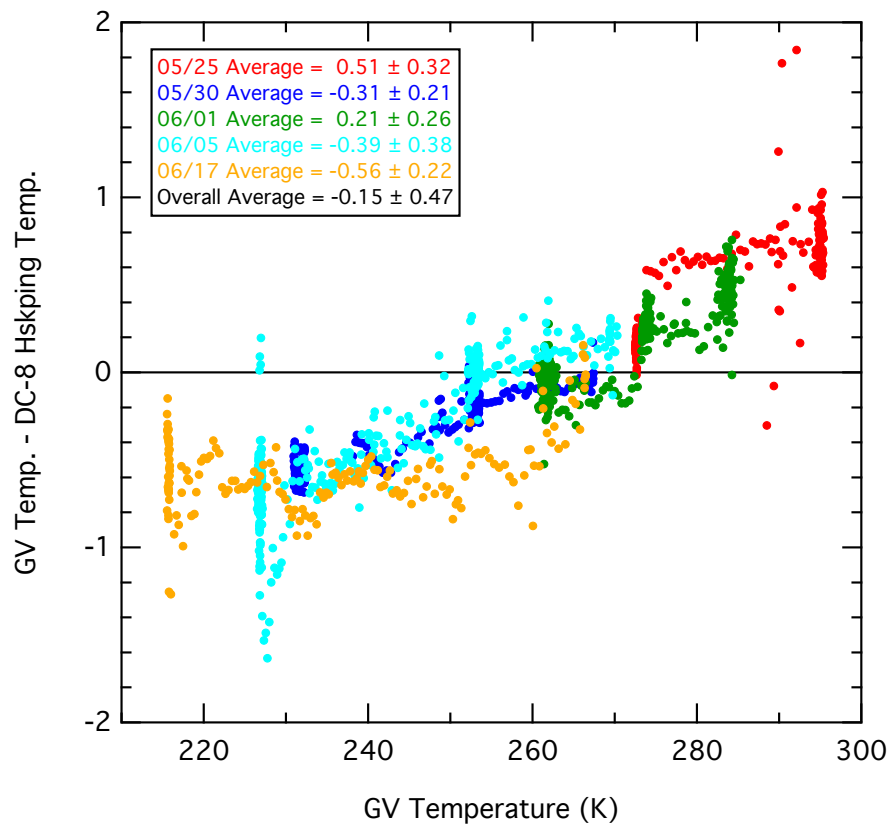
Temperature



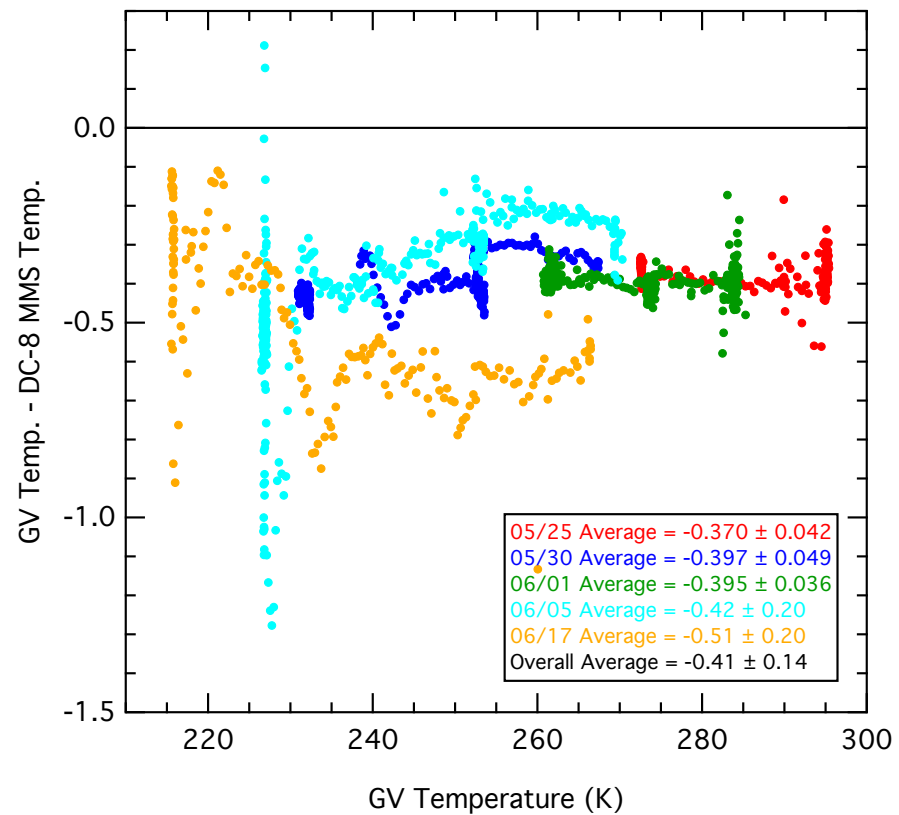




DC-8 Hskping



DC-8 MMS



IEIP Analysis Results: Absolute Precision

Flight	Platform	IEIP Precision (K)	Expected Variability (K)	Observed Variability (K)	Adjusted Precision (K)
05/25	DC-8 Hskping	0.09	0.091	0.324	0.320
	GV	0.01			0.0356
05/30	DC-8 Hskping	0.1	0.103	0.213	0.207
	GV	0.024			0.0496
06/01	DC-8 Hskping	0.12	0.124	0.26	0.252
	GV	0.03			0.0629
06/05	DC-8 Hskping	0.12	0.122	0.384	0.378
	GV	0.022			0.0692
06/17	DC-8 Hskping	0.12	0.123	0.222	0.216
	GV	0.026			0.0469

- DC-8 Hskping data is reported every quarter degree.
- Note graphs displayed have different axes.
- IEIP analyses are subjective.
- For more information on the Internal Estimate of Instrument Precision (IEIP) procedure refer to <http://www-air.larc.nasa.gov/TAbMEP.html>

IEIP Analysis Results: Absolute Precision

Flight	Platform	IEIP Precision (K)	Expected Variability (K)	Observed Variability (K)	Adjusted Precision (K)
05/25	DC-8 MMS	0.035	0.0364	0.0421	0.040
	GV	0.01			0.012
05/30	DC-8 MMS	0.035	0.0424	0.0486	0.040
	GV	0.024			0.028
06/01	DC-8 MMS	0.05	0.0583	0.0358	0.05
	GV	0.03			0.03
06/05	DC-8 MMS	0.04	0.0457	0.196	0.172
	GV	0.022			0.094
06/17	DC-8 MMS	0.02	0.0328	0.2	0.122
	GV	0.026			0.159

- Note graphs displayed have different axes.
- IEIP analyses are subjective.
- For more information on the Internal Estimate of Instrument Precision (IEIP) procedure refer to <http://www-air.larc.nasa.gov/TAbMEP.html>