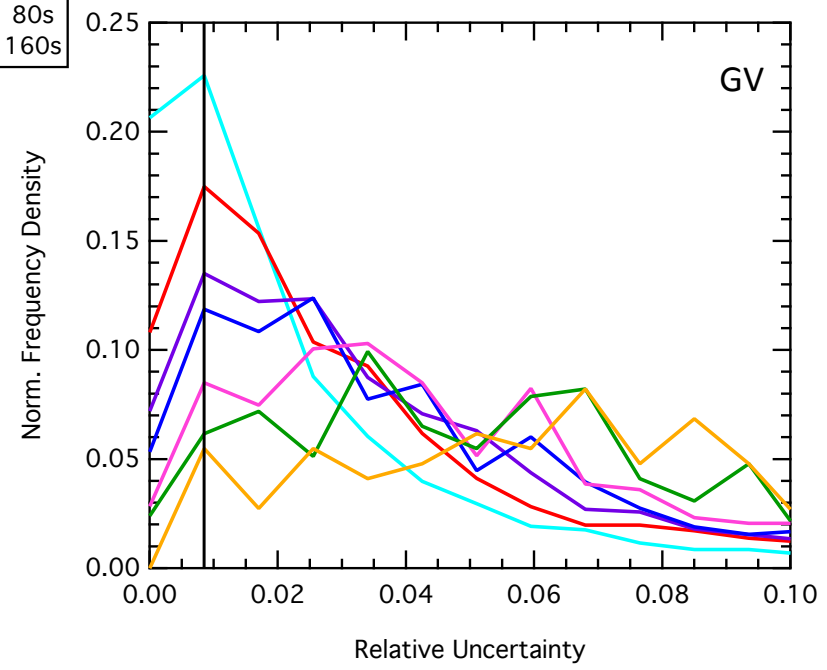
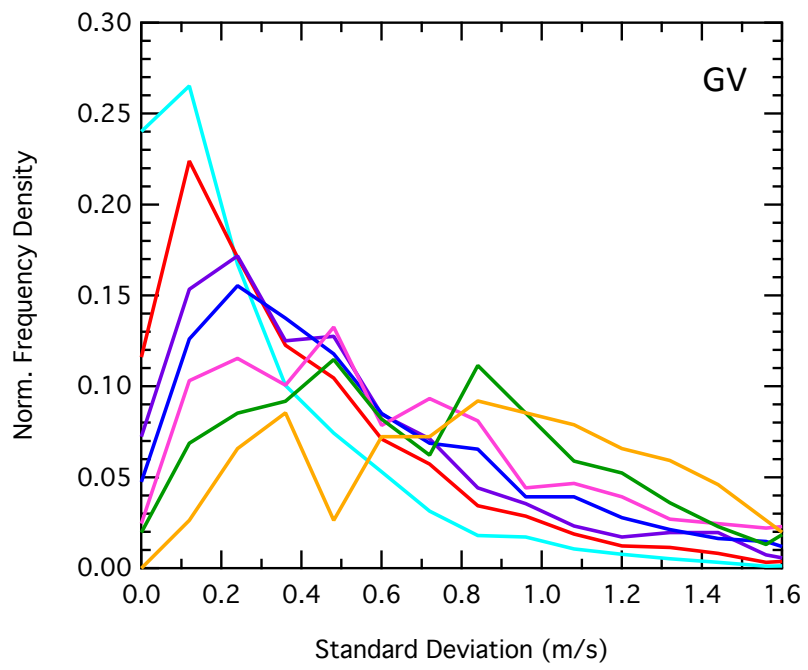
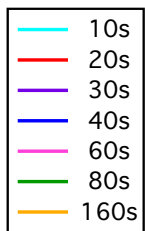
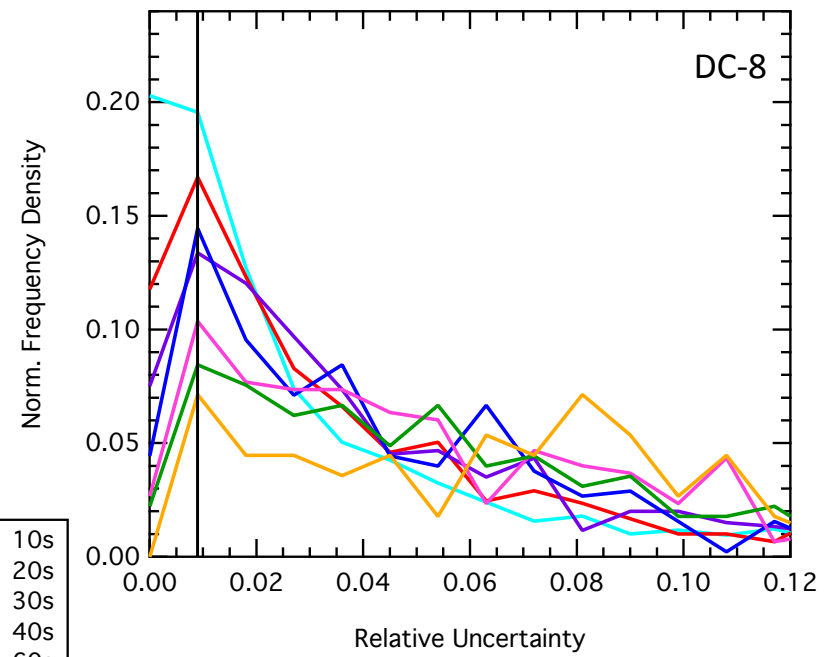
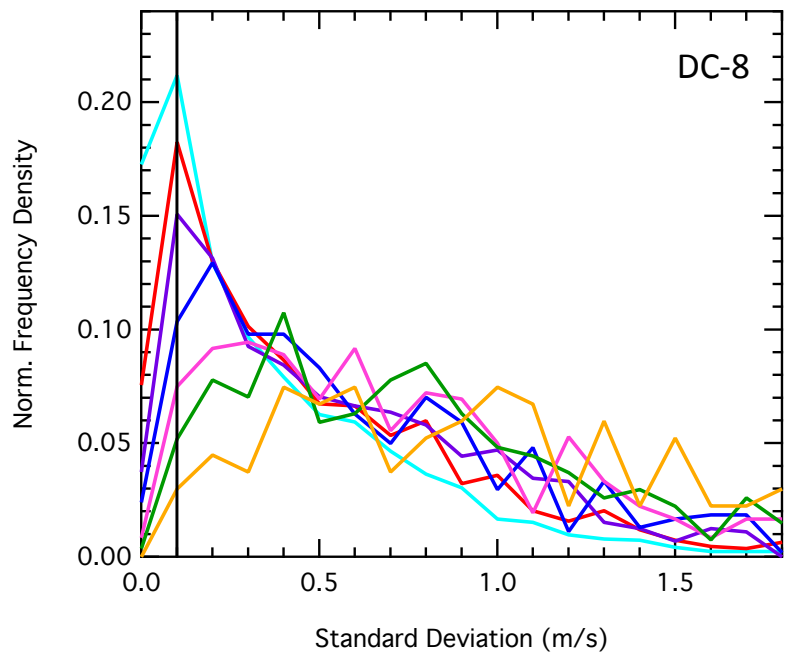
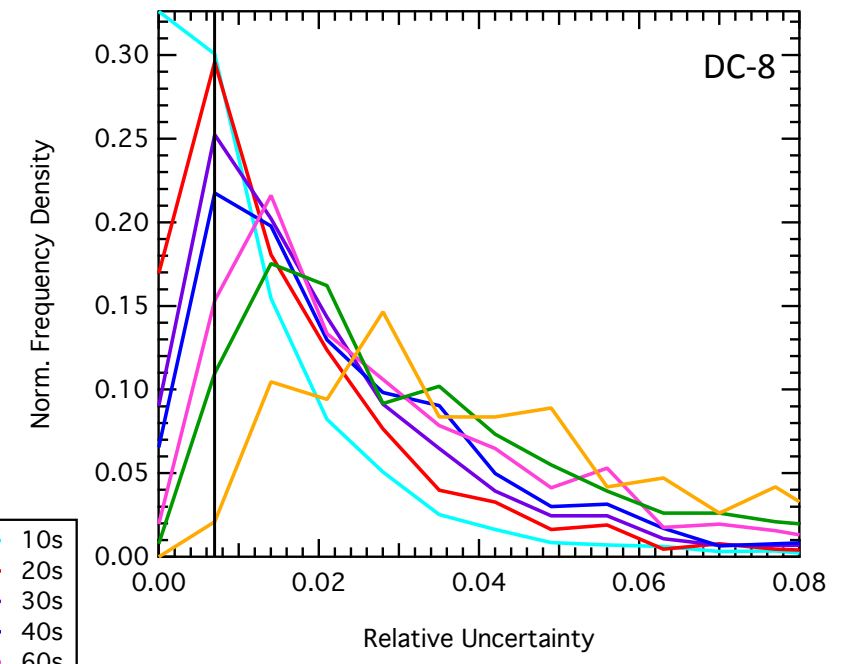
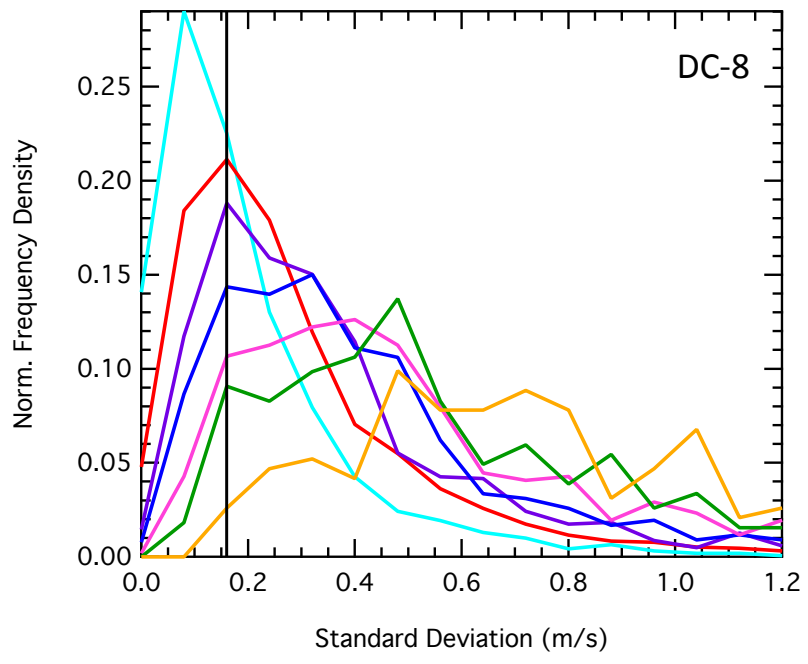


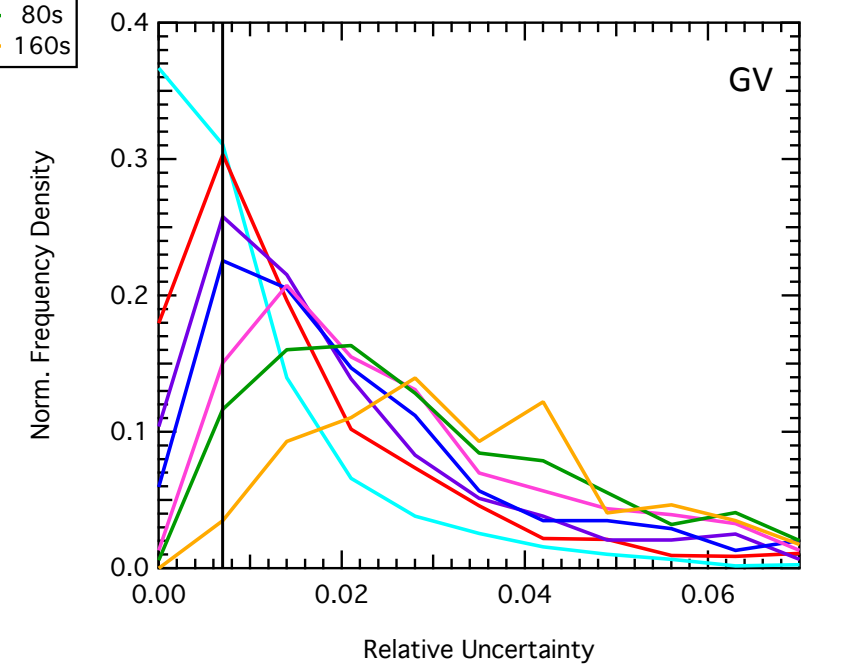
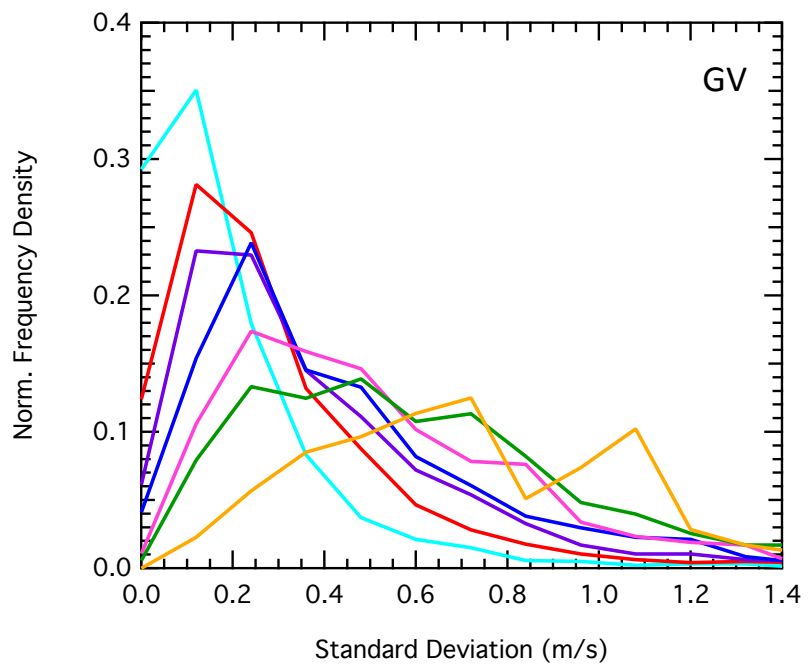
U

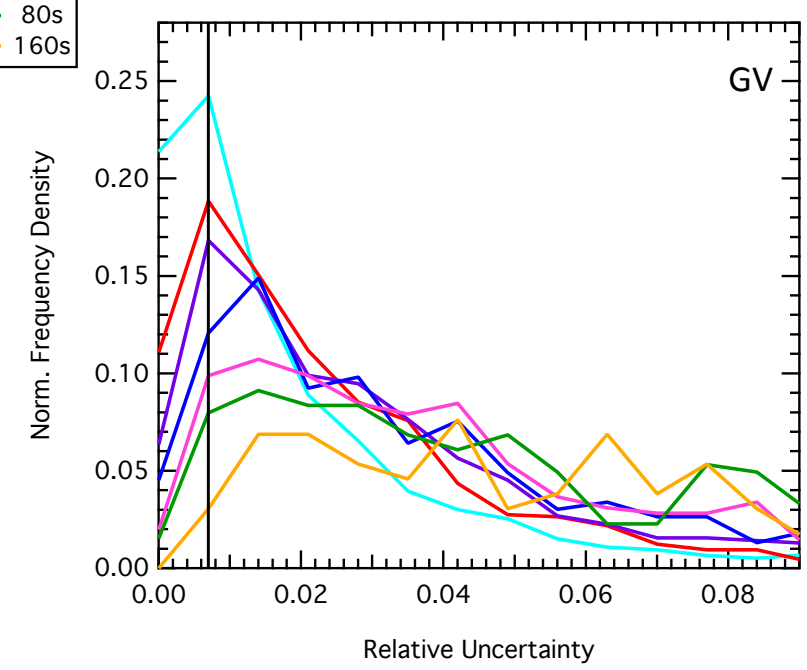
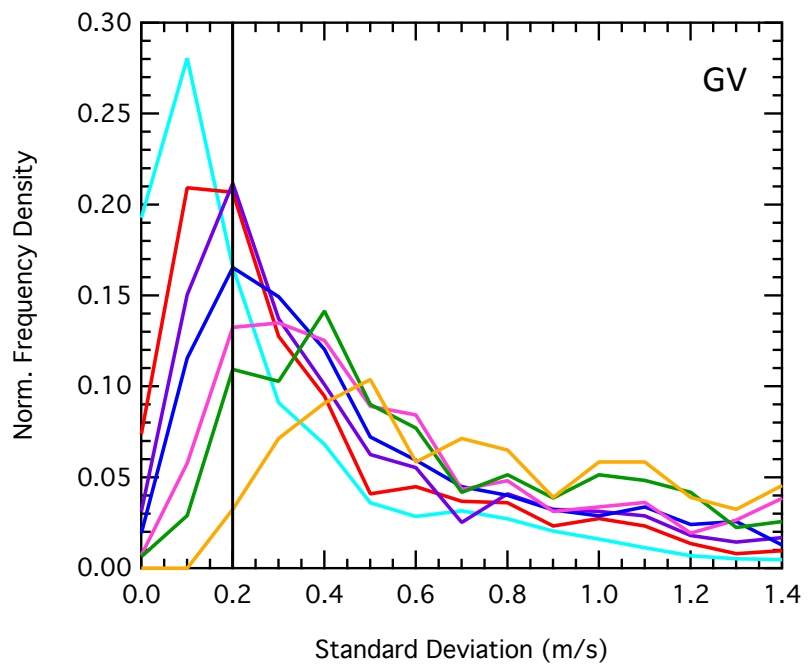
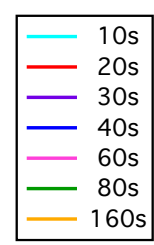
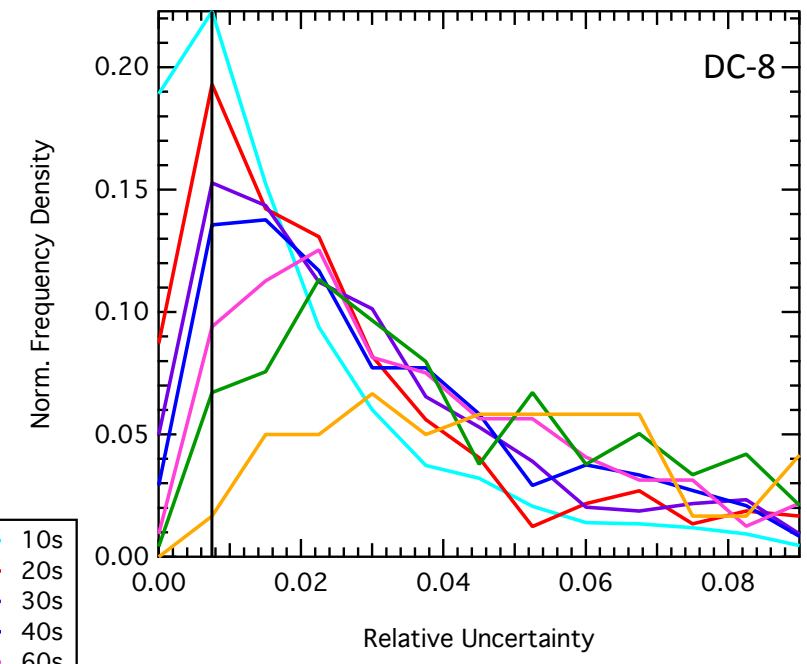
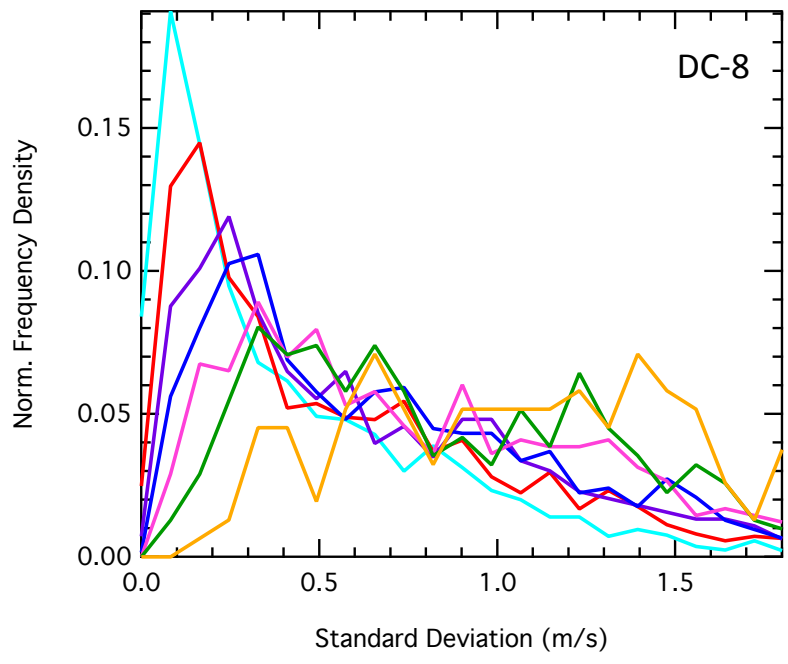


U

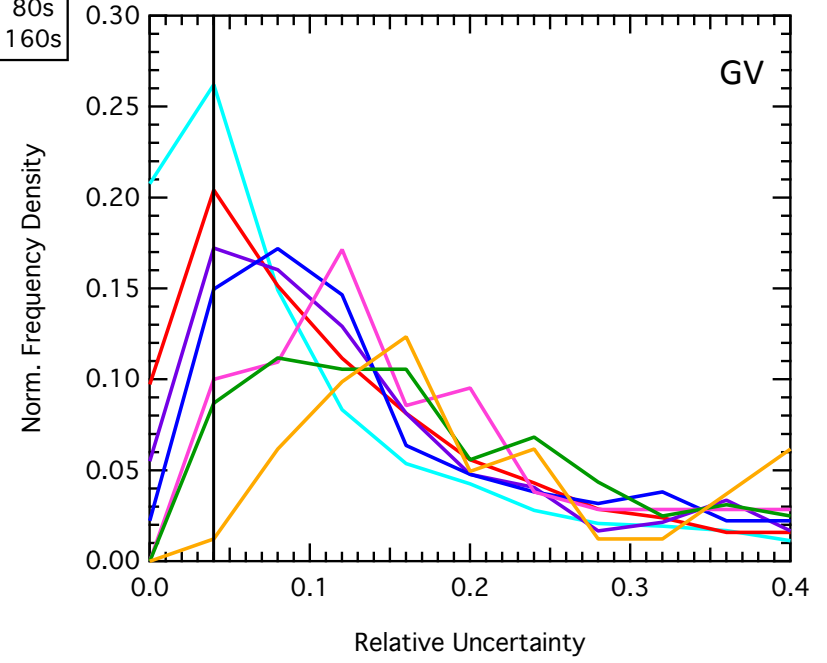
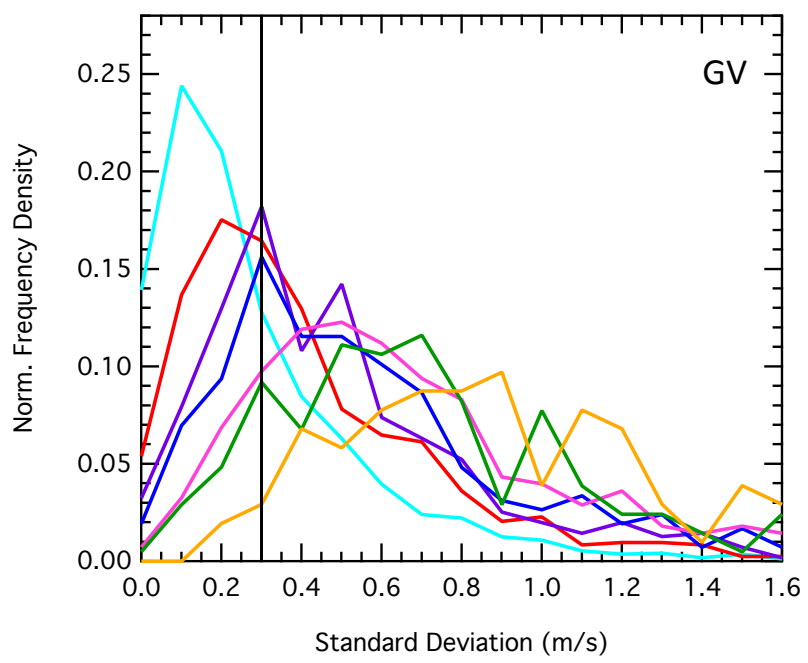
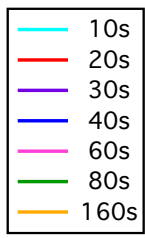
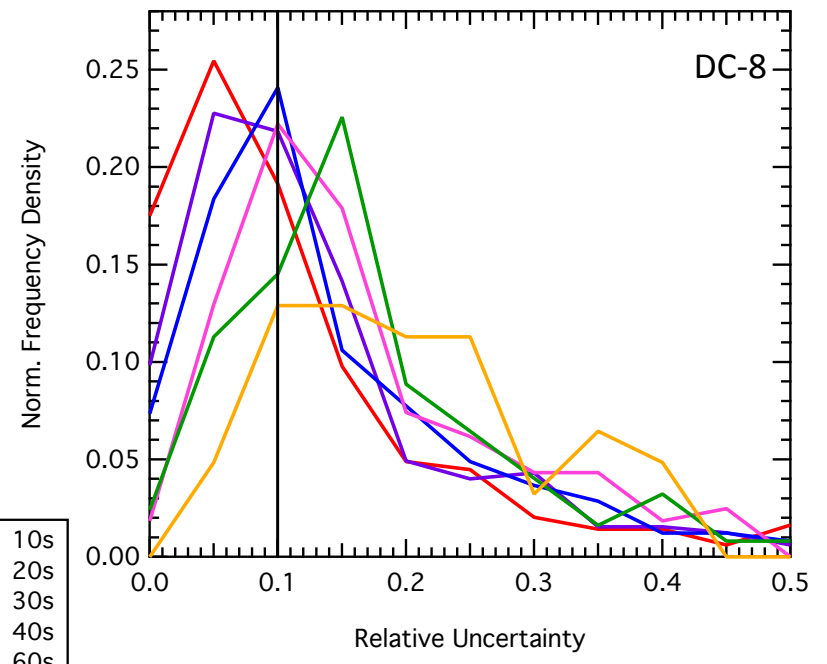
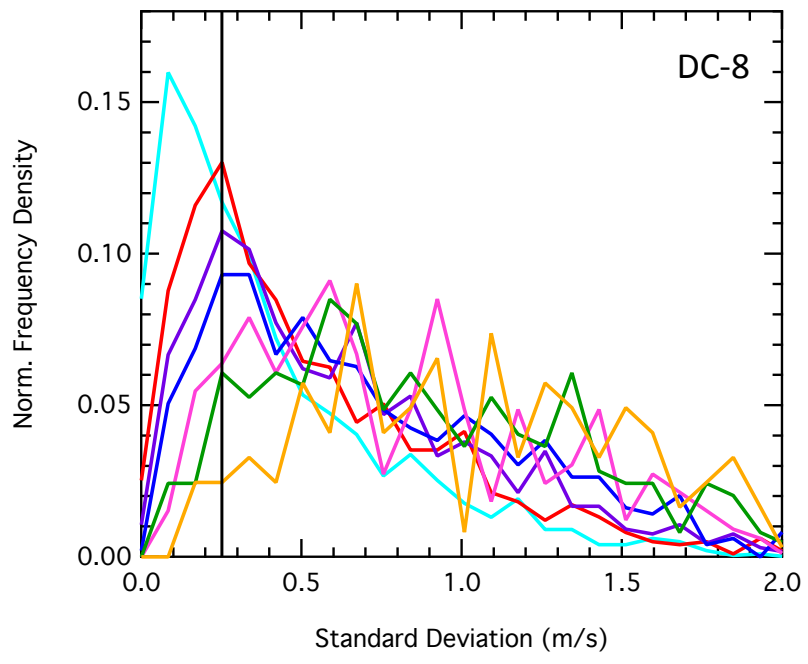


- 10s
- 20s
- 30s
- 40s
- 60s
- 80s
- 160s

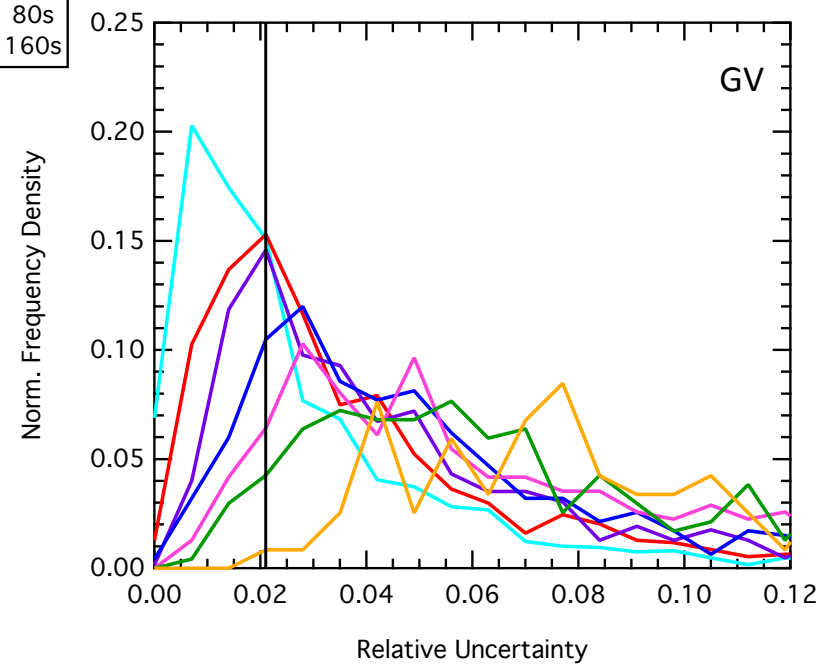
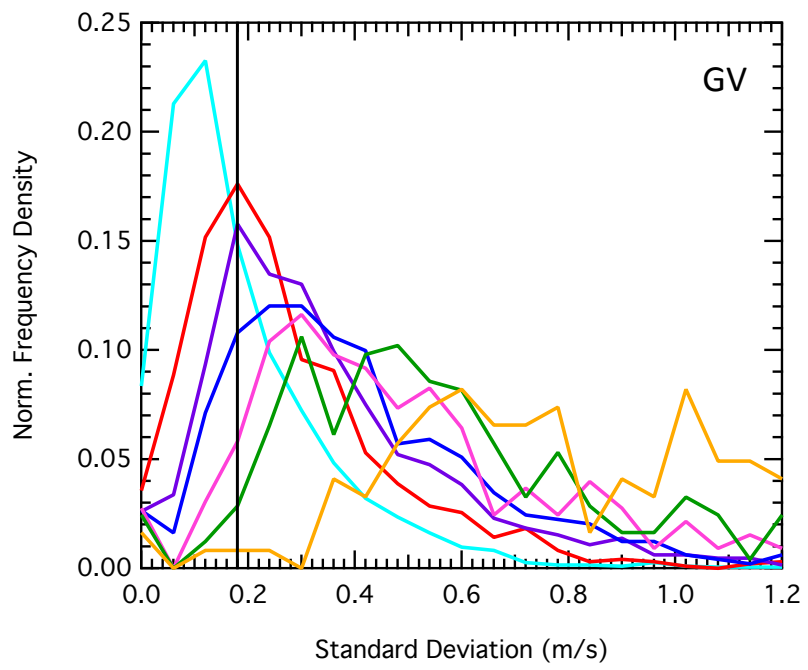
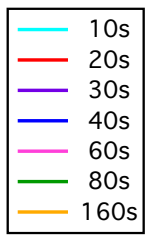
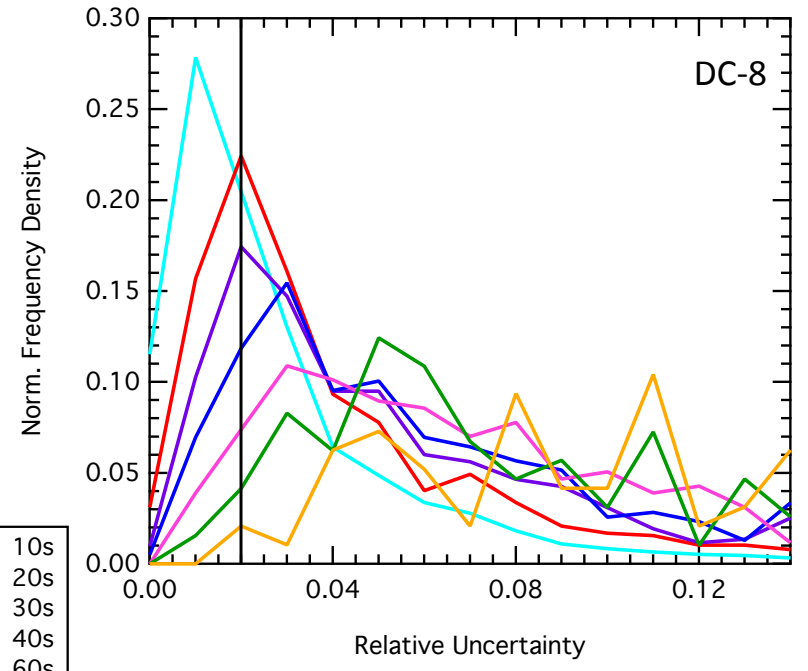
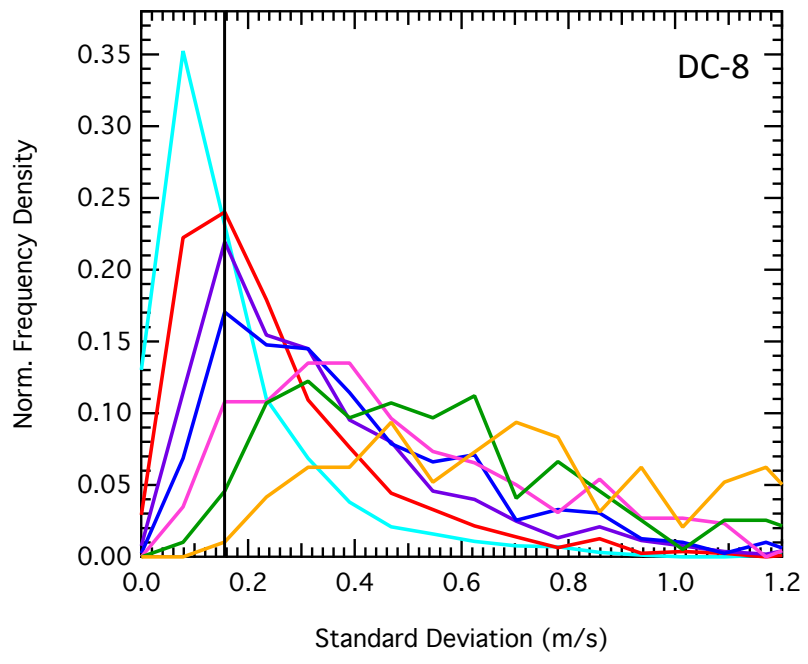


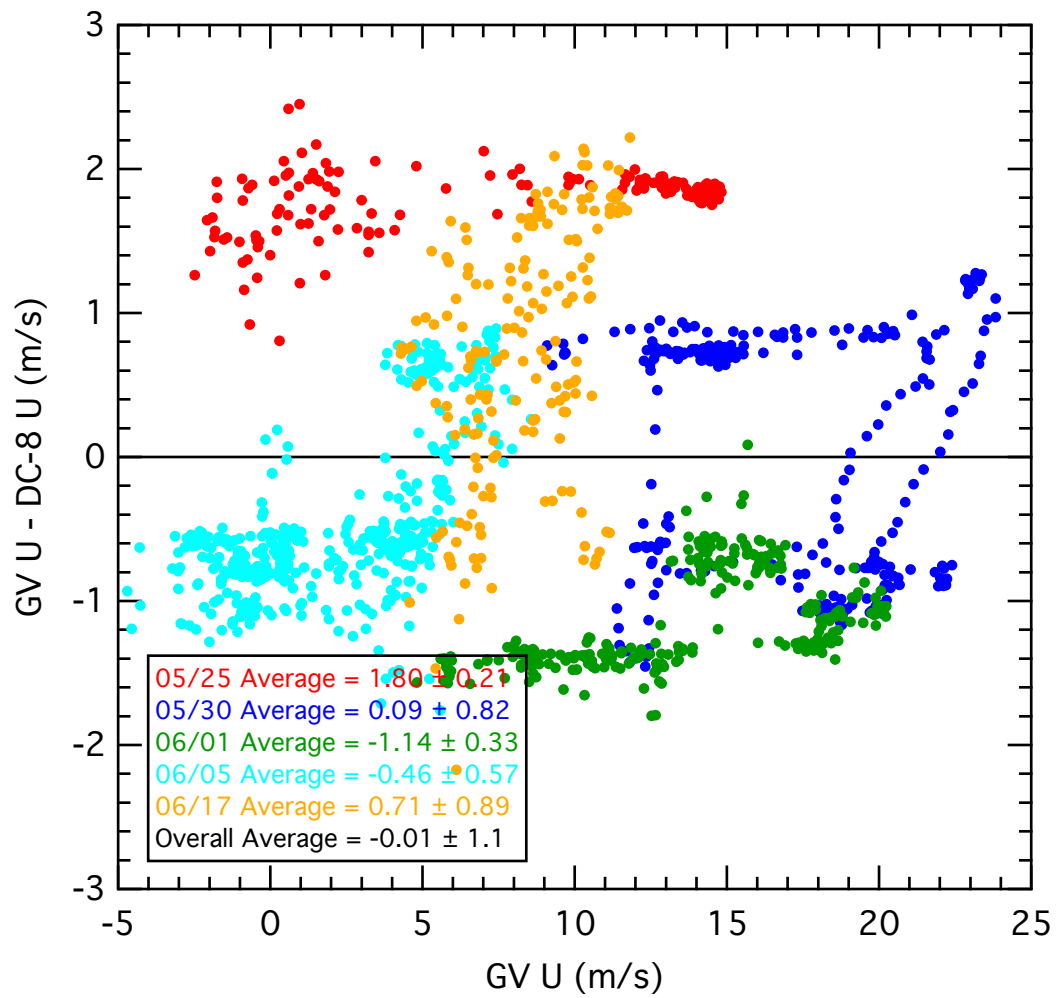


U



U





IEIP Analysis Results: Absolute Precision

Flight	Platform	IEIP Precision (m/s)	Expected Variability (m/s)	Observed Variability (m/s)	Adjusted Precision (m/s)
05/25	DC-8	0.072	0.26	0.21	0.1
	GV	0.12			0.24
05/30	DC-8	0.07	0.2	0.82	0.656
	GV	0.1			0.492
06/01	DC-8	0.1	0.269	0.33	0.221
	GV	0.15			0.245
06/05	DC-8	0.1	0.392	0.57	0.366
	GV	0.16			0.436
06/17	DC-8	0.1	0.238	0.89	0.583
	GV	0.12			0.673

- Note graphs displayed have different axes.
- IEIP analyses are subjective.
- For more information on the Internal Estimate of Instrument Precision (IEIP) procedure refer to <http://www-air.larc.nasa.gov/TAbMEP.html>