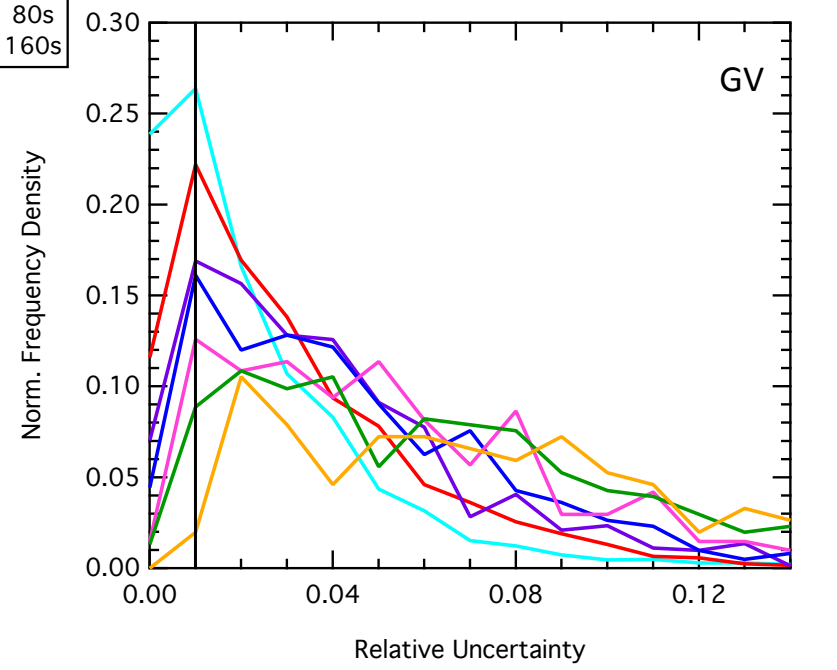
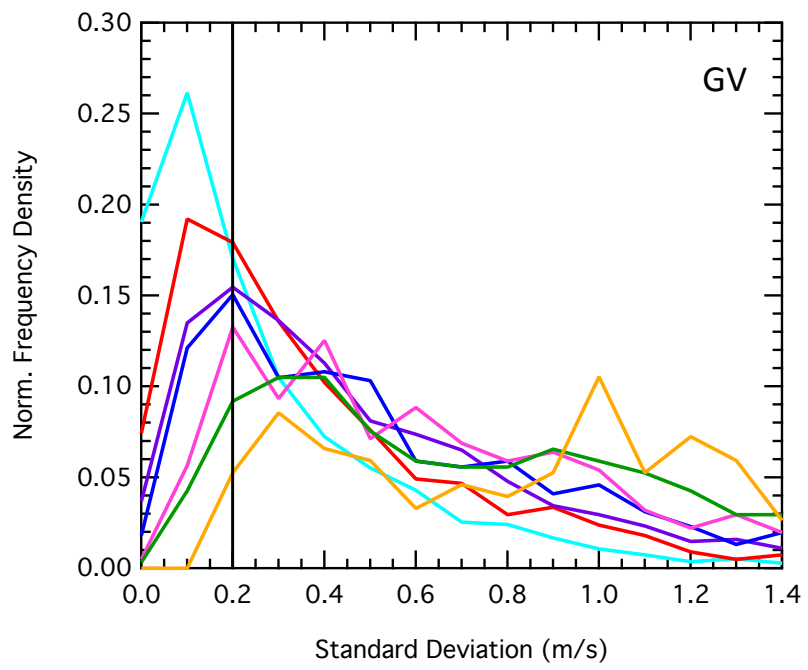
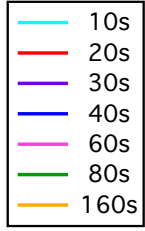
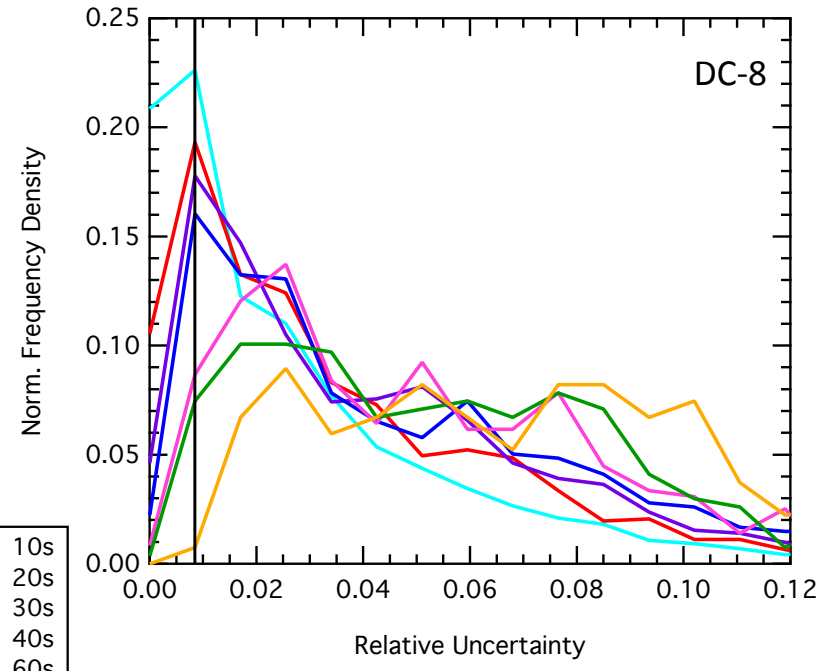
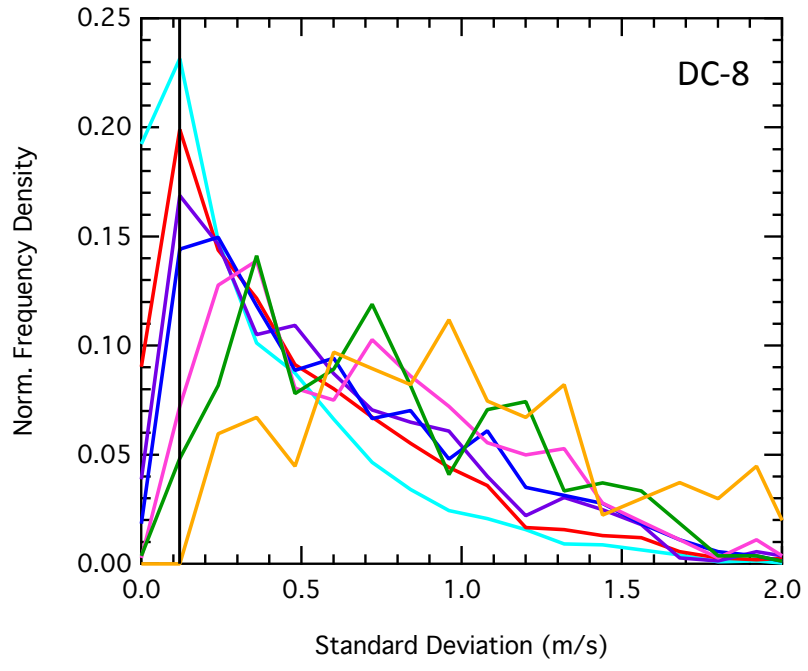
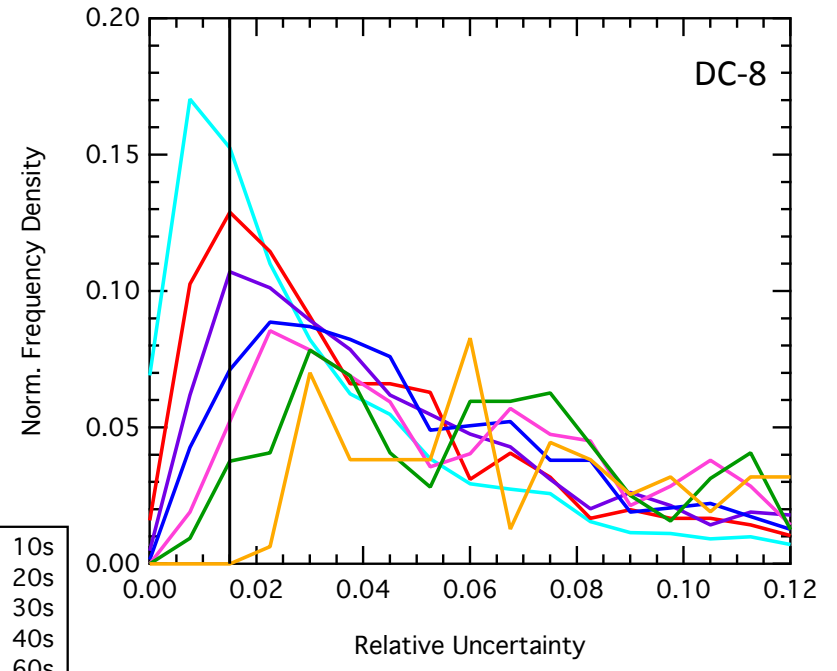
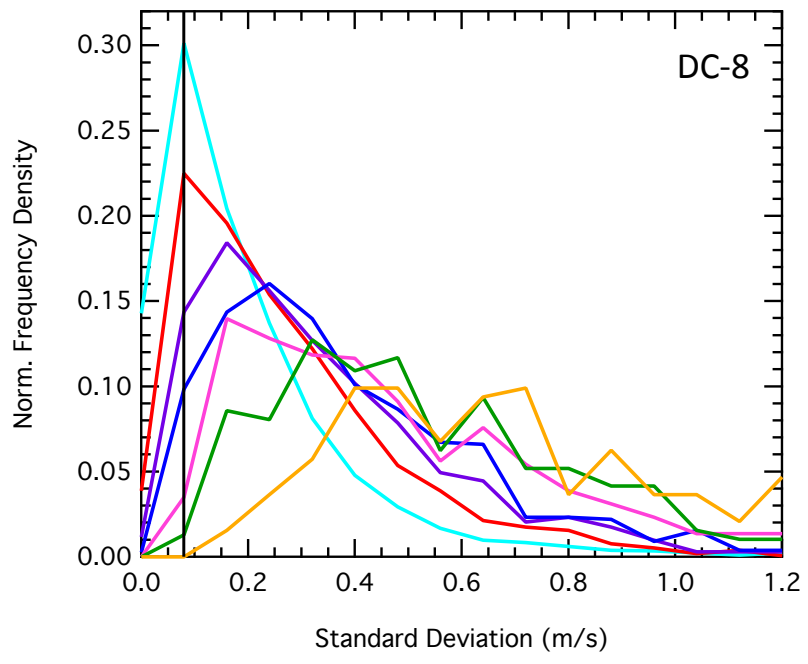


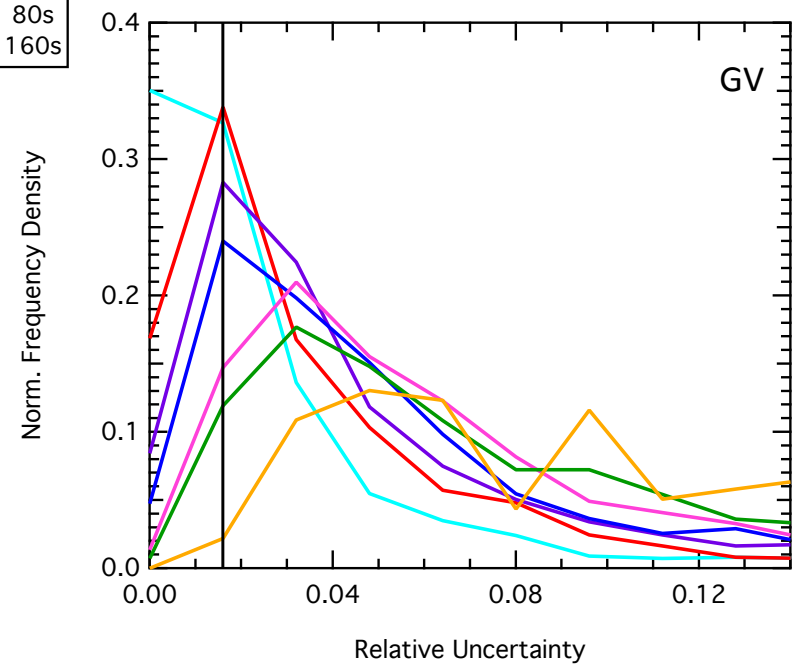
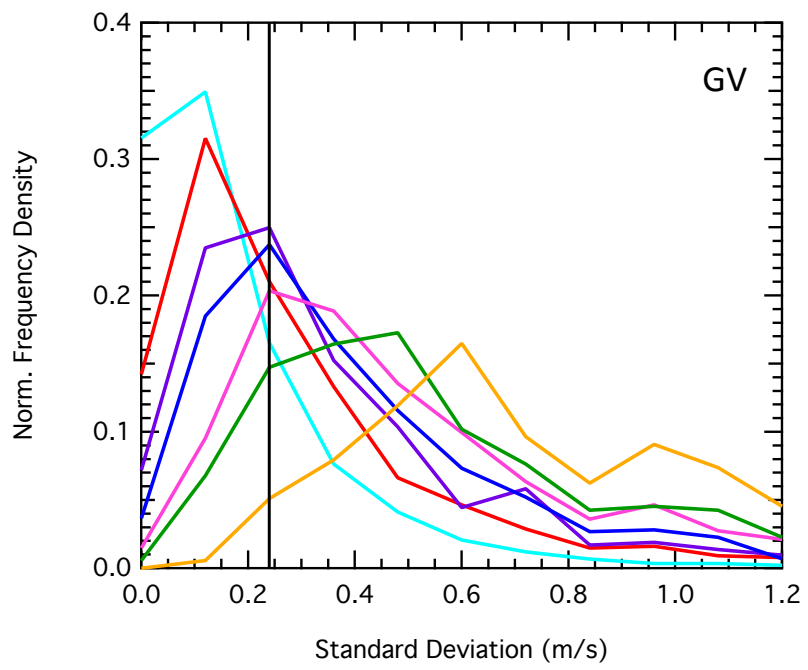
V



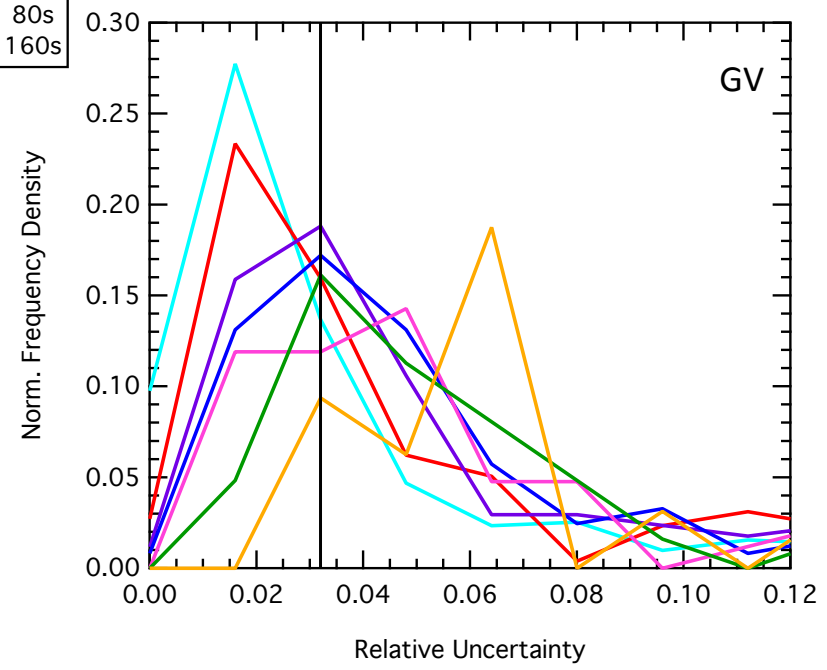
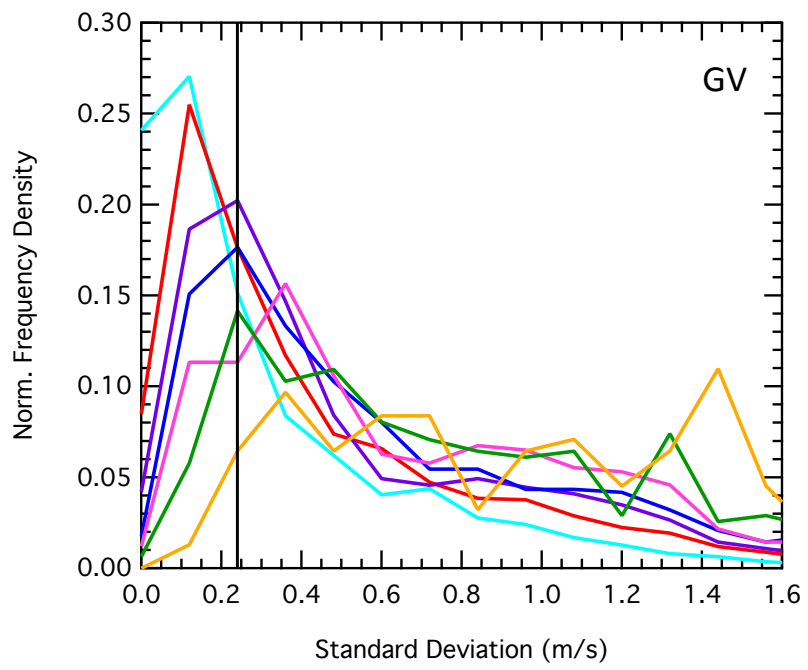
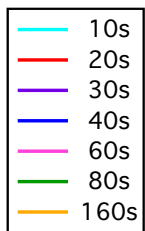
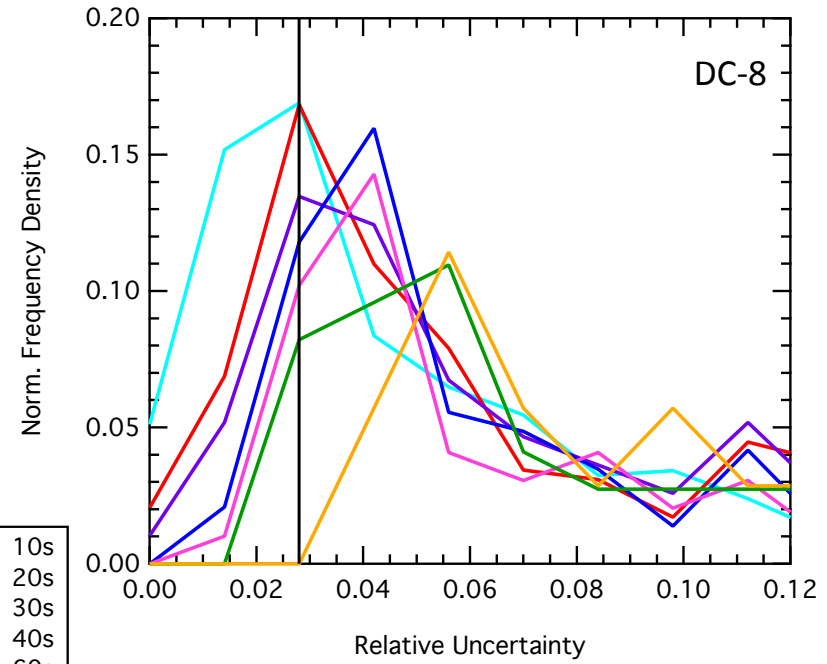
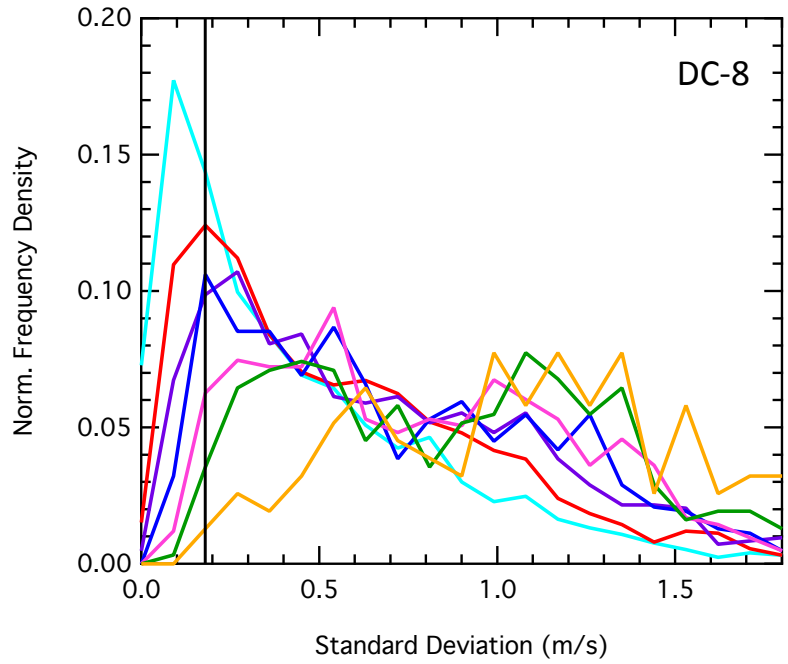
V



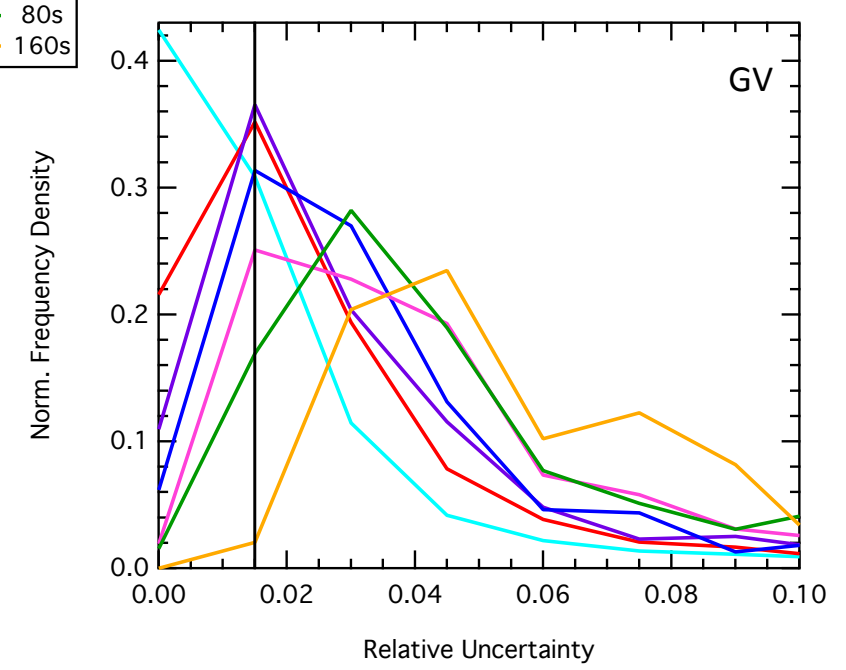
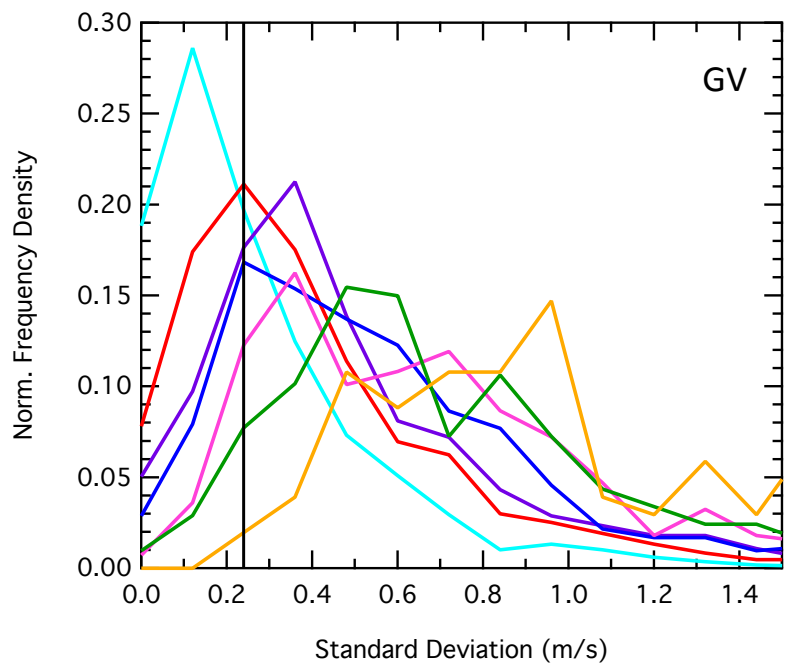
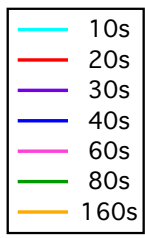
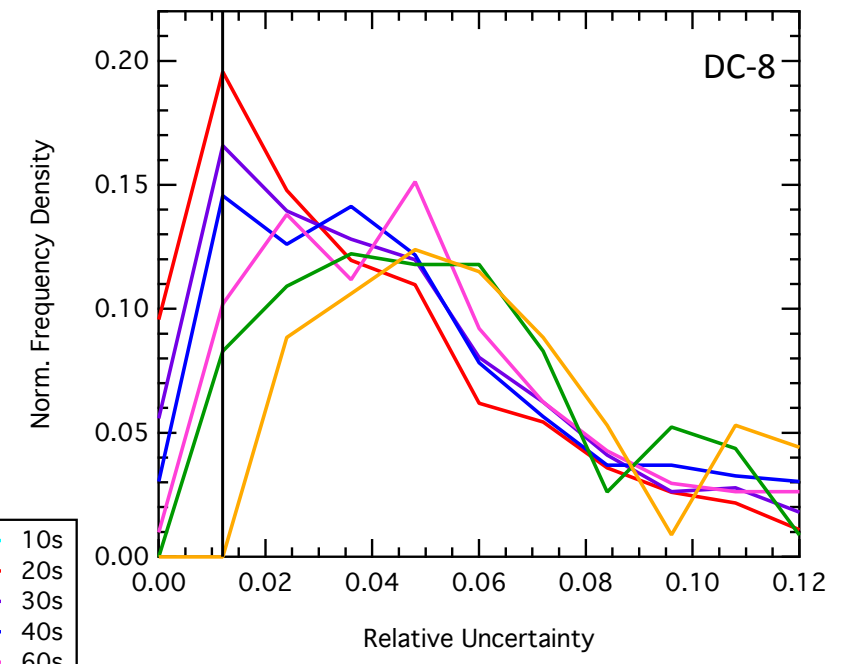
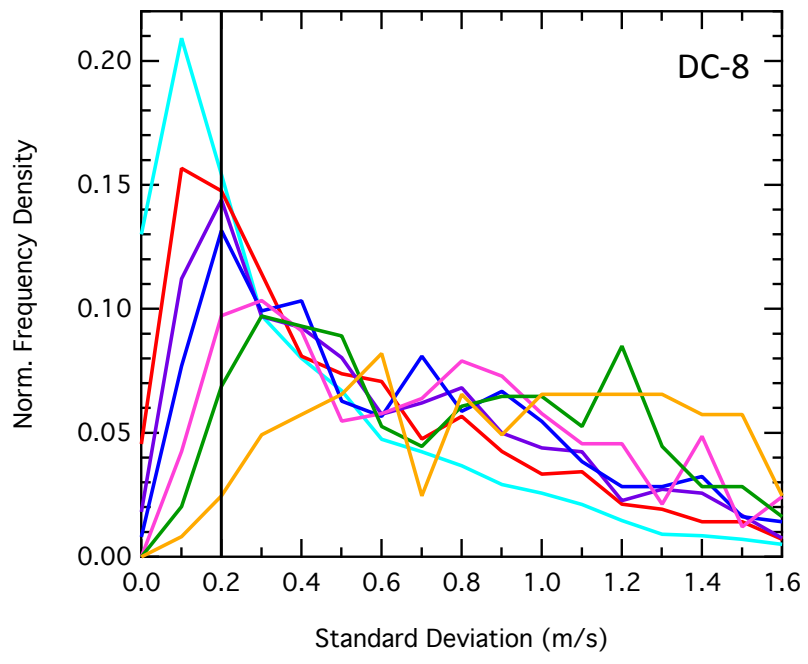
- 10s
- 20s
- 30s
- 40s
- 60s
- 80s
- 160s



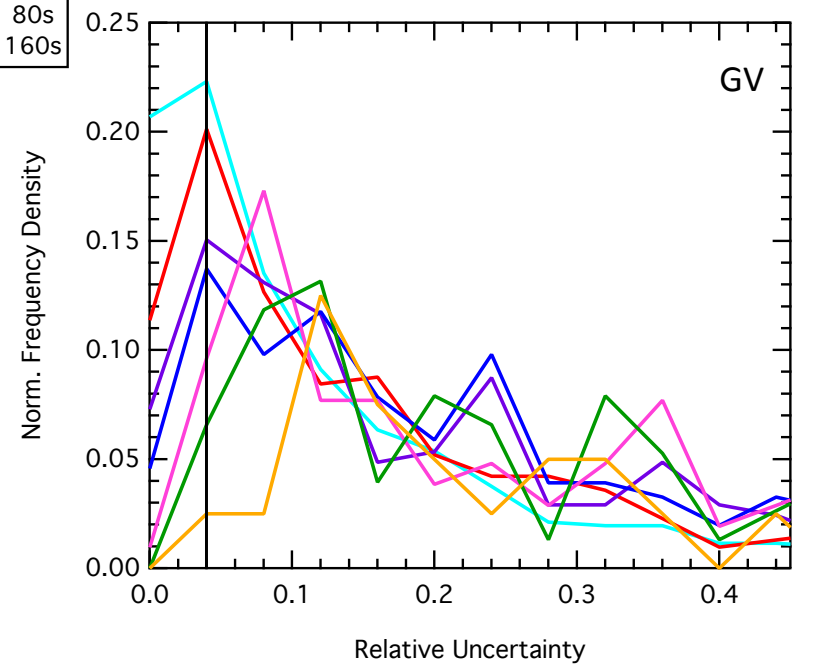
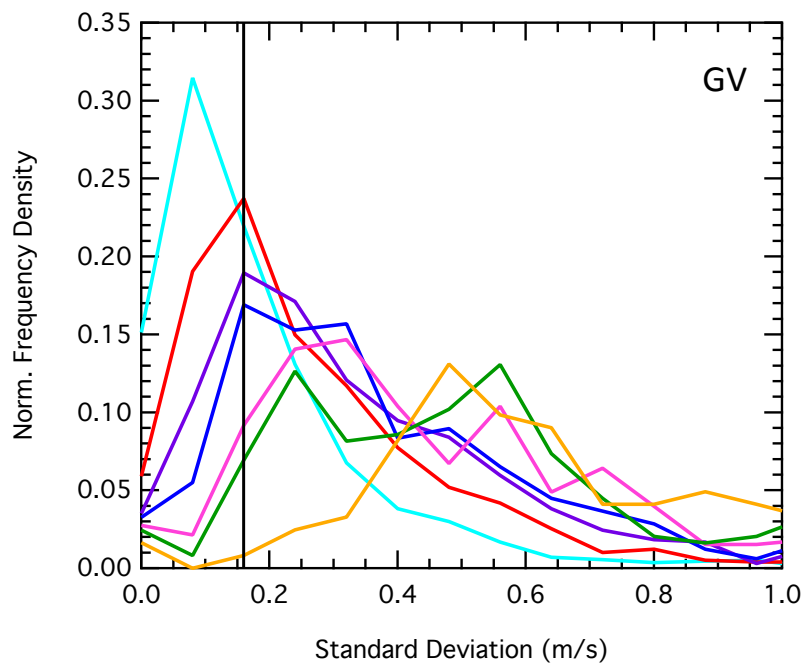
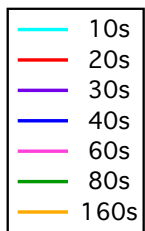
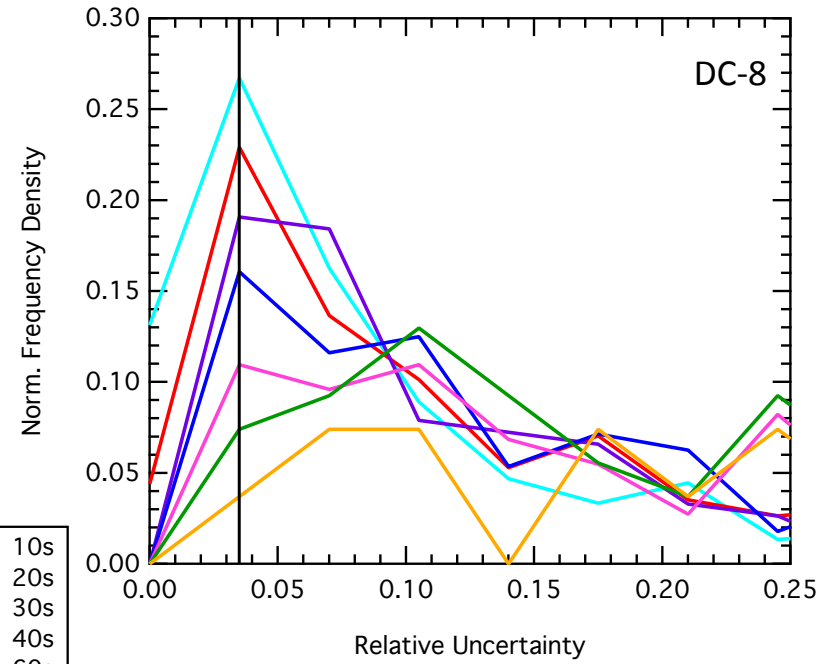
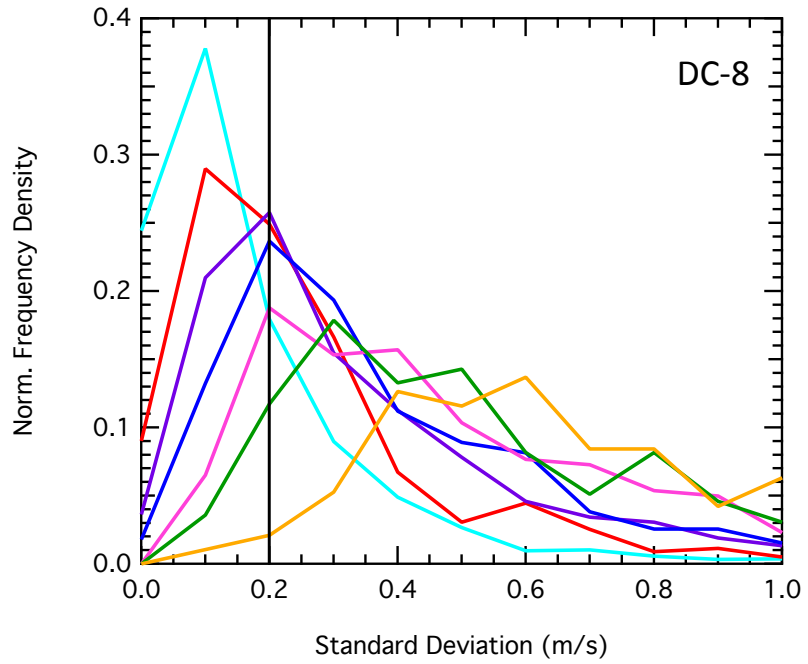
V

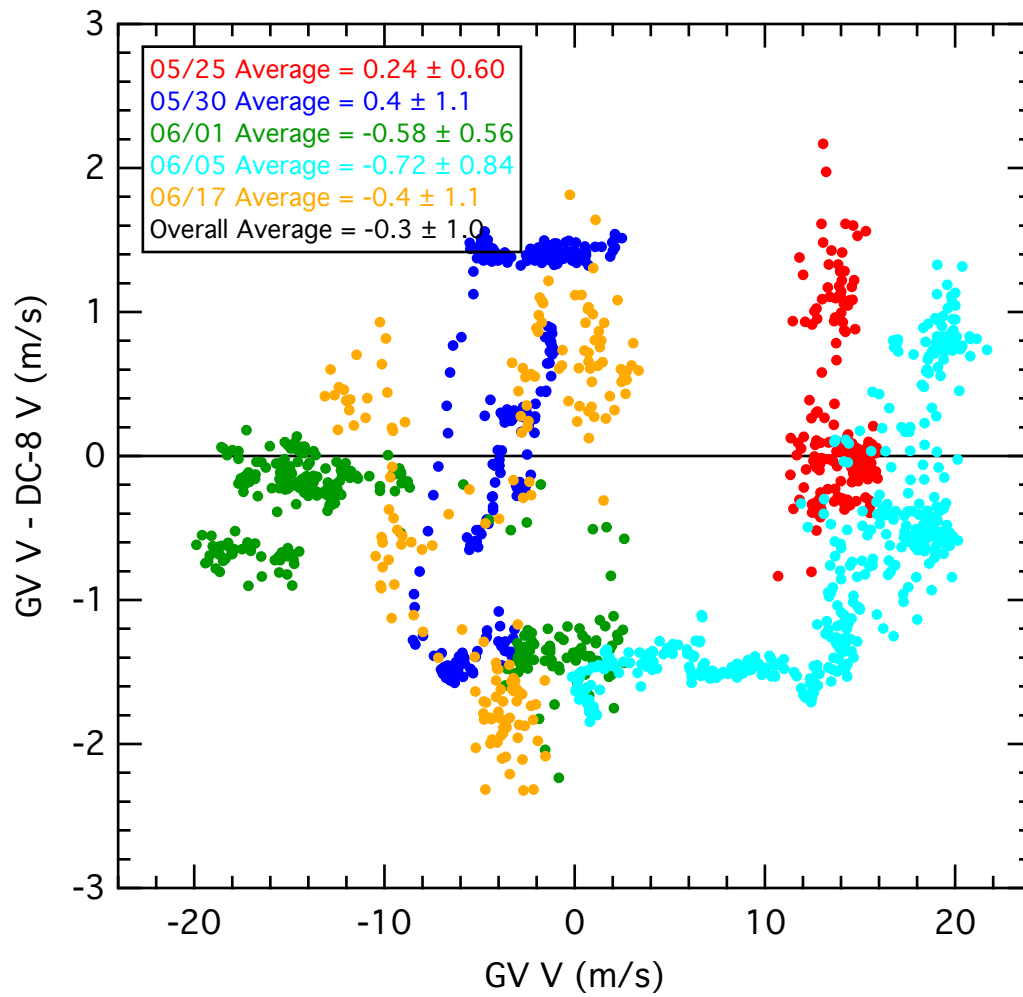


V



V





## IEIP Analysis Results: Absolute Precision

Flight	Platform	IEIP Precision (m/s)	Expected Variability (m/s)	Observed Variability (m/s)	Adjusted Precision (m/s)
05/25	DC-8	0.072	0.233	0.6	0.309
	GV	0.12			0.515
05/30	DC-8	0.07	0.253	1.1	0.348
	GV	0.1			1.043
06/01	DC-8	0.1	0.300	0.56	0.336
	GV	0.15			0.448
06/05	DC-8	0.1	0.312	0.84	0.538
	GV	0.16			0.646
06/17	DC-8	0.1	0.256	1.1	0.859
	GV	0.12			0.688

- Note graphs displayed have different axes.
- IEIP analyses are subjective.
- For more information on the Internal Estimate of Instrument Precision (IEIP) procedure refer to <http://www-air.larc.nasa.gov/TAbMEP.html>