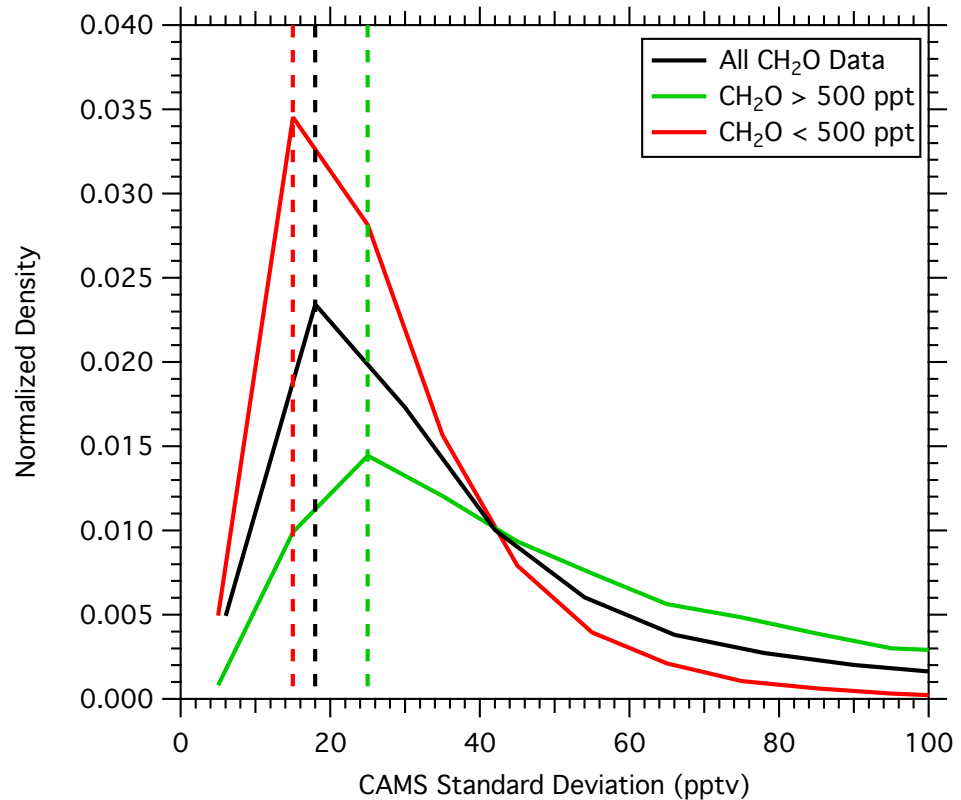
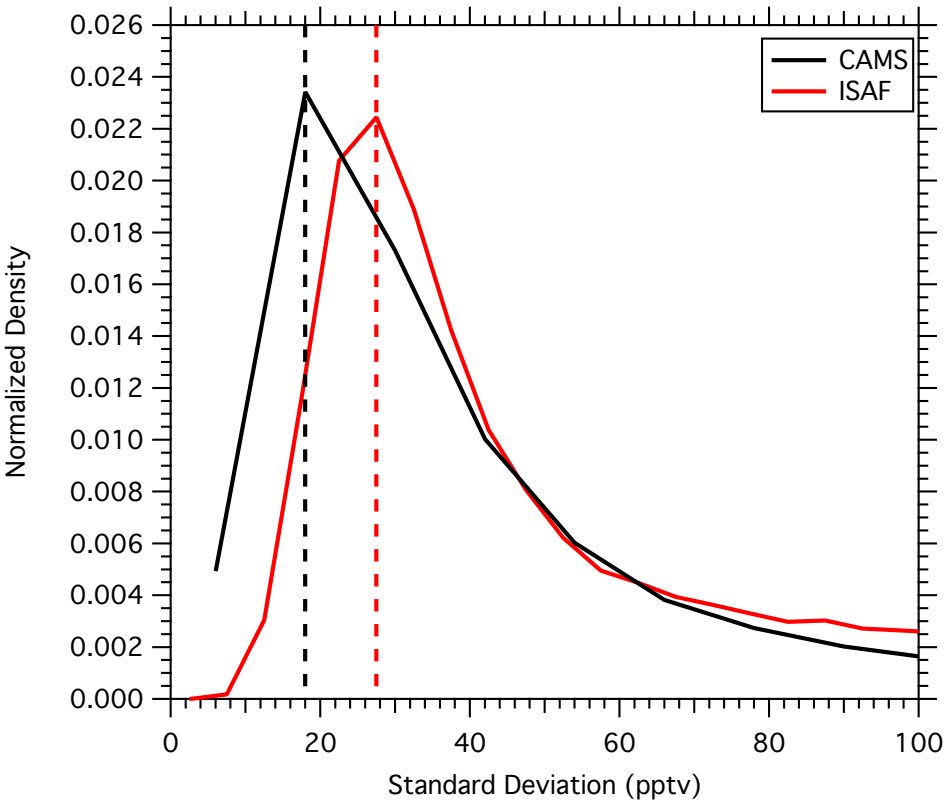


Precision



- CAMS 1s precision is about 18 pptv
- ISAF 1s precision is about 28 pptv
- The right hand figure demonstrates that at higher CH₂O levels the standard deviation is influenced by ambient variability at the 10 second time interval.

Data:

- 1 second CAMS: SEAC4RS-CH2O_DC8_#####_R0.ict (##### = daily files from 20130806 – 20130923).
- 1 second ISAF: SEAC4RS-ISAF-H2CO_DC8_#####_R1.ict (##### = daily files from 20130806 – 20130923).

Precision for 1 second data: Bins containing at least 70% of data

- Standard deviations were calculated for 5, 10, 20, and 40 seconds.
- Precisions are estimated at ~20 pptv for CAMS, and ~30 pptv for ISAF.