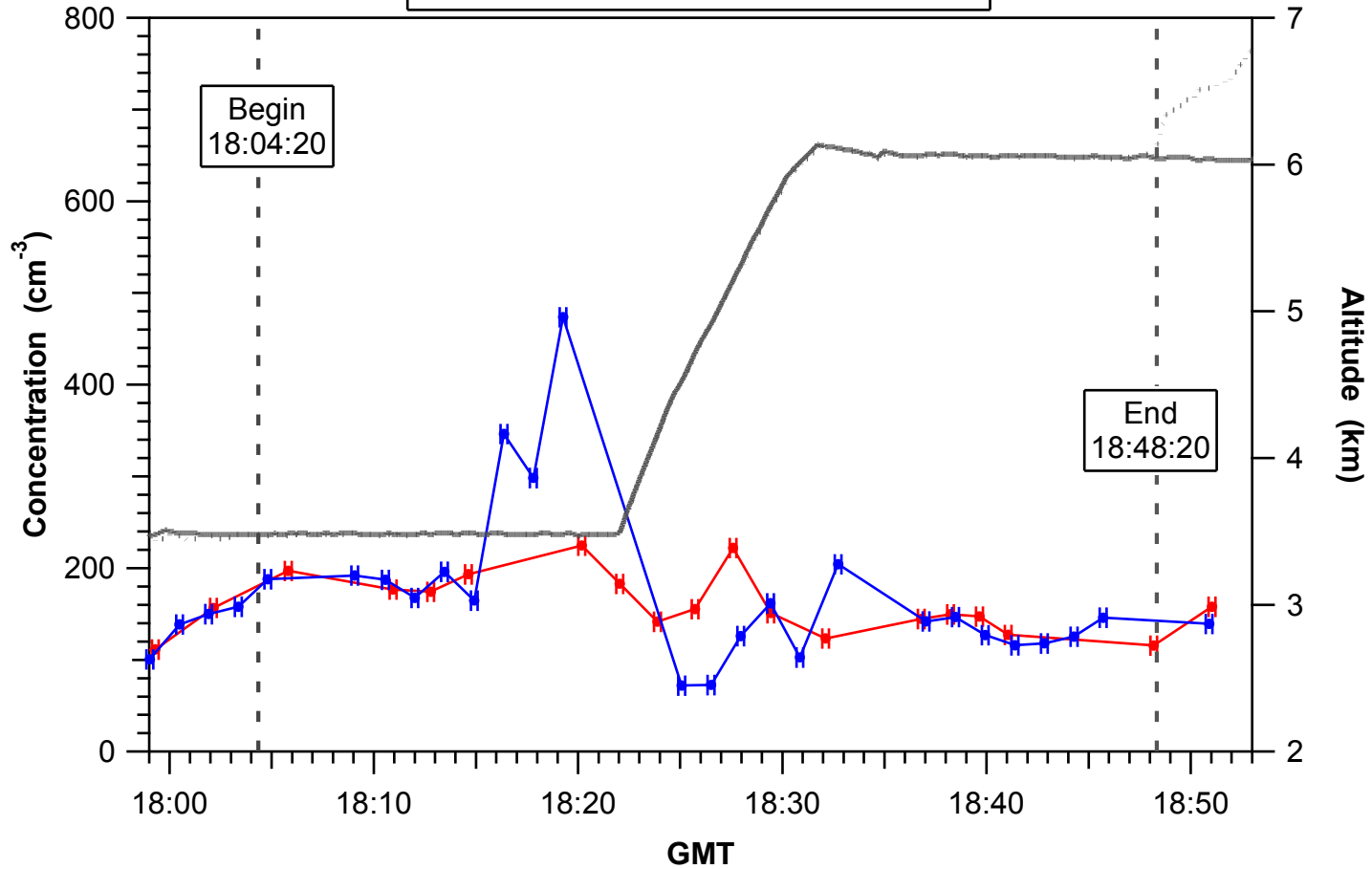
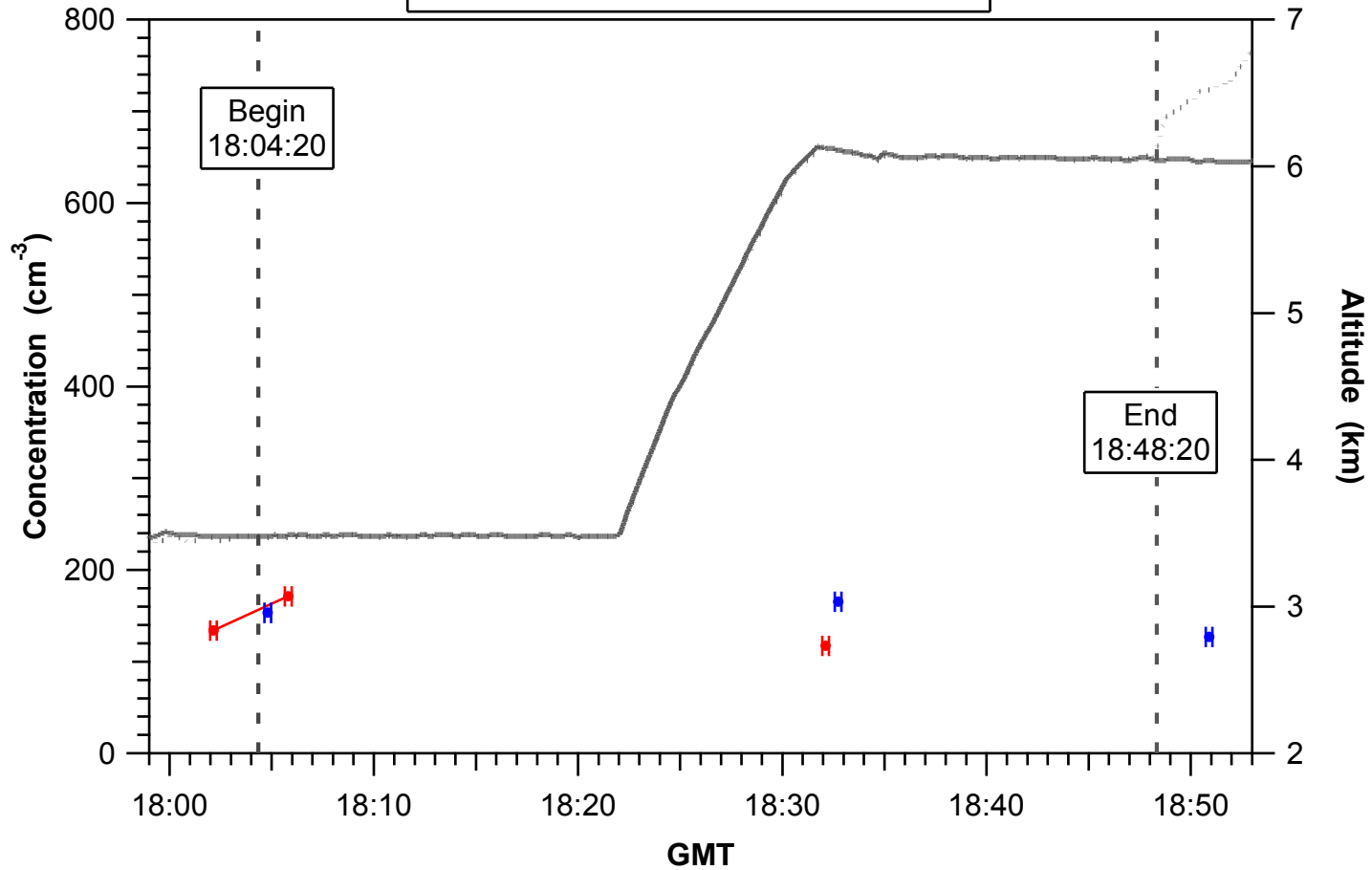


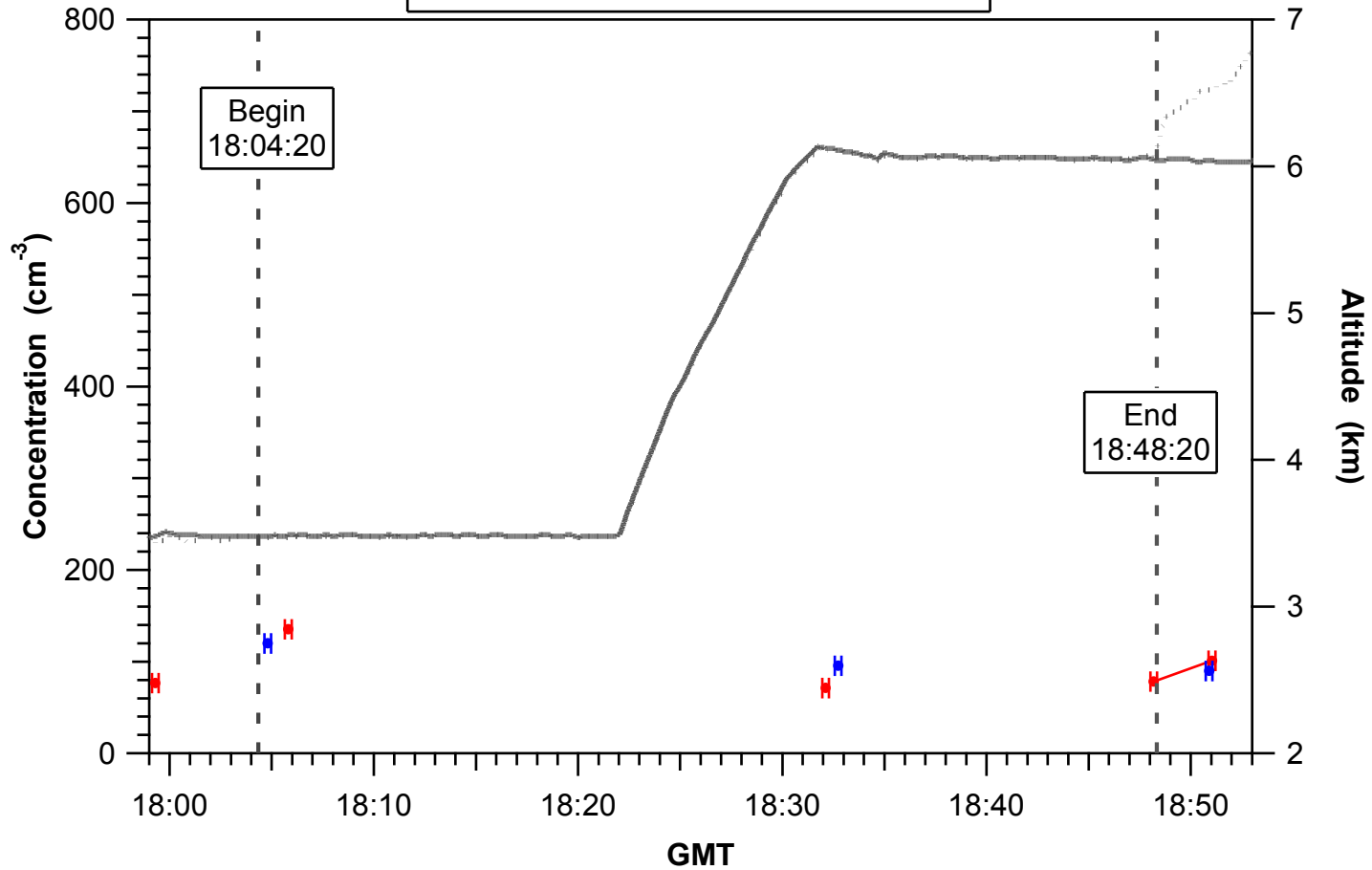
DMA Number
04/17/2006
—●— DC-8 DMA R1 —●— C-130 DMA R1



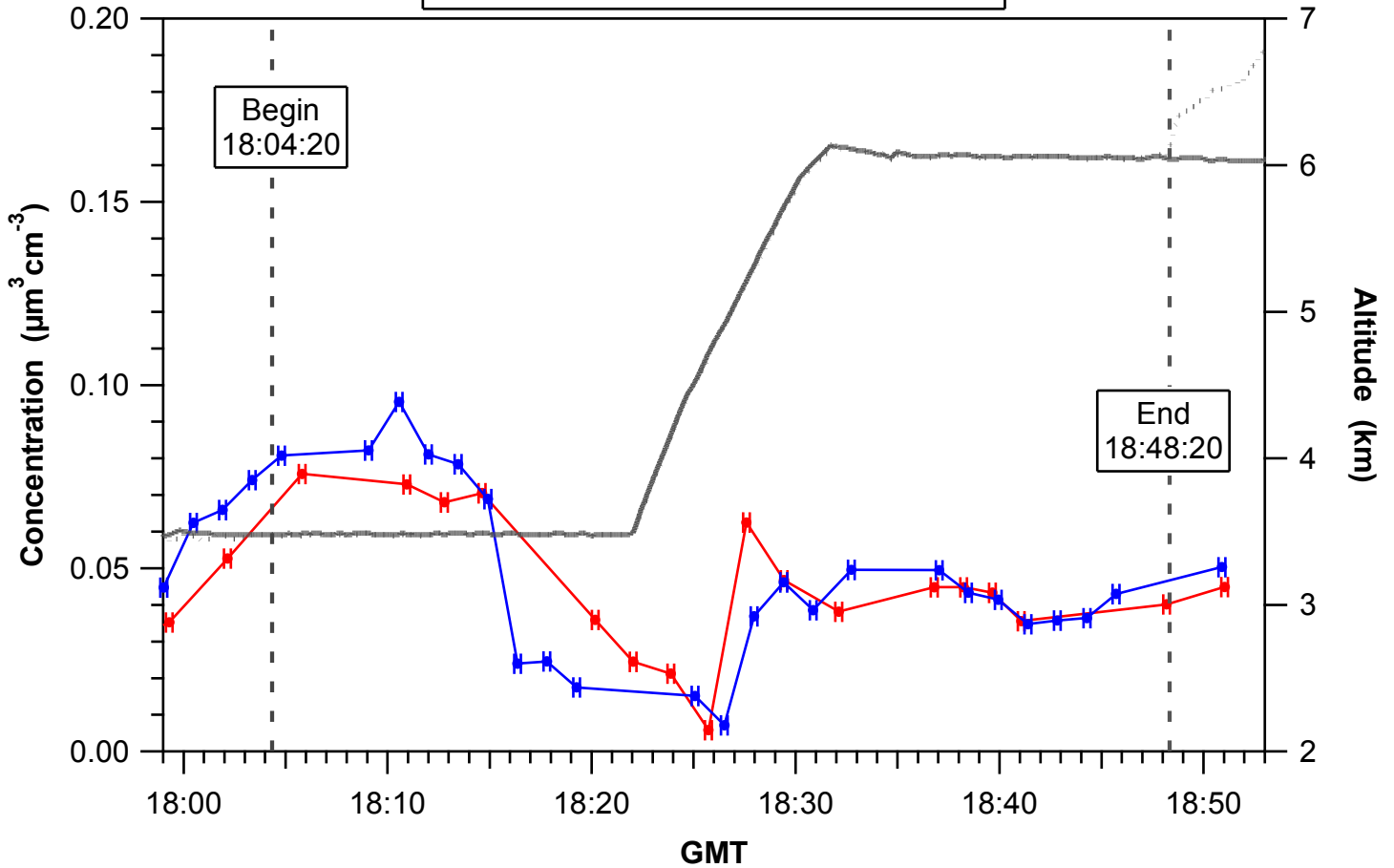
DMA Number @ 150°C
04/17/2006
—●— DC-8 DMA R1 —●— C-130 DMA R1



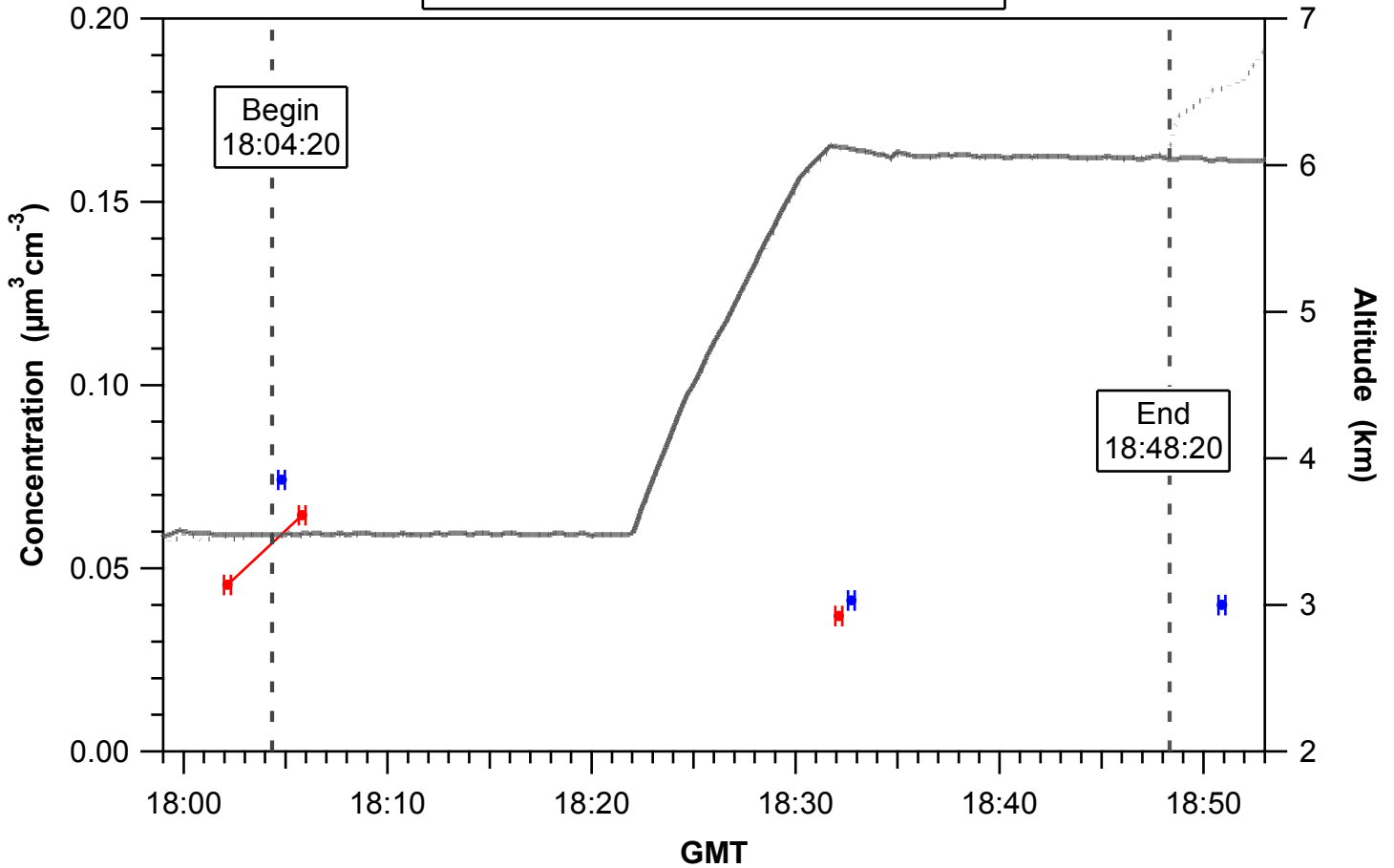
DMA Number @ 300°C
04/17/2006
—●— DC-8 DMA R1 —●— C-130 DMA R1



DMA Volume
04/17/2006
—●— DC-8 DMA R1 —●— C-130 DMA R1



DMA Volume @ 150°C
04/17/2006
—●— DC-8 DMA R1 —●— C-130 DMA R1



DMA Volume @ 300°C
04/17/2006
—●— DC-8 DMA R1 —●— C-130 DMA R1

