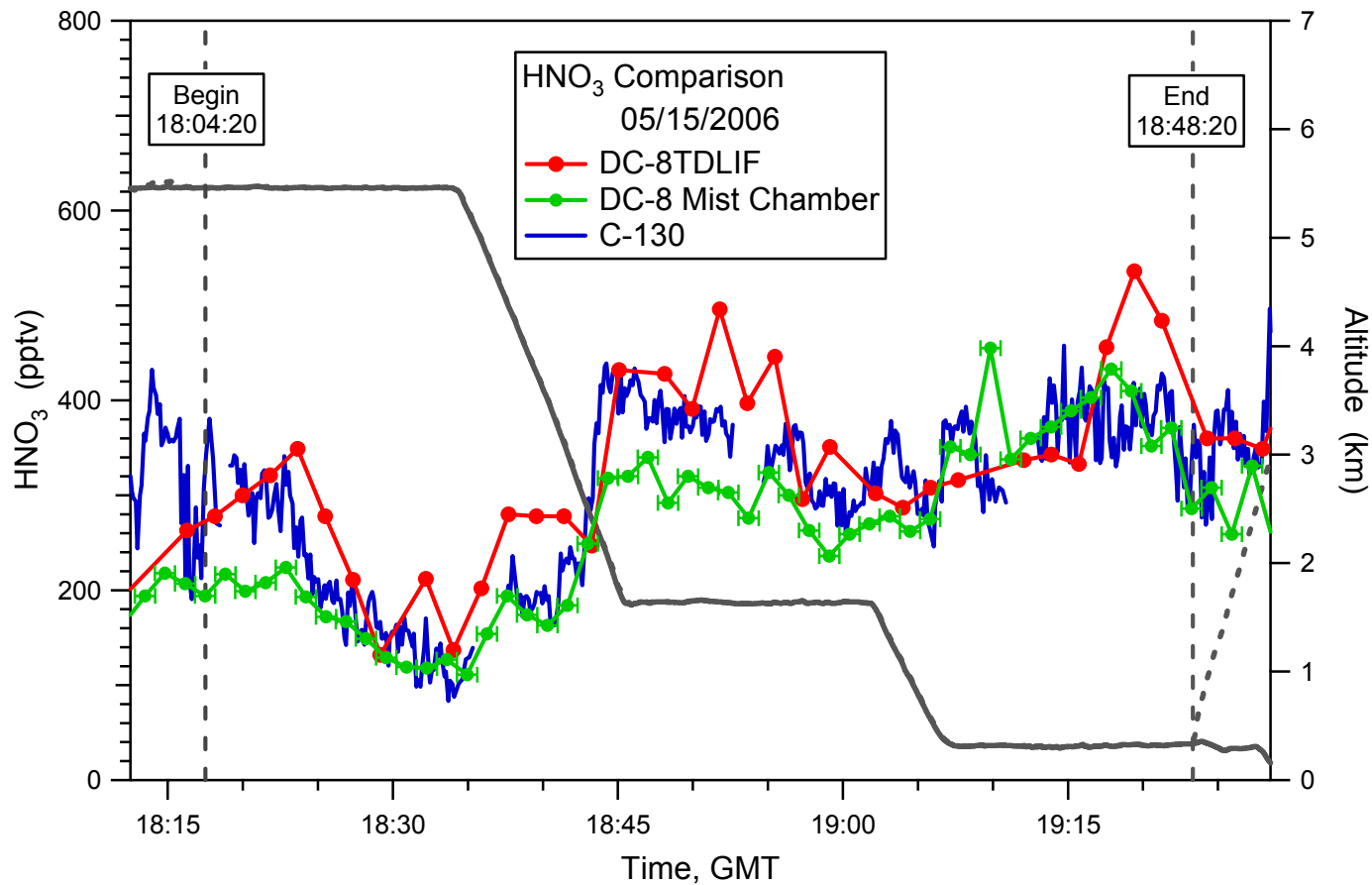
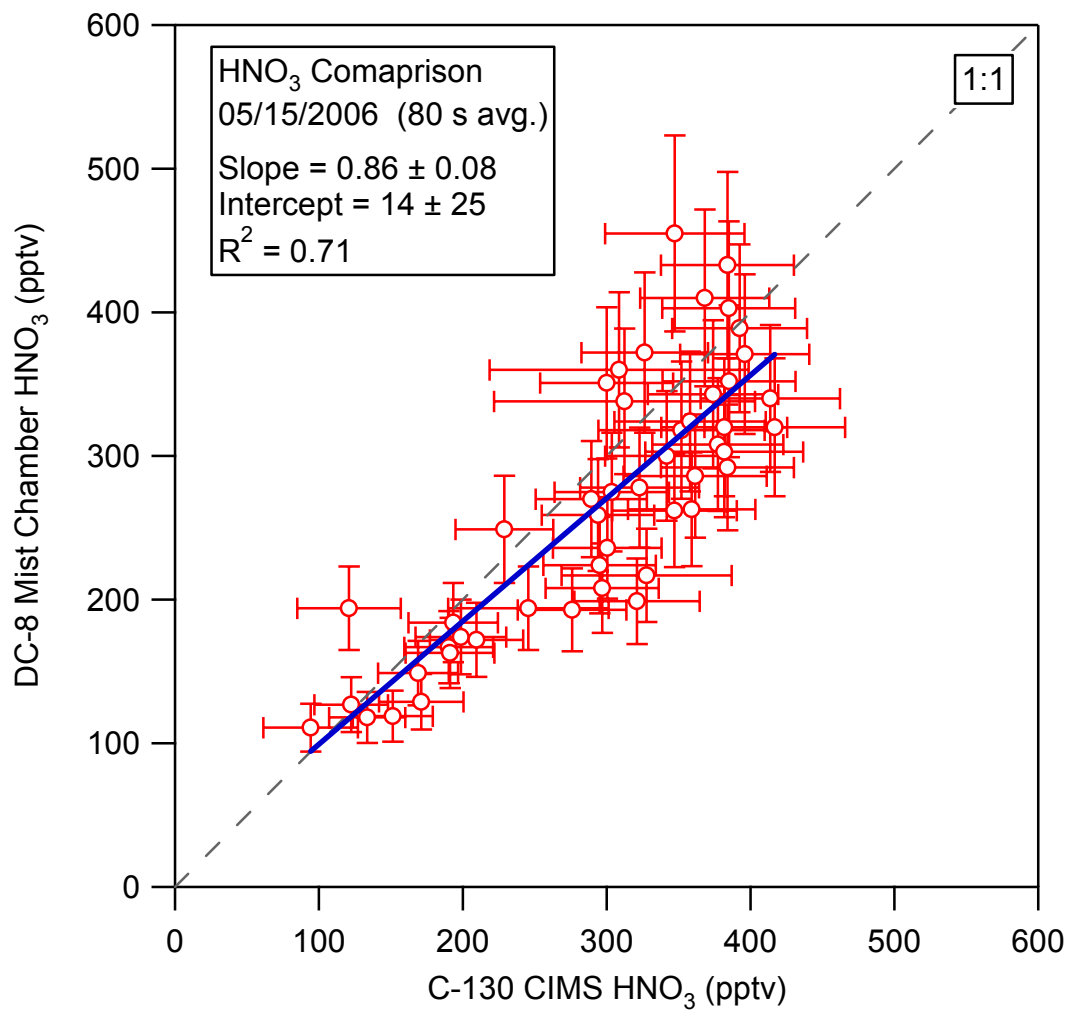
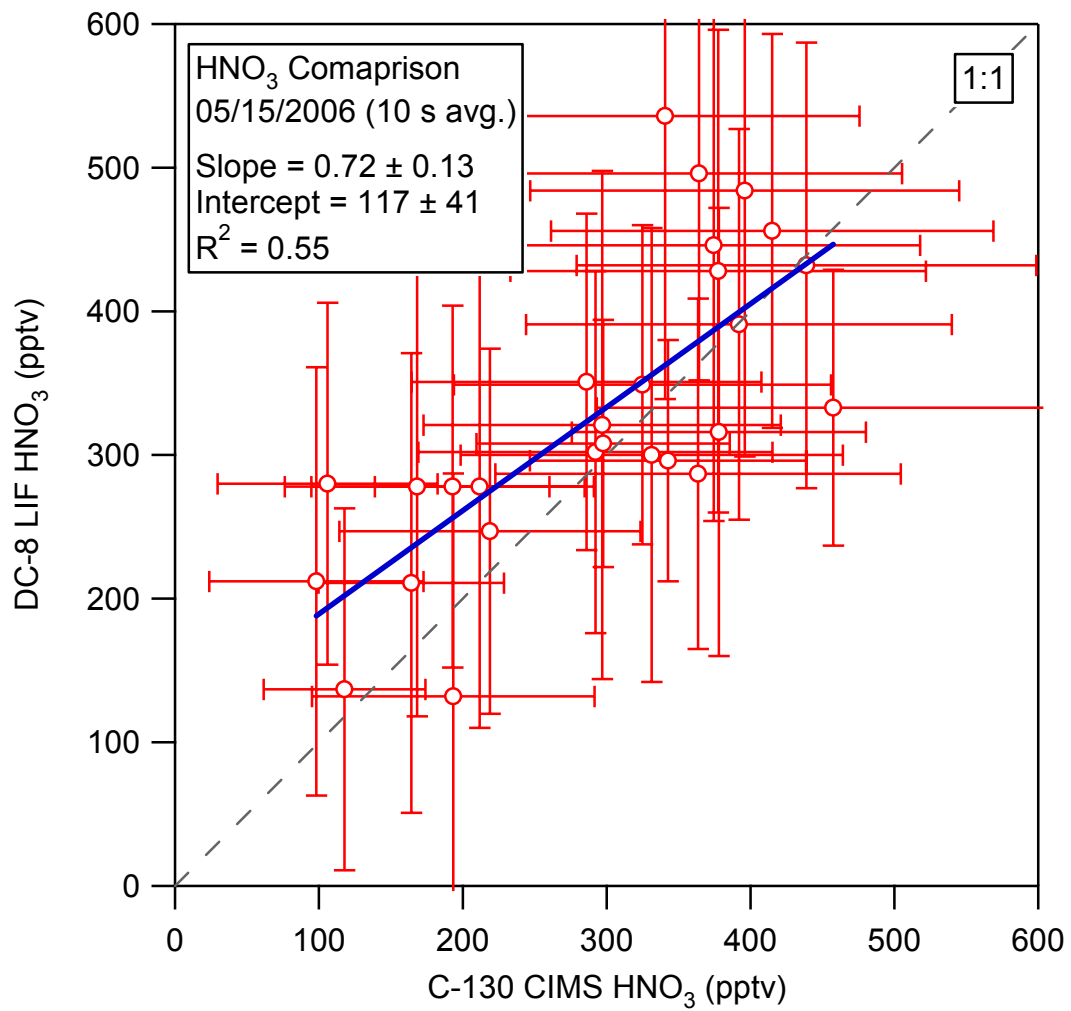
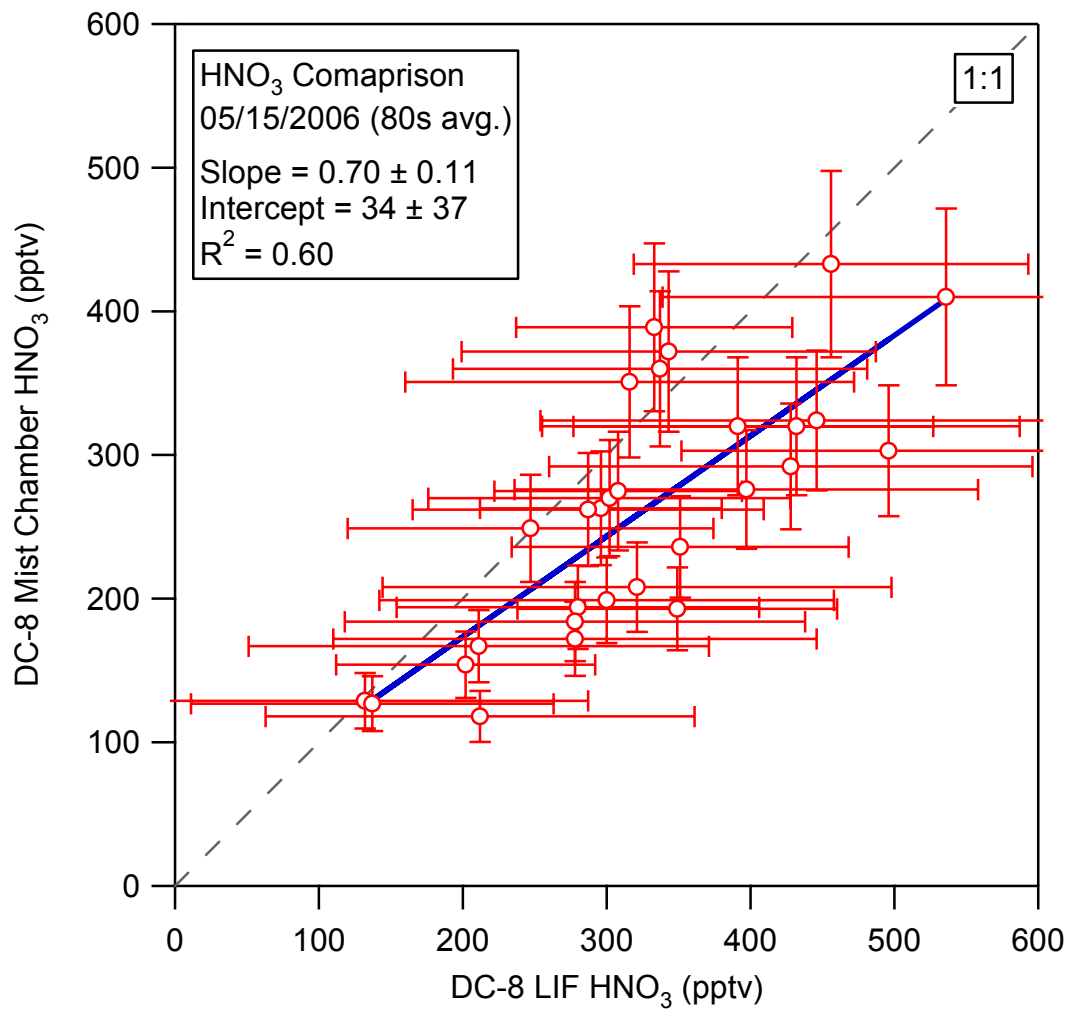


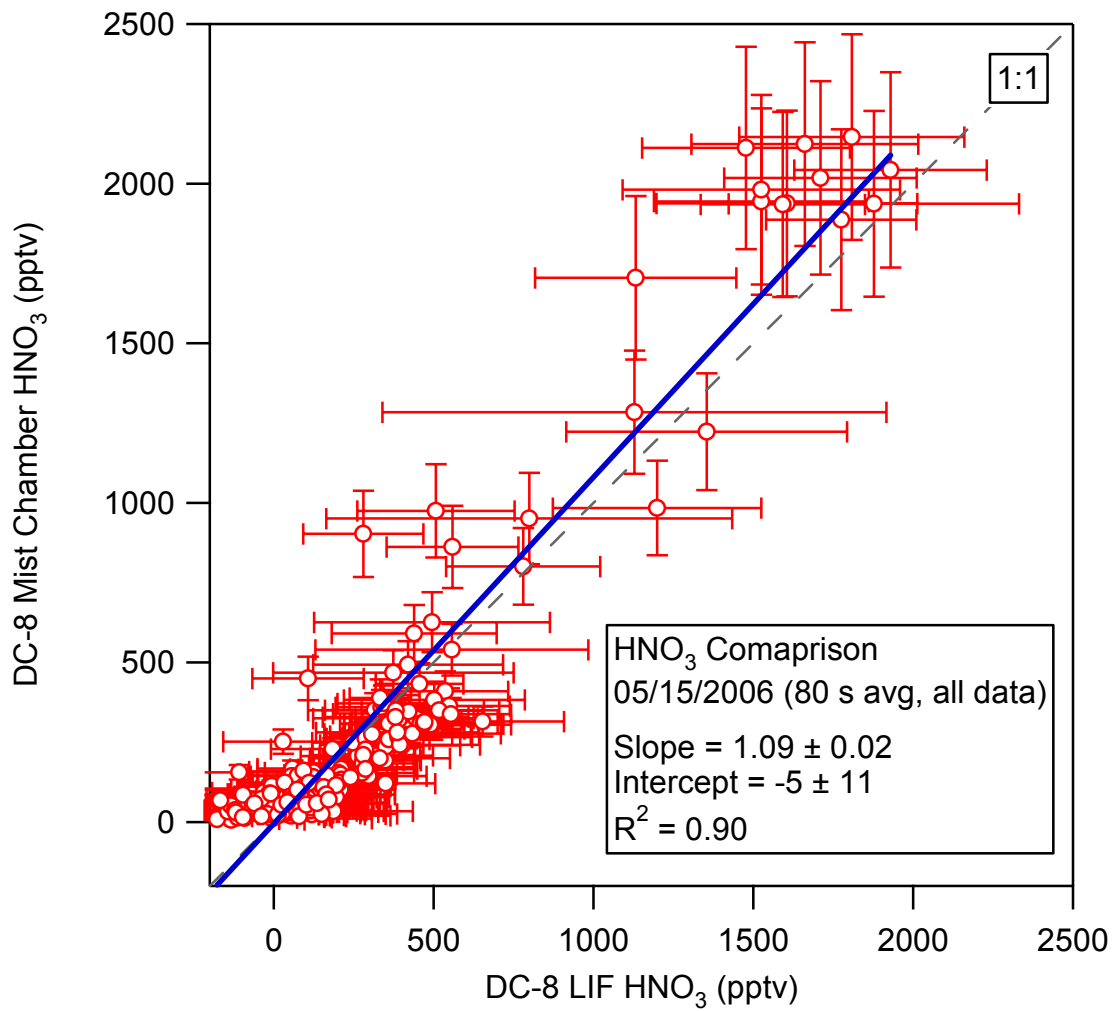
X error bars are derived from ambient variability only.

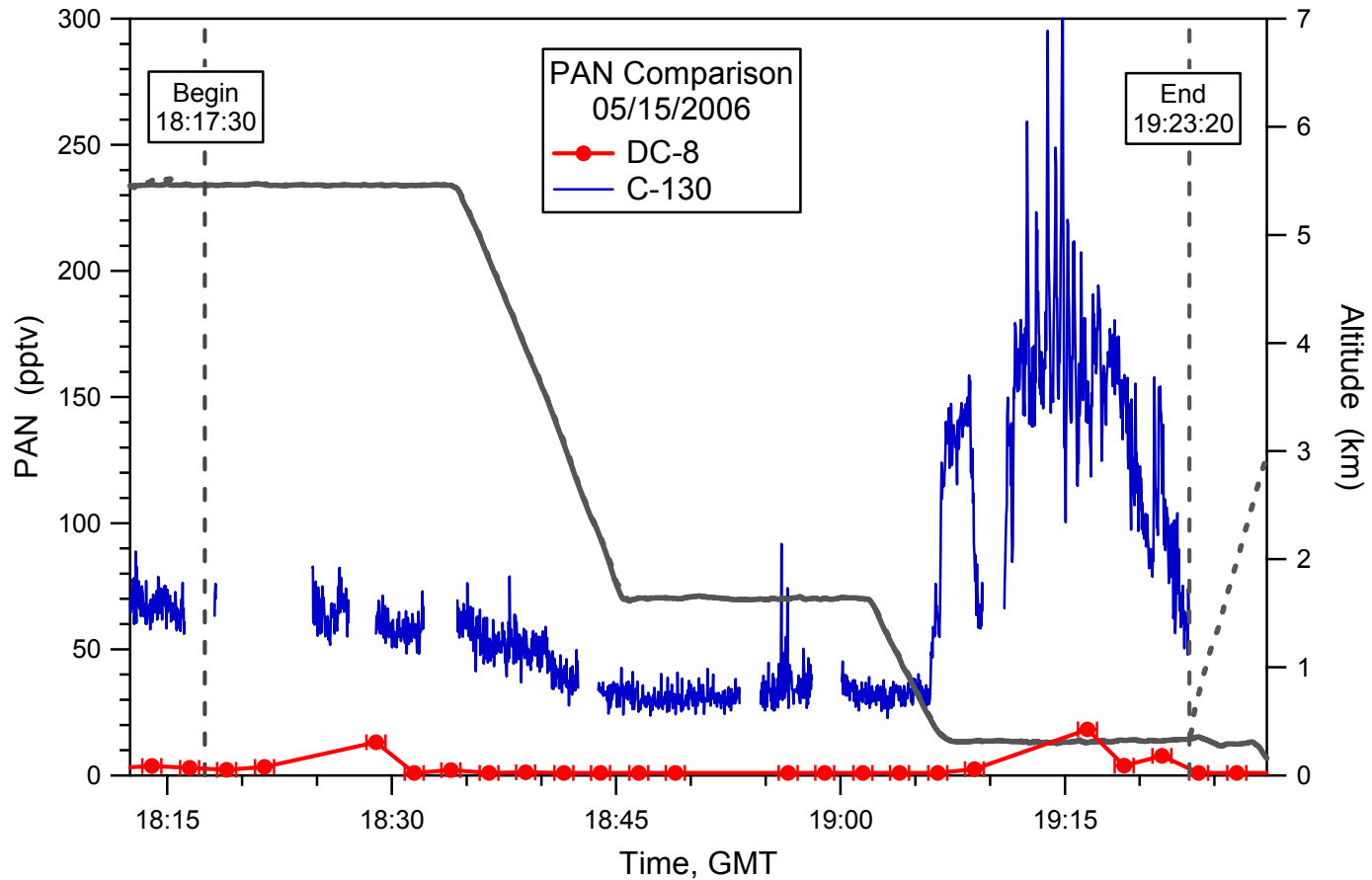




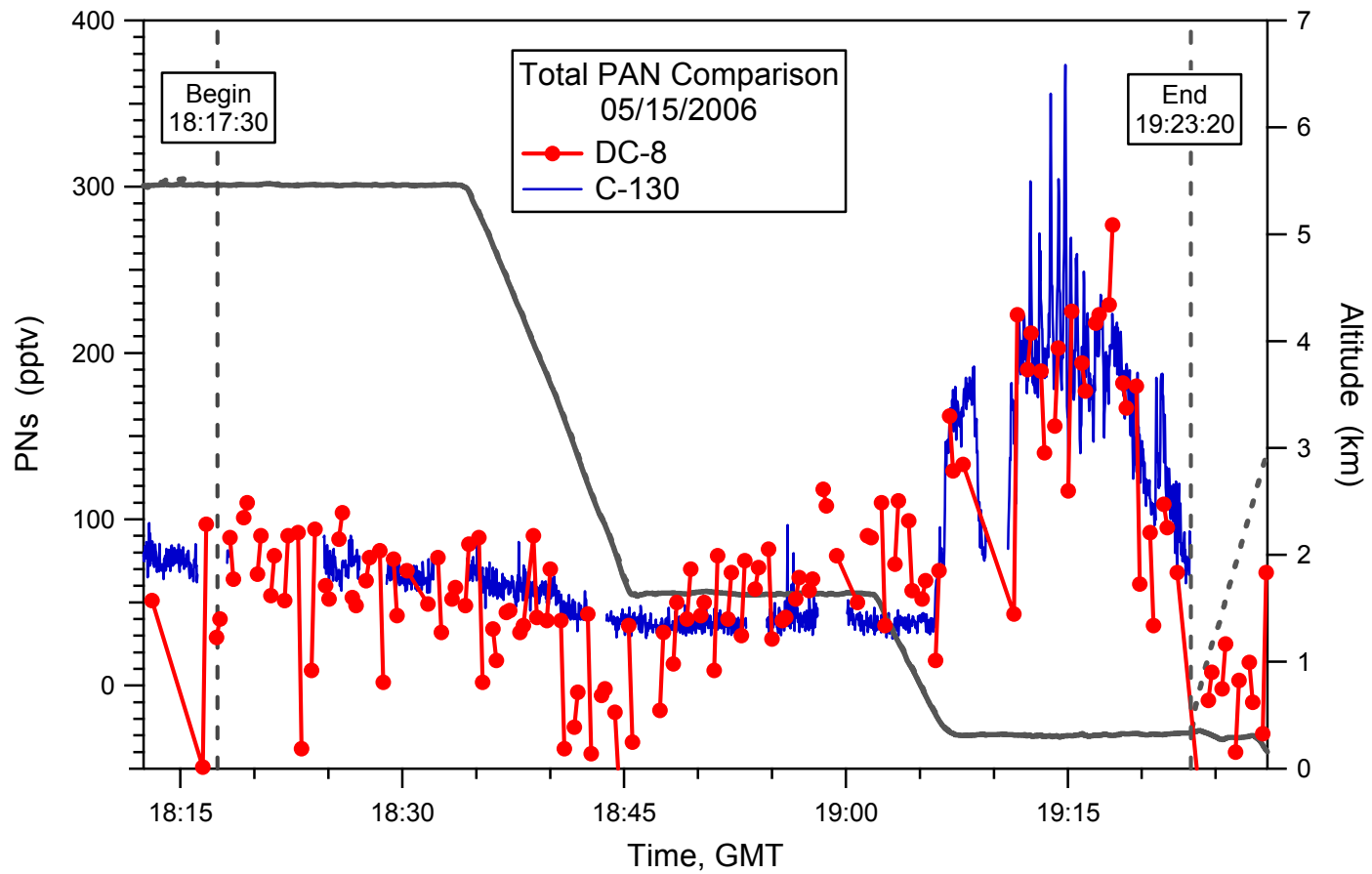


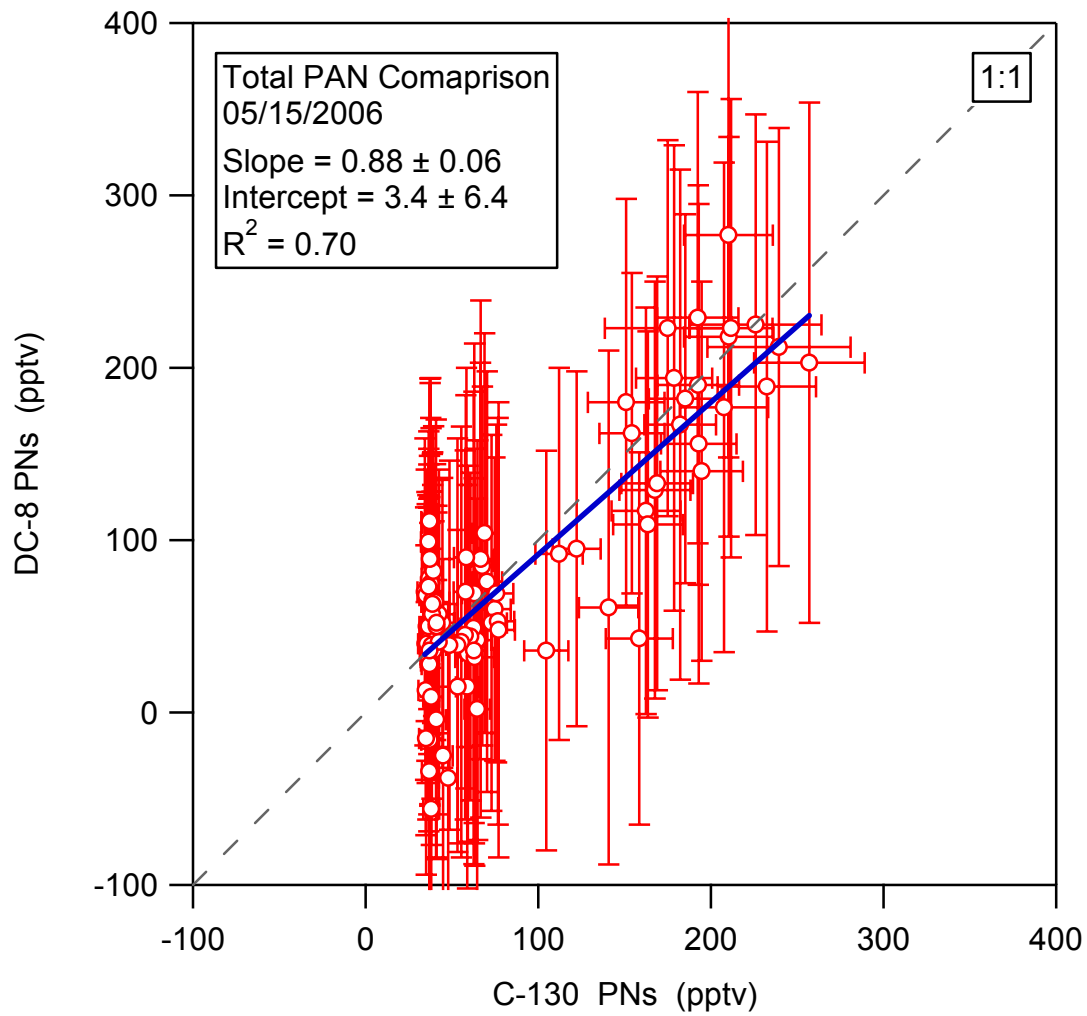


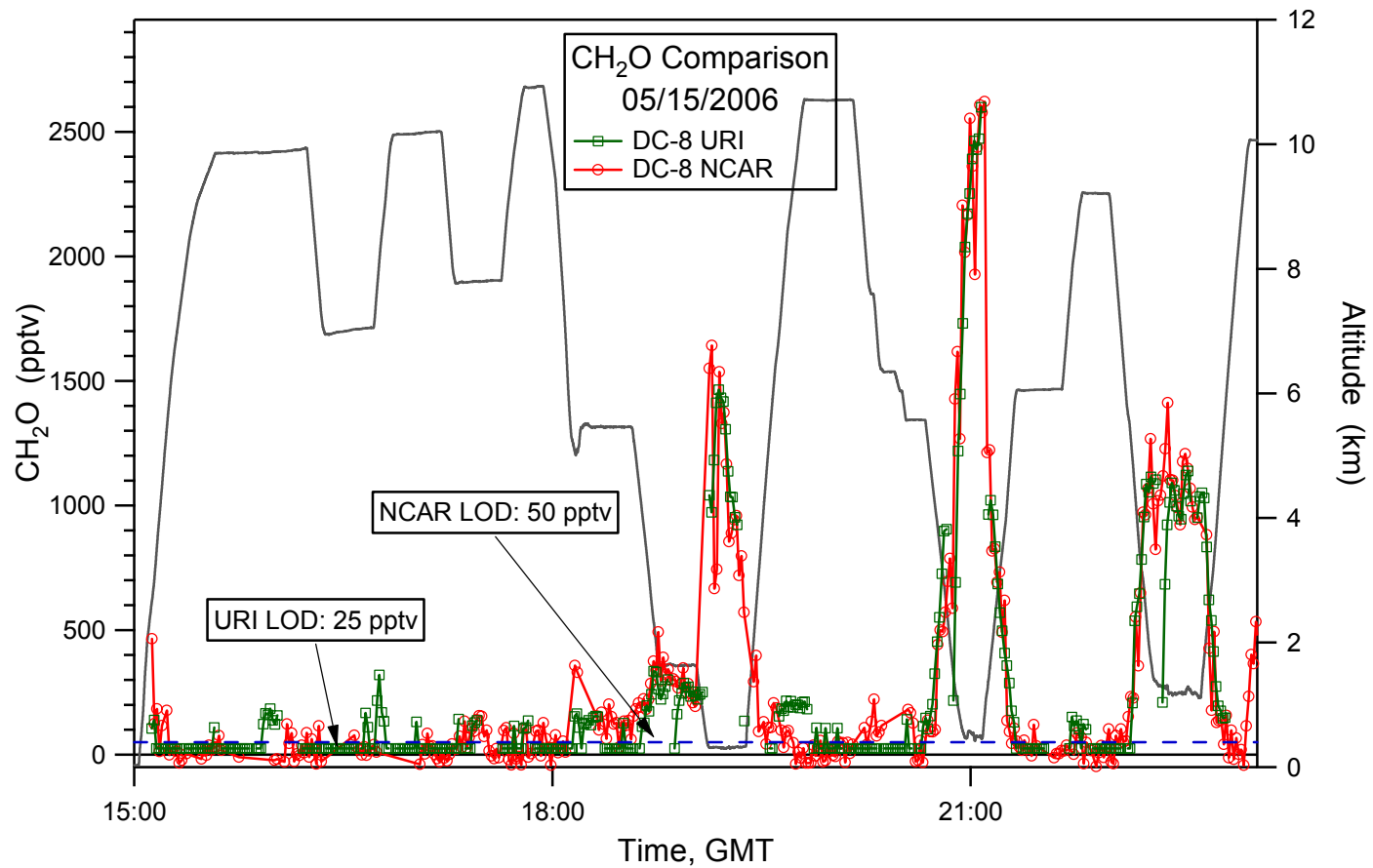




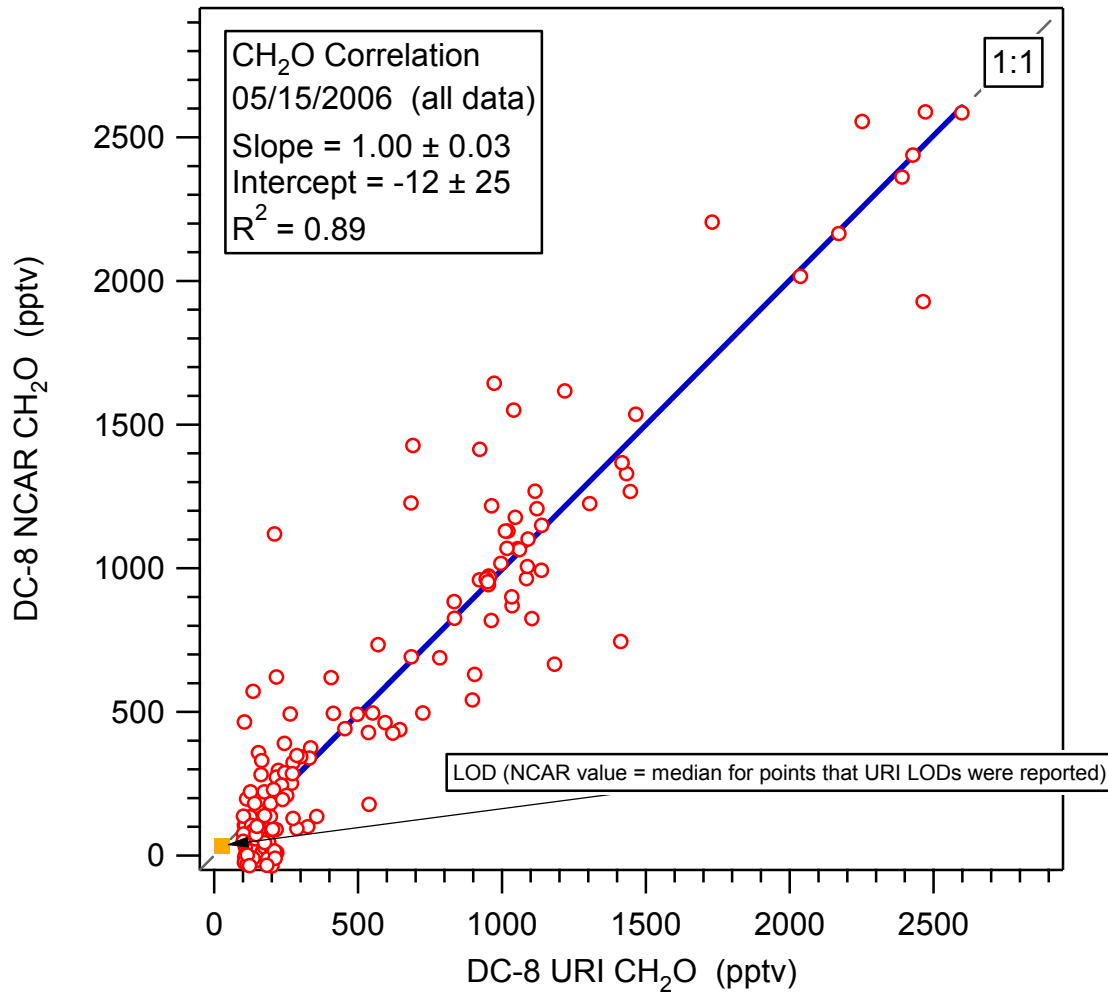
DC-8 PAN data have potential offsets that the PI is attempting to characterize.



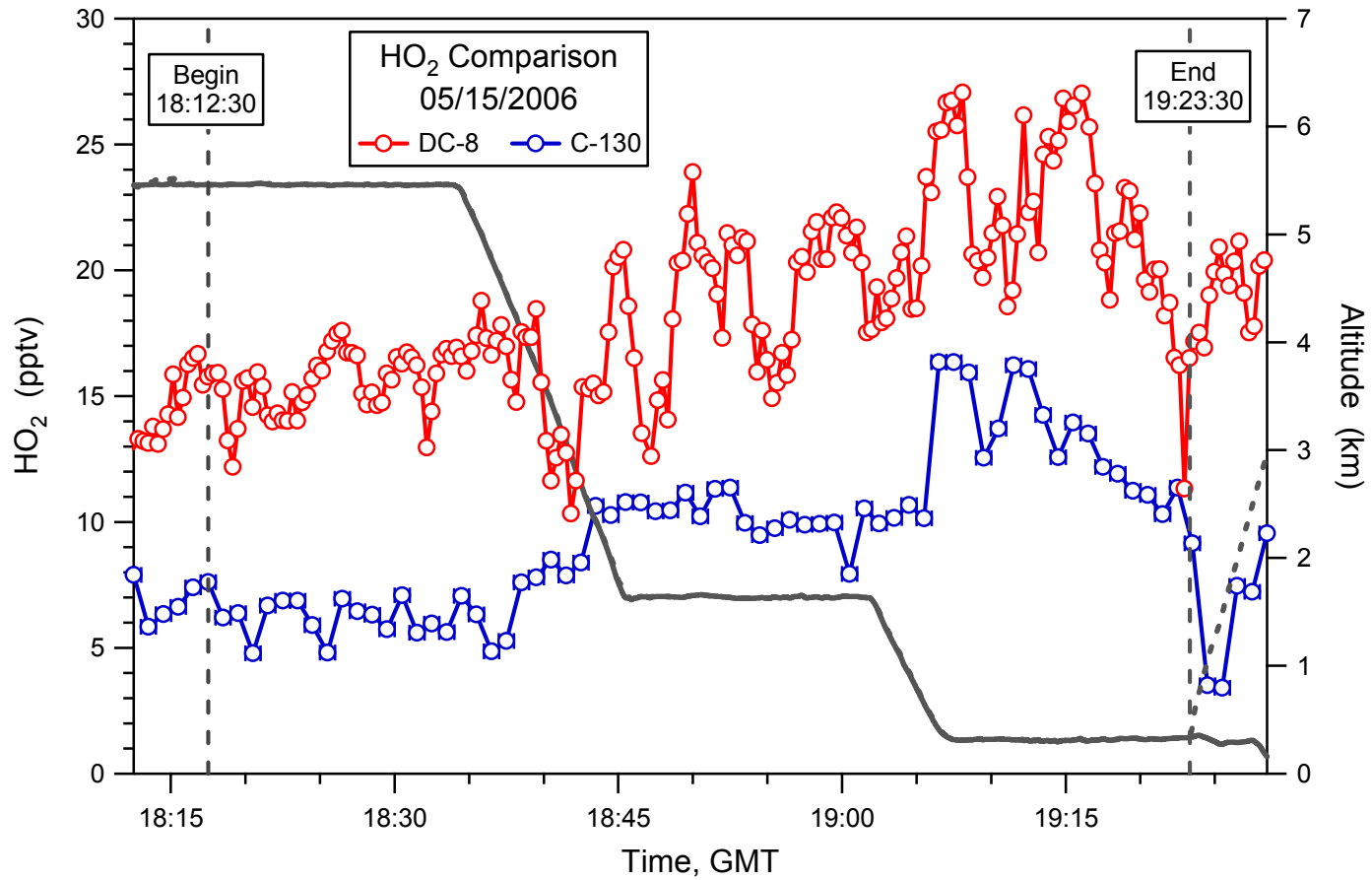


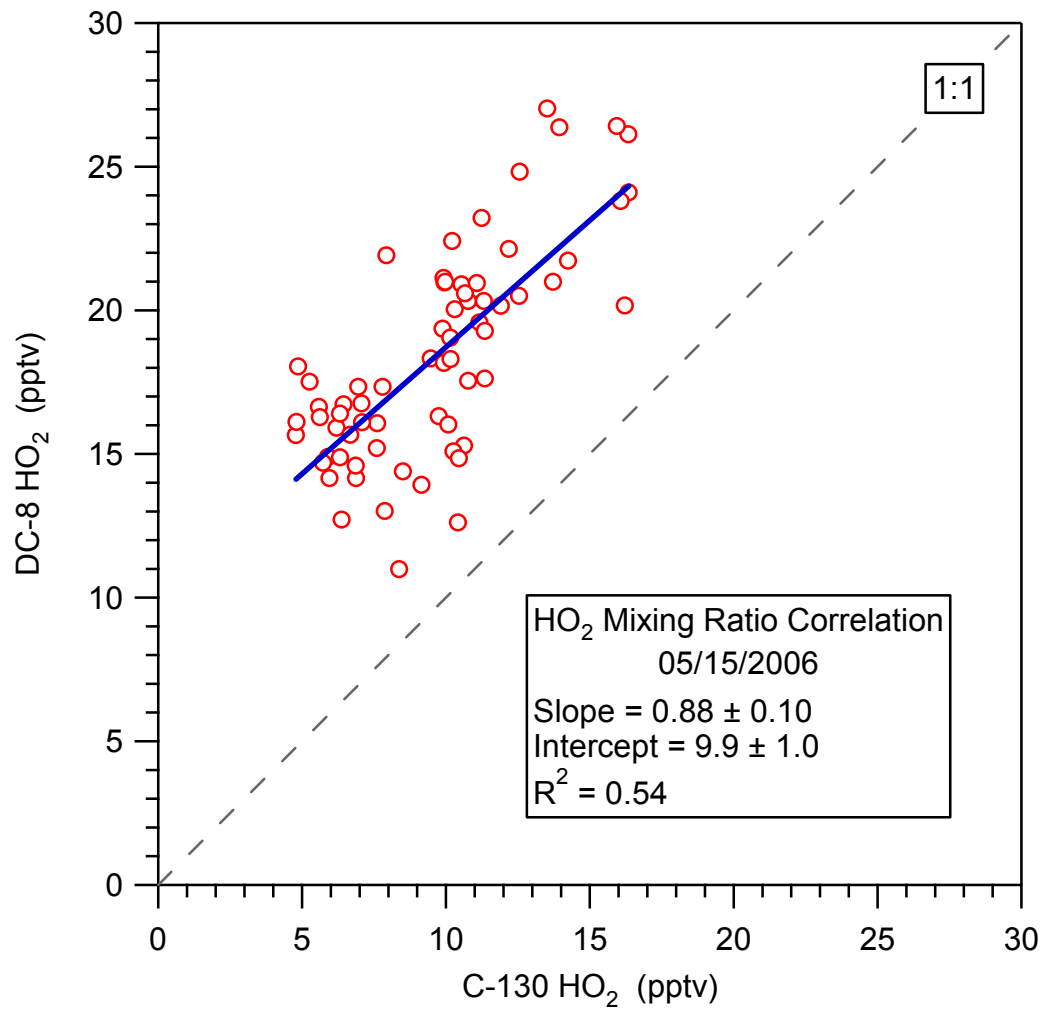


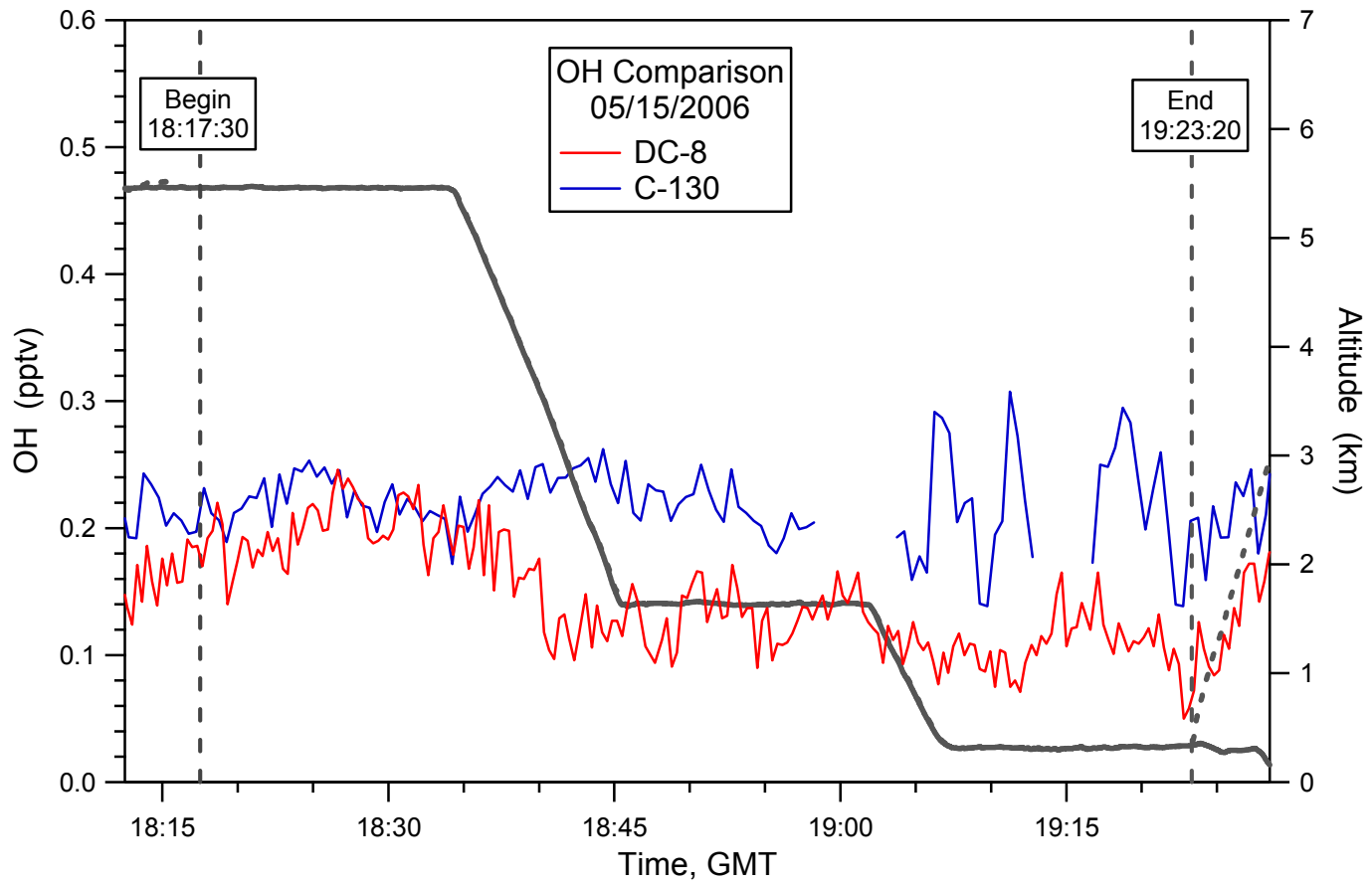
DC-8 data only from the entire 05/15 flight.
C-130 instrument suffered from a computer motherboard crash.

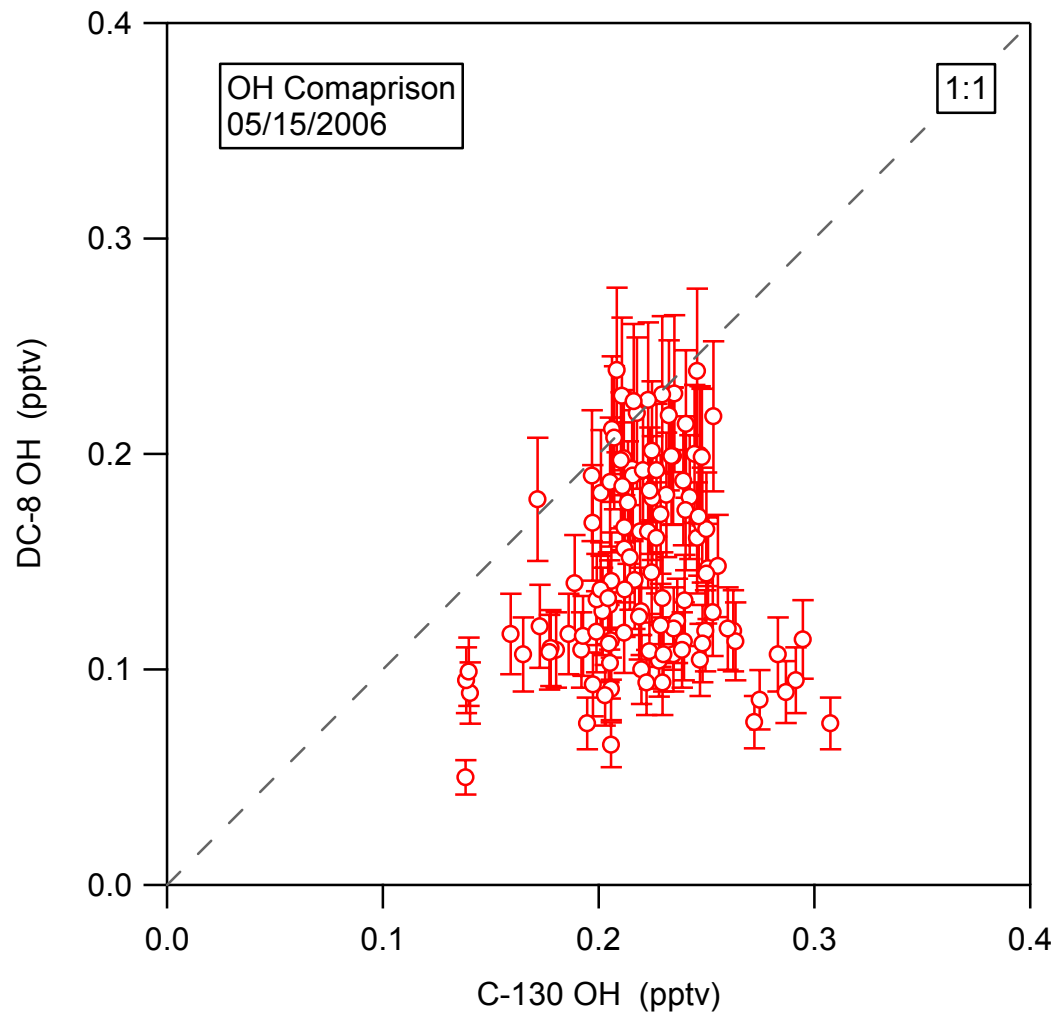


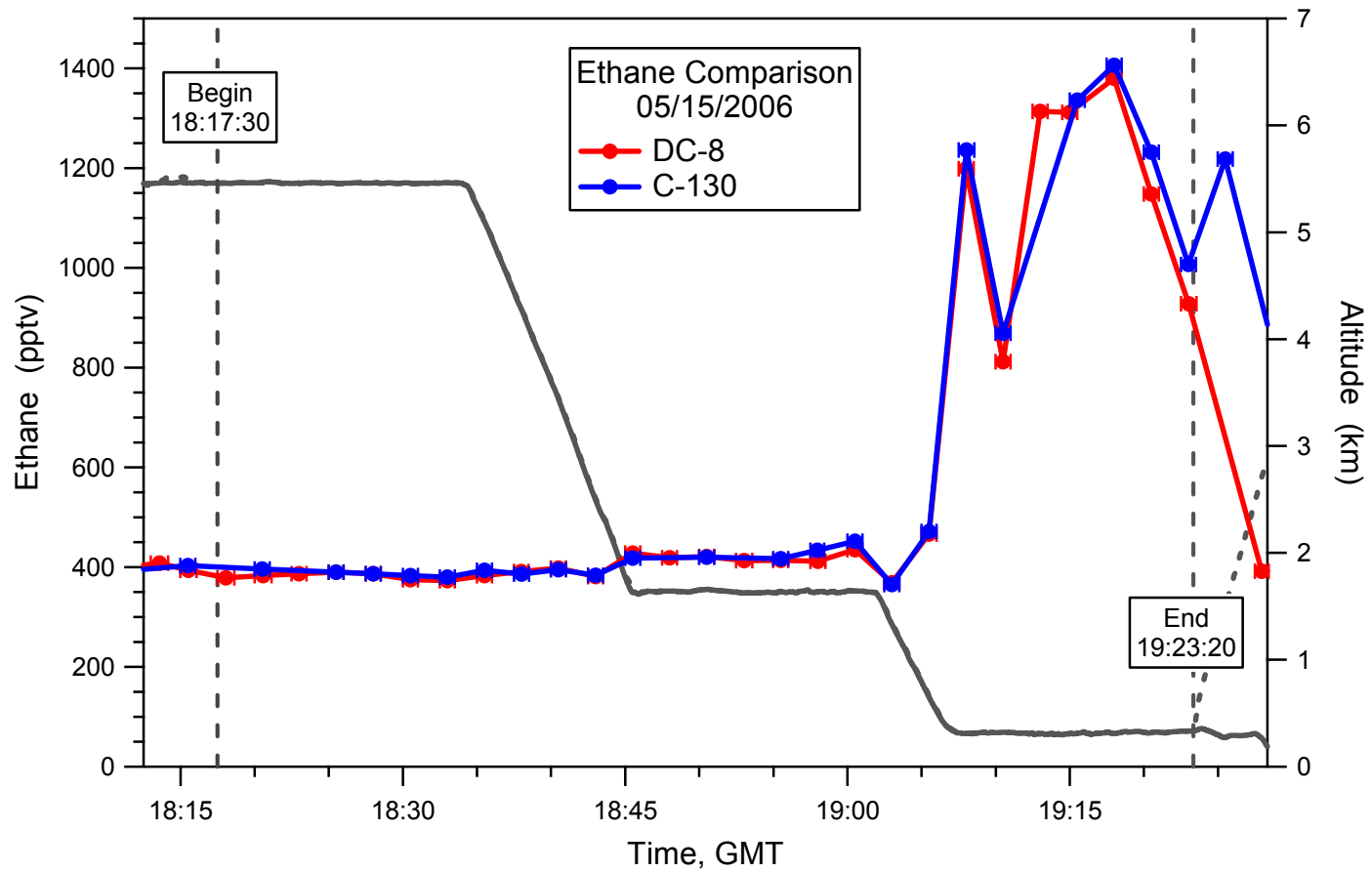
DC-8 data only from the entire 05/15 flight.
C-130 instrument suffered from a computer motherboard crash.

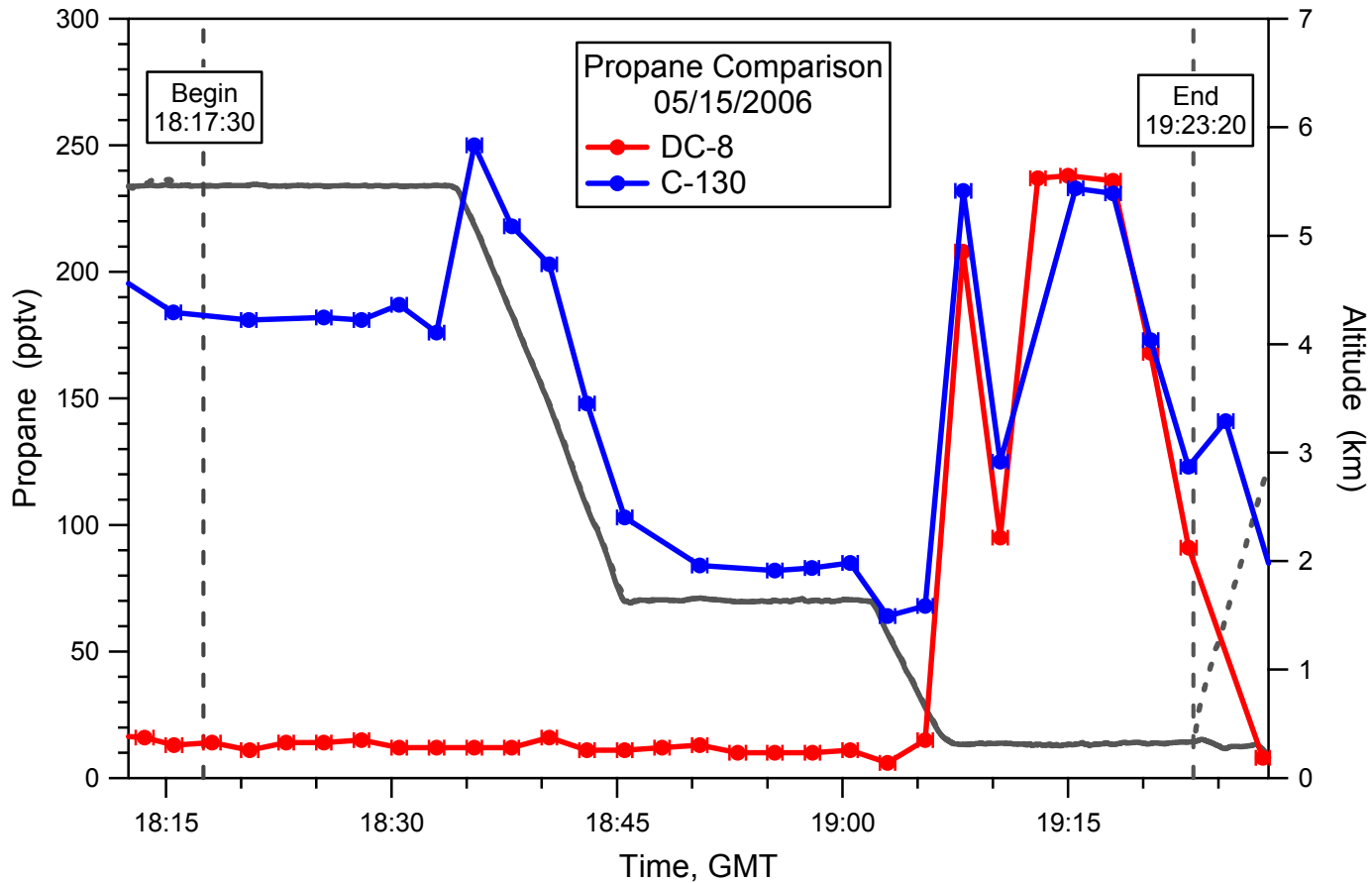












Note: There was a propane cylinder in the UCI rack which contributed to some contaminations no more than a few hundred pptv.

